

## Cerberus Polyclonal Antibody

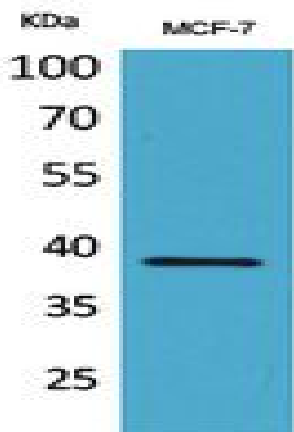
<b>Catalog No :</b>	YT5410
<b>Reactivity :</b>	Human;Rat
<b>Applications :</b>	WB;IHC;IF;ELISA
<b>Target :</b>	Cerberus
<b>Fields :</b>	>>Wnt signaling pathway
<b>Gene Name :</b>	CER1
<b>Protein Name :</b>	Cerberus
<b>Human Gene Id :</b>	9350
<b>Human Swiss Prot No :</b>	O95813
<b>Mouse Gene Id :</b>	12622
<b>Mouse Swiss Prot No :</b>	O55233
<b>Immunogen :</b>	The antiserum was produced against synthesized peptide derived from the Internal region of human CER1. AA range:91-140
<b>Specificity :</b>	Cerberus Polyclonal Antibody detects endogenous levels of Cerberus protein.
<b>Formulation :</b>	Liquid in PBS containing 50% glycerol, 0.5% BSA and 0.02% sodium azide.
<b>Source :</b>	Polyclonal, Rabbit,IgG
<b>Dilution :</b>	WB 1:500 - 1:2000. IHC: 1:100-1:300. ELISA: 1:20000.. IF 1:50-200
<b>Purification :</b>	The antibody was affinity-purified from rabbit antiserum by affinity-chromatography using epitope-specific immunogen.
<b>Concentration :</b>	1 mg/ml

---

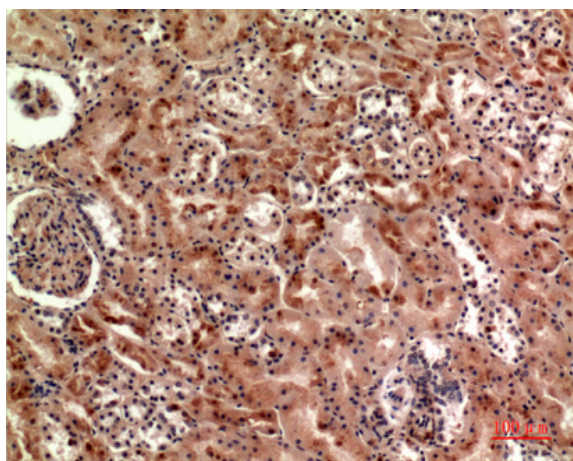
<b>Storage Stability :</b>	-15°C to -25°C/1 year(Do not lower than -25°C)
<b>Observed Band :</b>	30kD
<b>Cell Pathway :</b>	WNT;WNT-T CELL
<b>Background :</b>	This gene encodes a cytokine member of the cysteine knot superfamily, characterized by nine conserved cysteines and a cysteine knot region. The cerberus-related cytokines, together with Dan and DRM/Gremlin, represent a group of bone morphogenetic protein (BMP) antagonists that can bind directly to BMPs and inhibit their activity. [provided by RefSeq, Jul 2008],
<b>Function :</b>	function:Cytokine that may play a role in anterior neural induction and somite formation during embryogenesis in part through a BMP-inhibitory mechanism. Can regulate Nodal signaling during gastrulation as well as the formation and patterning of the primitive streak.,PTM:N-glycosylated.,sequence caution:Translated as Ser.,similarity:Belongs to the DAN family.,similarity:Contains 1 CTCK (C-terminal cystine knot-like) domain.,subunit:Forms monomers and predominantly dimers.,
<b>Subcellular Location :</b>	Secreted .
<b>Expression :</b>	Blood,PCR rescued clones,
<b>Sort :</b>	3863
<b>No4 :</b>	1
<b>Host :</b>	Rabbit
<b>Modifications :</b>	Unmodified

---

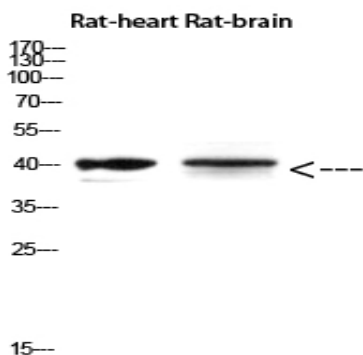
## Products Images



Western Blot analysis of MCF-7 cells using Cerberus Polyclonal Antibody. Antibody was diluted at 1:500. Secondary antibody(catalog#:RS0002) was diluted at 1:20000



Immunohistochemical analysis of paraffin-embedded human-kidney, antibody was diluted at 1:100



Western Blot analysis of Rat-heart Rat-brain using Cerberus Polyclonal Antibody diluted at 1:500. Secondary antibody(catalog#:RS0002) was diluted at 1:20000