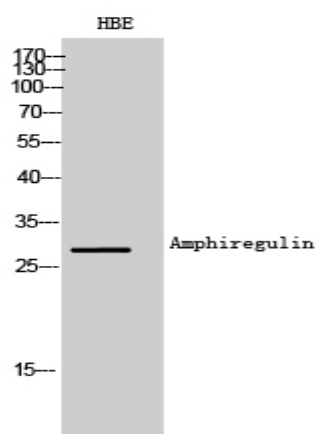


Amphiregulin Polyclonal Antibody

Catalog No :	YT5644
Reactivity :	Human;Rat;Mouse;
Applications :	WB;ELISA
Target :	Amphiregulin
Fields :	>>MAPK signaling pathway;>>ErbB signaling pathway;>>PI3K-Akt signaling pathway;>>Hippo signaling pathway;>>Colorectal cancer
Gene Name :	AREG/AREGB
Protein Name :	Amphiregulin
Human Gene Id :	374/727738
Human Swiss Prot No :	P15514
Mouse Gene Id :	11839
Mouse Swiss Prot No :	P31955
Rat Gene Id :	29183
Rat Swiss Prot No :	P24338
Immunogen :	The antiserum was produced against synthesized peptide derived from the Internal region of human AREG/AREGB. AA range:91-140
Specificity :	Amphiregulin Polyclonal Antibody detects endogenous levels of Amphiregulin protein.
Formulation :	Liquid in PBS containing 50% glycerol, 0.5% BSA and 0.02% sodium azide.
Source :	Polyclonal, Rabbit,IgG
Dilution :	WB 1:500 - 1:2000. ELISA: 1:10000. Not yet tested in other applications.

Purification :	The antibody was affinity-purified from rabbit antiserum by affinity-chromatography using epitope-specific immunogen.
Concentration :	1 mg/ml
Storage Stability :	-15°C to -25°C/1 year(Do not lower than -25°C)
Observed Band :	17kD
Cell Pathway :	ErbB_HER;
Background :	<p>The protein encoded by this gene is a member of the epidermal growth factor family. It is an autocrine growth factor as well as a mitogen for astrocytes, Schwann cells and fibroblasts. It is related to epidermal growth factor (EGF) and transforming growth factor alpha (TGF-alpha). The protein interacts with the EGF/TGF-alpha receptor to promote the growth of normal epithelial cells, and it inhibits the growth of certain aggressive carcinoma cell lines. It also functions in mammary gland, oocyte and bone tissue development. This gene is associated with a psoriasis-like skin phenotype, and is also associated with other pathological disorders, including various types of cancers and inflammatory conditions. [provided by RefSeq, Apr 2014],</p>
Function :	<p>function:Bifunctional growth-modulating glycoprotein. Inhibits growth of several human carcinoma cells in culture and stimulates proliferation of human fibroblasts and certain other tumor cells.,induction:By phorbol 12-myristate 13-acetate (PMA).,miscellaneous:AR is a protein containing cysteines in disulfide linkage(s) that are essential for its biological activity. AR may contain oligosaccharides and/or lipid moieties that are not obligatory for the biological activity.,similarity:Belongs to the amphiregulin family.,similarity:Contains 1 EGF-like domain.,subunit:The immature precursor interacts with CNIH.,</p>
Subcellular Location :	Membrane; Single-pass membrane protein.
Expression :	Brain,Pooled,
Sort :	1956
No4 :	1
Host :	Rabbit
Modifications :	Unmodified

Products Images



Western Blot analysis of HBE cells using Amphiregulin Polyclonal Antibody. Secondary antibody(catalog#:RS0002) was diluted at 1:20000