

CD163b Polyclonal Antibody

Catalog No :	YT5406
Reactivity :	Human
Applications :	WB;IHC;IF;ELISA
Target :	CD163b
Gene Name :	CD163L1
Protein Name :	Scavenger receptor cysteine-rich type 1 protein M160
Human Gene Id :	283316
Human Swiss Prot No :	Q9NR16
Immunogen :	The antiserum was produced against synthesized peptide derived from the Internal region of human CD163L1. AA range:391-440
Specificity :	CD163b Polyclonal Antibody detects endogenous levels of CD163b protein.
Formulation :	Liquid in PBS containing 50% glycerol, 0.5% BSA and 0.02% sodium azide.
Source :	Polyclonal, Rabbit,IgG
Dilution :	WB 1:500 - 1:2000. IHC: 1:100-1:300. ELISA: 1:20000.. IF 1:50-200
Purification :	The antibody was affinity-purified from rabbit antiserum by affinity-chromatography using epitope-specific immunogen.
Concentration :	1 mg/ml
Storage Stability :	-15°C to -25°C/1 year(Do not lower than -25°C)
Observed Band :	160kD
Background :	This gene encodes a member of the scavenger receptor cysteine-rich (SRCR) superfamily. Members of this family are secreted or membrane-anchored proteins

mainly found in cells associated with the immune system. The SRCR family is defined by a 100-110 amino acid SRCR domain, which may mediate protein-protein interaction and ligand binding. The encoded protein contains twelve SRCR domains, a transmembrane region and a cytoplasmic domain. Alternative splicing results in multiple transcript variants encoding different isoforms. [provided by RefSeq, Jul 2014],

Function :

similarity:Contains 12 SRCR domains.,tissue specificity:Isoform 1 is highly expressed in the spleen, lymph nodes, thymus, and fetal liver and weakly expressed in bone marrow and no expression was found in peripheral blood leukocytes. Isoform 1 expression is restricted to the monocyte and macrophage cell lines. Isoform 2 is only expressed in spleen.,

Subcellular Location :

[Isoform 1]: Cell membrane ; Single-pass type I membrane protein .; [Isoform 2]: Cell membrane ; Single-pass type I membrane protein .; [Isoform 3]: Secreted .

Expression :

Isoform 1 is highly expressed in the spleen, lymph nodes, thymus, and fetal liver and weakly expressed in bone marrow and no expression was found in peripheral blood leukocytes. Isoform 1 expression is restricted to the monocyte and macrophage cell lines. Isoform 2 is only expressed in spleen.

Sort :

3417

No4 :

1

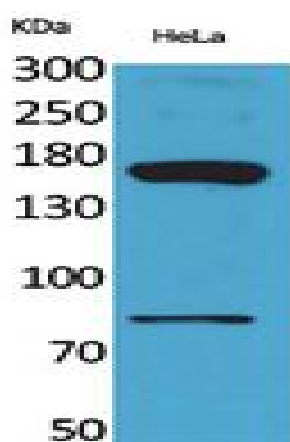
Host :

Rabbit

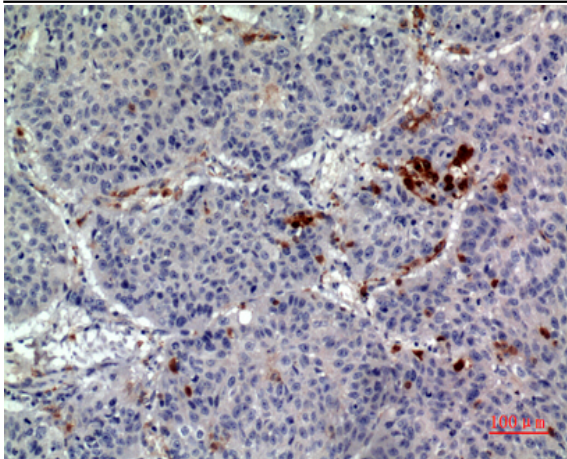
Modifications :

Unmodified

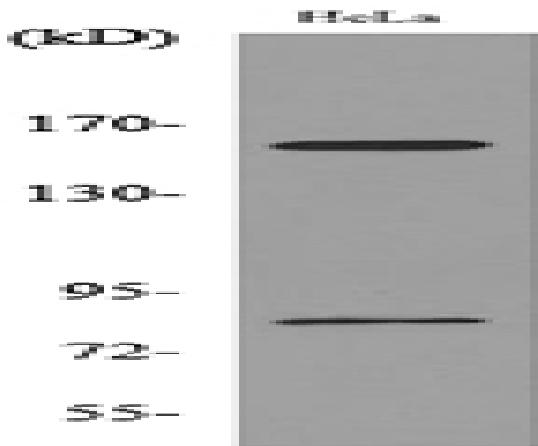
Products Images



Western Blot analysis of HeLa cells using CD163b Polyclonal Antibody. Secondary antibody(catalog#:RS0002) was diluted at 1:20000



Immunohistochemical analysis of paraffin-embedded human-lung, antibody was diluted at 1:100



Western blot analysis of lysate from HeLa cells, using CD163L1 Antibody.