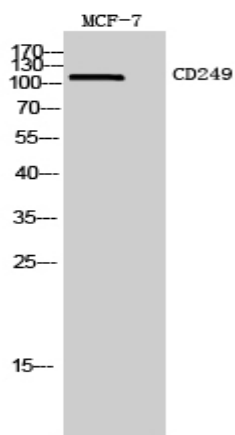


CD249 Polyclonal Antibody

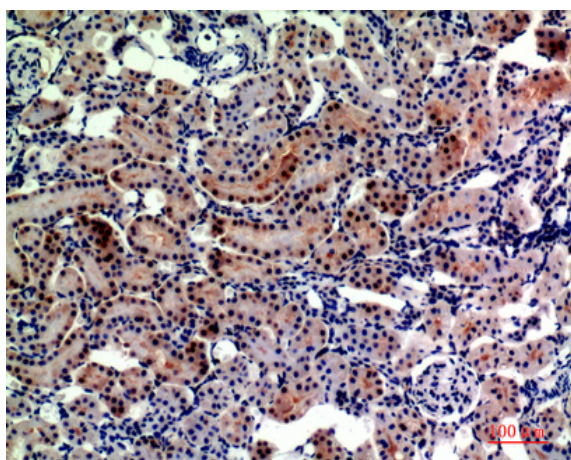
Catalog No :	YT5639
Reactivity :	Human;Mouse;Rat
Applications :	WB;IHC;IF;ELISA
Target :	CD249
Fields :	>>Renin-angiotensin system
Gene Name :	ENPEP
Protein Name :	Glutamyl aminopeptidase
Human Gene Id :	2028
Human Swiss Prot No :	Q07075
Mouse Gene Id :	13809
Mouse Swiss Prot No :	P16406
Rat Gene Id :	64017
Rat Swiss Prot No :	P50123
Immunogen :	The antiserum was produced against synthesized peptide derived from the Internal region of human ENPEP. AA range:671-720
Specificity :	CD249 Polyclonal Antibody detects endogenous levels of CD249 protein.
Formulation :	Liquid in PBS containing 50% glycerol, 0.5% BSA and 0.02% sodium azide.
Source :	Polyclonal, Rabbit,IgG
Dilution :	WB 1:500 - 1:2000. IHC: 1:100-1:300. ELISA: 1:10000.. IF 1:50-200

Purification :	The antibody was affinity-purified from rabbit antiserum by affinity-chromatography using epitope-specific immunogen.
Concentration :	1 mg/ml
Storage Stability :	-15°C to -25°C/1 year(Do not lower than -25°C)
Observed Band :	110kD
Cell Pathway :	Renin-angiotensin system;
Background :	catalytic activity:Release of N-terminal glutamate (and to a lesser extent aspartate) from a peptide.,cofactor:Binds 1 zinc ion per subunit.,function:Appears to have a role in the catabolic pathway of the renin-angiotensin system. Probably plays a role in regulating growth and differentiation of early B-lineage cells.,similarity:Belongs to the peptidase M1 family.,subunit:Homodimer; disulfide-linked.,tissue specificity:Expressed by epithelial cells of the proximal tubule cells and the glomerulus of the nephron. Also found in a variety of other tissues.,
Function :	catalytic activity:Release of N-terminal glutamate (and to a lesser extent aspartate) from a peptide.,cofactor:Binds 1 zinc ion per subunit.,function:Appears to have a role in the catabolic pathway of the renin-angiotensin system. Probably plays a role in regulating growth and differentiation of early B-lineage cells.,similarity:Belongs to the peptidase M1 family.,subunit:Homodimer; disulfide-linked.,tissue specificity:Expressed by epithelial cells of the proximal tubule cells and the glomerulus of the nephron. Also found in a variety of other tissues.,
Subcellular Location :	Cell membrane ; Single-pass type II membrane protein.
Expression :	Expressed in choriocarcinoma cancer cell lines (at protein level) (PubMed:10692253). Expressed by epithelial cells of the proximal tubule cells and the glomerulus of the nephron. Also found in a variety of other tissues.
Tag :	hot
Sort :	3496
No4 :	1
Host :	Rabbit
Modifications :	Unmodified

Products Images



Western Blot analysis of MCF7 cells using CD249 Polyclonal Antibody. Secondary antibody(catalog#:RS0002) was diluted at 1:20000



Immunohistochemical analysis of paraffin-embedded rat-kidney, antibody was diluted at 1:200