

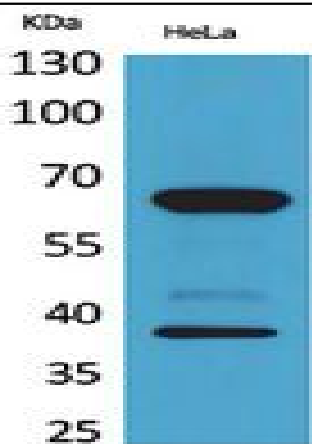
**DNAM-1 Polyclonal Antibody**

<b>Catalog No :</b>	YT5402
<b>Reactivity :</b>	Human;Mouse
<b>Applications :</b>	WB;ELISA
<b>Target :</b>	DNAM-1
<b>Fields :</b>	>>Cell adhesion molecules
<b>Gene Name :</b>	CD226
<b>Protein Name :</b>	CD226 antigen
<b>Human Gene Id :</b>	10666
<b>Human Swiss Prot No :</b>	Q15762
<b>Mouse Gene Id :</b>	225825
<b>Mouse Swiss Prot No :</b>	Q8K4F0
<b>Immunogen :</b>	The antiserum was produced against synthesized peptide derived from the Internal region of human CD226. AA range:71-120
<b>Specificity :</b>	DNAM-1 Polyclonal Antibody detects endogenous levels of DNAM-1 protein.
<b>Formulation :</b>	Liquid in PBS containing 50% glycerol, 0.5% BSA and 0.02% sodium azide.
<b>Source :</b>	Polyclonal, Rabbit,IgG
<b>Dilution :</b>	WB 1:500 - 1:2000. ELISA: 1:20000. Not yet tested in other applications.
<b>Purification :</b>	The antibody was affinity-purified from rabbit antiserum by affinity-chromatography using epitope-specific immunogen.
<b>Concentration :</b>	1 mg/ml

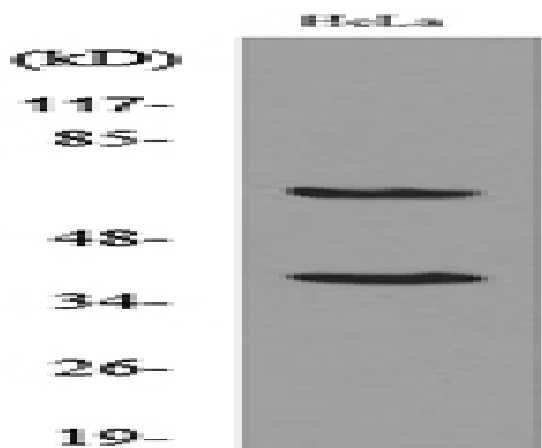
---

<b>Storage Stability :</b>	<u>-15°C to -25°C/1 year(Do not lower than -25°C)</u>
<b>Observed Band :</b>	<u>38kD</u>
<b>Cell Pathway :</b>	<u>Cell adhesion molecules (CAMs);</u>
<b>Background :</b>	<u>This gene encodes a glycoprotein expressed on the surface of NK cells, platelets, monocytes and a subset of T cells. It is a member of the Ig-superfamily containing 2 Ig-like domains of the V-set. The protein mediates cellular adhesion of platelets and megakaryocytic cells to vascular endothelial cells. The protein also plays a role in megakaryocytic cell maturation. Alternative splicing results in multiple transcript variants. [provided by RefSeq, Jan 2015],</u>
<b>Function :</b>	<u>function:Receptor involved in intercellular adhesion, lymphocyte signaling, cytotoxicity and lymphokine secretion mediated by cytotoxic T-lymphocyte (CTL) and NK cell.,PTM:Phosphorylated.,similarity:Contains 2 Ig-like C2-type (immunoglobulin-like) domains.,subunit:Interacts with PVR and PVRL2.,tissue specificity:Expressed by peripheral blood T-lymphocytes.,</u>
<b>Subcellular Location :</b>	<u>Cell membrane ; Single-pass type I membrane protein .</u>
<b>Expression :</b>	<u>Expressed by peripheral blood T-lymphocytes.</u>
<b>Sort :</b>	<u>5192</u>
<b>No4 :</b>	<u>1</u>
<b>Host :</b>	<u>Rabbit</u>
<b>Modifications :</b>	<u>Unmodified</u>

## Products Images



Western Blot analysis of HeLa cells using DNAM-1 Polyclonal Antibody. Secondary antibody(catalog#:RS0002) was diluted at 1:20000



Western blot analysis of lysate from HeLa cells, using CD226 Antibody.