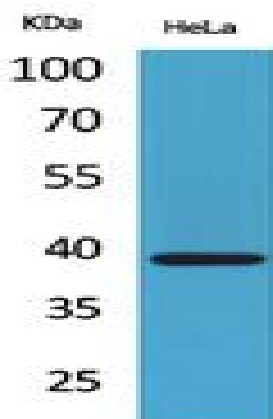


## Bonzo Polyclonal Antibody

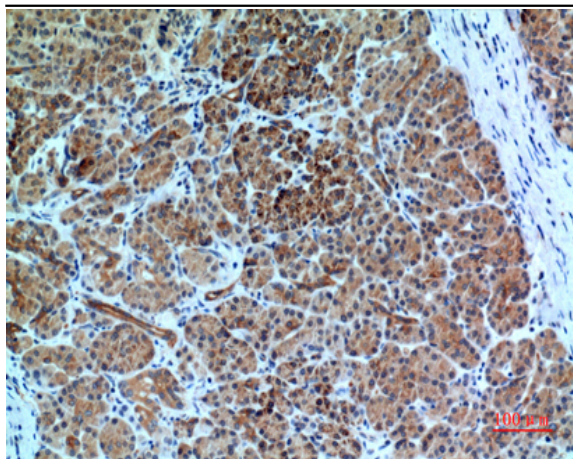
<b>Catalog No :</b>	YT5398
<b>Reactivity :</b>	Human;Mouse
<b>Applications :</b>	WB;IHC;IF;ELISA
<b>Target :</b>	Bonzo
<b>Fields :</b>	>>Cytokine-cytokine receptor interaction;>>Chemokine signaling pathway
<b>Gene Name :</b>	CXCR6
<b>Protein Name :</b>	C-X-C chemokine receptor type 6
<b>Human Gene Id :</b>	10663
<b>Human Swiss Prot No :</b>	O00574
<b>Mouse Gene Id :</b>	80901
<b>Mouse Swiss Prot No :</b>	Q9EQ16
<b>Immunogen :</b>	The antiserum was produced against synthesized peptide derived from the N-terminal region of human CXCR6. AA range:1-50
<b>Specificity :</b>	Bonzo Polyclonal Antibody detects endogenous levels of Bonzo protein.
<b>Formulation :</b>	Liquid in PBS containing 50% glycerol, 0.5% BSA and 0.02% sodium azide.
<b>Source :</b>	Polyclonal, Rabbit,IgG
<b>Dilution :</b>	WB 1:500 - 1:2000. IHC: 1:100-1:300. ELISA: 1:20000.. IF 1:50-200
<b>Purification :</b>	The antibody was affinity-purified from rabbit antiserum by affinity-chromatography using epitope-specific immunogen.
<b>Concentration :</b>	1 mg/ml

<b>Storage Stability :</b>	-15°C to -25°C/1 year(Do not lower than -25°C)
<b>Observed Band :</b>	39kD
<b>Cell Pathway :</b>	Cytokine-cytokine receptor interaction;Chemokine;
<b>Background :</b>	function:Receptor for the C-X-C chemokine CXCL16. Used as a coreceptor by SIVs and by strains of HIV-2 and m-tropic HIV-1.,online information:CXC chemokine receptors entry,similarity:Belongs to the G-protein coupled receptor 1 family.,tissue specificity:Expressed in lymphoid tissues and activated T cells.,
<b>Function :</b>	function:Receptor for the C-X-C chemokine CXCL16. Used as a coreceptor by SIVs and by strains of HIV-2 and m-tropic HIV-1.,online information:CXC chemokine receptors entry,similarity:Belongs to the G-protein coupled receptor 1 family.,tissue specificity:Expressed in lymphoid tissues and activated T cells.,
<b>Subcellular Location :</b>	Cell membrane; Multi-pass membrane protein.
<b>Expression :</b>	Expressed in lymphoid tissues and activated T cells.
<b>Tag :</b>	hot
<b>Sort :</b>	1
<b>No4 :</b>	1
<b>Host :</b>	Rabbit
<b>Modifications :</b>	Unmodified

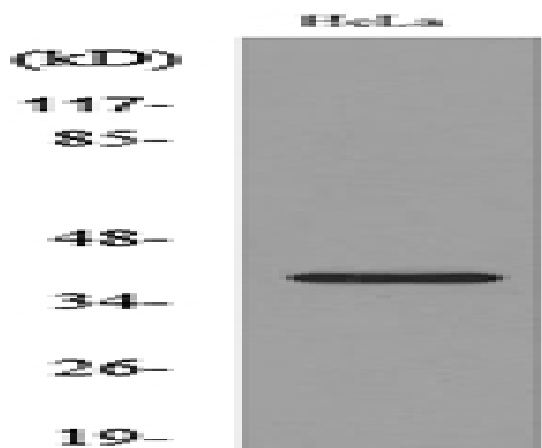
## Products Images



Western Blot analysis of HeLa cells using Bonzo Polyclonal Antibody. Secondary antibody(catalog#:RS0002) was diluted at 1:20000



Immunohistochemical analysis of paraffin-embedded human-pancreas, antibody was diluted at 1:100



Western blot analysis of lysate from HeLa cells, using CXCR6 Antibody.