

Connexin-40 Polyclonal Antibody

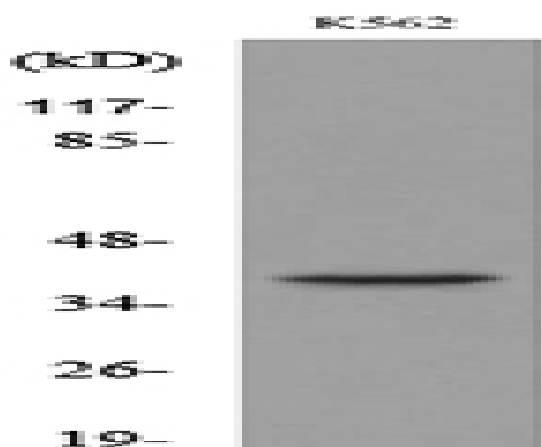
Catalog No :	YT5377
Reactivity :	Human;Mouse;Rat
Applications :	WB;ELISA
Target :	Connexin-40
Gene Name :	GJA5
Protein Name :	Gap junction alpha-5 protein
Human Gene Id :	2702
Human Swiss Prot No :	P36382
Mouse Gene Id :	14613
Mouse Swiss Prot No :	Q01231
Rat Gene Id :	50563
Rat Swiss Prot No :	P28234
Immunogen :	The antiserum was produced against synthesized peptide derived from the N-terminal region of human GJA5. AA range:21-70
Specificity :	Connexin-40 Polyclonal Antibody detects endogenous levels of Connexin-40 protein.
Formulation :	Liquid in PBS containing 50% glycerol, 0.5% BSA and 0.02% sodium azide.
Source :	Polyclonal, Rabbit,IgG
Dilution :	WB 1:500 - 1:2000. ELISA: 1:20000. Not yet tested in other applications.
Purification :	The antibody was affinity-purified from rabbit antiserum by affinity-chromatography using epitope-specific immunogen.

Concentration :	1 mg/ml
Storage Stability :	-15°C to -25°C/1 year(Do not lower than -25°C)
Observed Band :	39kD
Background :	This gene is a member of the connexin gene family. The encoded protein is a component of gap junctions, which are composed of arrays of intercellular channels that provide a route for the diffusion of low molecular weight materials from cell to cell. Mutations in this gene may be associated with atrial fibrillation. Alternatively spliced transcript variants encoding the same isoform have been described. [provided by RefSeq, Jul 2008],
Function :	disease:Defects in GJA5 are a cause of idiopathic atrial fibrillation [MIM:108770]. Atrial fibrillation (AF) is the most common cardiac arrhythmia and is characterized by rapid and irregular activation of the atrium.,function:One gap junction consists of a cluster of closely packed pairs of transmembrane channels, the connexons, through which materials of low MW diffuse from one cell to a neighboring cell.,similarity:Belongs to the connexin family. Alpha-type (group II) subfamily.,subunit:A connexon is composed of a hexamer of connexins.,
Subcellular Location :	Cell membrane; Multi-pass membrane protein. Cell junction, gap junction.
Expression :	Placenta,
Sort :	4428
No4 :	1
Host :	Rabbit
Modifications :	Unmodified

Products Images



Western Blot analysis of K562 cells using Connexin-40 Polyclonal Antibody. Secondary antibody(catalog#:RS0002) was diluted at 1:20000



Western blot analysis of lysate from K562 cells, using GJA5 Antibody.