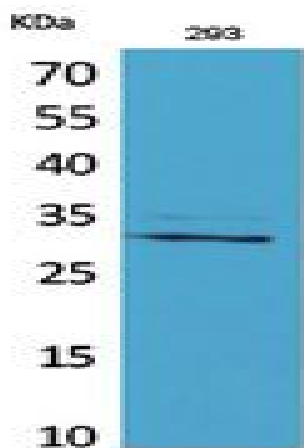


**CGREF1 Polyclonal Antibody**

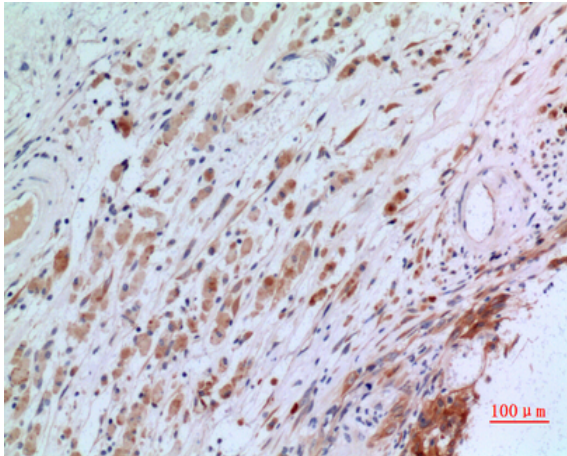
<b>Catalog No :</b>	YT5376
<b>Reactivity :</b>	Human;Rat;Mouse;
<b>Applications :</b>	WB;IHC;IF;ELISA
<b>Target :</b>	CGREF1
<b>Gene Name :</b>	CGREF1
<b>Protein Name :</b>	Cell growth regulator with EF hand domain protein 1
<b>Human Gene Id :</b>	10669
<b>Human Swiss Prot No :</b>	Q99674
<b>Mouse Swiss Prot No :</b>	Q8R1U2
<b>Immunogen :</b>	The antiserum was produced against synthesized peptide derived from the N-terminal region of human CGREF1. AA range:1-50
<b>Specificity :</b>	CGREF1 Polyclonal Antibody detects endogenous levels of CGREF1 protein.
<b>Formulation :</b>	Liquid in PBS containing 50% glycerol, 0.5% BSA and 0.02% sodium azide.
<b>Source :</b>	Polyclonal, Rabbit,IgG
<b>Dilution :</b>	WB 1:500 - 1:2000. IHC: 1:100-1:300. ELISA: 1:20000.. IF 1:50-200
<b>Purification :</b>	The antibody was affinity-purified from rabbit antiserum by affinity-chromatography using epitope-specific immunogen.
<b>Concentration :</b>	1 mg/ml
<b>Storage Stability :</b>	-15°C to -25°C/1 year(Do not lower than -25°C)
<b>Observed Band :</b>	32kD

<b>Background :</b>	caution:The sequence shown here is derived from an Ensembl automatic analysis pipeline and should be considered as preliminary data.,function:Able to inhibit growth in several cell lines.,induction:By p53.,similarity:Contains 2 EF-hand domains.,
<b>Function :</b>	caution:The sequence shown here is derived from an Ensembl automatic analysis pipeline and should be considered as preliminary data.,function:Able to inhibit growth in several cell lines.,induction:By p53.,similarity:Contains 2 EF-hand domains.,
<b>Subcellular Location :</b>	Secreted .
<b>Expression :</b>	Brain,Fetal brain,Testis,Thalamus,
<b>Sort :</b>	3920
<b>No4 :</b>	1
<b>Host :</b>	Rabbit
<b>Modifications :</b>	Unmodified

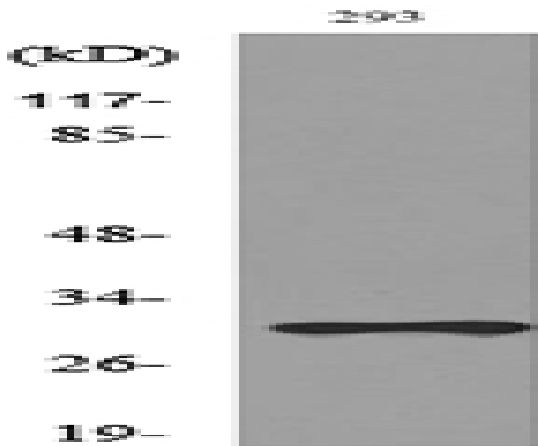
## Products Images



Western Blot analysis of 293 cells using CGREF1 Polyclonal Antibody. Secondary antibody(catalog#:RS0002) was diluted at 1:20000



Immunohistochemical analysis of paraffin-embedded human-brain, antibody was diluted at 1:100



Western blot analysis of lysate from 293 cells, using CGREF1 Antibody.