

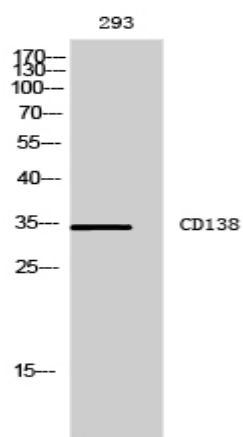
## CD138 Polyclonal Antibody

<b>Catalog No :</b>	YT5610
<b>Reactivity :</b>	Human;Rat;Mouse;
<b>Applications :</b>	WB;IHC;IF;ELISA
<b>Target :</b>	CD138
<b>Fields :</b>	>>ECM-receptor interaction;>>Cell adhesion molecules;>>Malaria;>>Proteoglycans in cancer;>>Fluid shear stress and atherosclerosis
<b>Gene Name :</b>	SDC1
<b>Protein Name :</b>	Syndecan-1
<b>Human Gene Id :</b>	6382
<b>Human Swiss Prot No :</b>	P18827
<b>Mouse Swiss Prot No :</b>	P18828
<b>Immunogen :</b>	The antiserum was produced against synthesized peptide derived from the Internal region of human SDC1. AA range:191-240
<b>Specificity :</b>	CD138 Polyclonal Antibody detects endogenous levels of CD138 protein.
<b>Formulation :</b>	Liquid in PBS containing 50% glycerol, 0.5% BSA and 0.02% sodium azide.
<b>Source :</b>	Polyclonal, Rabbit,IgG
<b>Dilution :</b>	WB 1:500 - 1:2000. IHC: 1:100-1:300. ELISA: 1:10000.. IF 1:50-200
<b>Purification :</b>	The antibody was affinity-purified from rabbit antiserum by affinity-chromatography using epitope-specific immunogen.
<b>Concentration :</b>	1 mg/ml

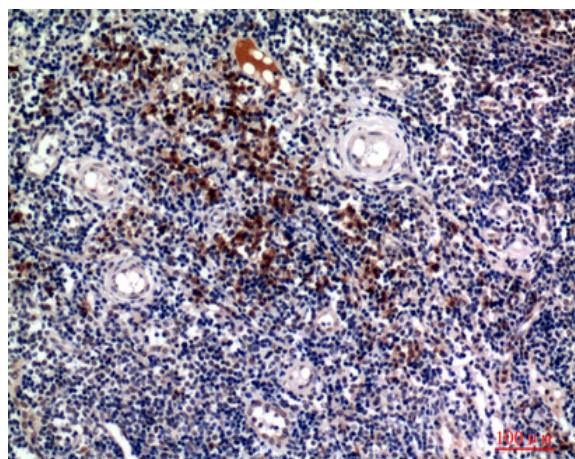
---

<b>Storage Stability :</b>	<u>-15°C to -25°C/1 year(Do not lower than -25°C)</u>
<b>Observed Band :</b>	<u>34kD</u>
<b>Cell Pathway :</b>	<u>ECM-receptor interaction;Cell adhesion molecules (CAMs);</u>
<b>Background :</b>	<p>The protein encoded by this gene is a transmembrane (type I) heparan sulfate proteoglycan and is a member of the syndecan proteoglycan family. The syndecans mediate cell binding, cell signaling, and cytoskeletal organization and syndecan receptors are required for internalization of the HIV-1 tat protein. The syndecan-1 protein functions as an integral membrane protein and participates in cell proliferation, cell migration and cell-matrix interactions via its receptor for extracellular matrix proteins. Altered syndecan-1 expression has been detected in several different tumor types. While several transcript variants may exist for this gene, the full-length natures of only two have been described to date. These two represent the major variants of this gene and encode the same protein. [provided by RefSeq, Jul 2008],</p>
<b>Function :</b>	<p>function:Cell surface proteoglycan that bears both heparan sulfate and chondroitin sulfate and that links the cytoskeleton to the interstitial matrix.,similarity:Belongs to the syndecan proteoglycan family.,subunit:Interacts with CDCP1.,</p>
<b>Subcellular Location :</b>	<p>Membrane ; Single-pass type I membrane protein . Secreted . Secreted, extracellular exosome . Shedding of the ectodomain produces a soluble form. .</p>
<b>Expression :</b>	<u>Dermoid cancer,Fibroblast,Kidney,Mammary gland,Placenta,</u>
<b>Tag :</b>	<u>hot</u>
<b>Sort :</b>	<u>1</u>
<b>No4 :</b>	<u>1</u>
<b>Host :</b>	<u>Rabbit</u>
<b>Modifications :</b>	<u>Unmodified</u>

## Products Images



Western Blot analysis of 293 cells using CD138 Polyclonal Antibody. Secondary antibody(catalog#:RS0002) was diluted at 1:20000



Immunohistochemical analysis of paraffin-embedded human-tonsils, antibody was diluted at 1:100