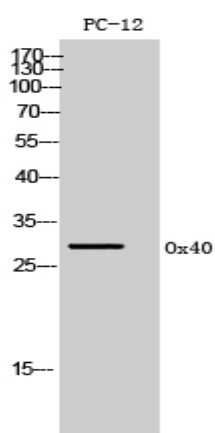


Ox40 Polyclonal Antibody

Catalog No :	YT5607
Reactivity :	Human;Rat;Mouse;
Applications :	WB;ELISA
Target :	Ox40
Fields :	>>Cytokine-cytokine receptor interaction
Gene Name :	TNFRSF4
Protein Name :	Tumor necrosis factor receptor superfamily member 4
Human Gene Id :	7293
Human Swiss Prot No :	P43489
Mouse Swiss Prot No :	P47741
Immunogen :	The antiserum was produced against synthesized peptide derived from the Internal region of human TNFRSF4. AA range:131-180
Specificity :	Ox40 Polyclonal Antibody detects endogenous levels of Ox40 protein.
Formulation :	Liquid in PBS containing 50% glycerol, 0.5% BSA and 0.02% sodium azide.
Source :	Polyclonal, Rabbit,IgG
Dilution :	WB 1:500 - 1:2000. ELISA: 1:10000. Not yet tested in other applications.
Purification :	The antibody was affinity-purified from rabbit antiserum by affinity-chromatography using epitope-specific immunogen.
Concentration :	1 mg/ml
Storage Stability :	-15°C to -25°C/1 year(Do not lower than -25°C)

Observed Band :	30kD
Cell Pathway :	Cytokine-cytokine receptor interaction;
Background :	The protein encoded by this gene is a member of the TNF-receptor superfamily. This receptor has been shown to activate NF-kappaB through its interaction with adaptor proteins TRAF2 and TRAF5. Knockout studies in mice suggested that this receptor promotes the expression of apoptosis inhibitors BCL2 and BCL2L1/BCL2-XL, and thus suppresses apoptosis. The knockout studies also suggested the roles of this receptor in CD4+ T cell response, as well as in T cell-dependent B cell proliferation and differentiation. [provided by RefSeq, Jul 2008],
Function :	function:Receptor for TNFSF4/OX40L/GP34.,similarity:Contains 4 TNFR-Cys repeats.,subunit:Interacts with TRAF2, TRAF3 and TRAF5.,
Subcellular Location :	Membrane; Single-pass type I membrane protein.
Expression :	Brain,
Sort :	11340
No4 :	1
Host :	Rabbit
Modifications :	Unmodified

Products Images



Western Blot analysis of PC12 cells using Ox40 Polyclonal Antibody. Secondary antibody(catalog#:RS0002) was diluted at 1:20000