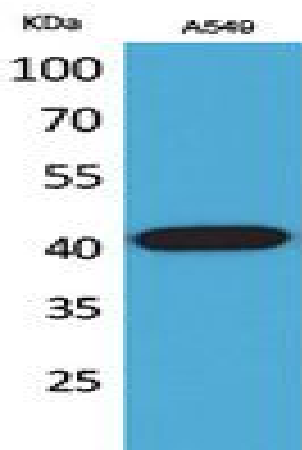


L-Selectin Polyclonal Antibody

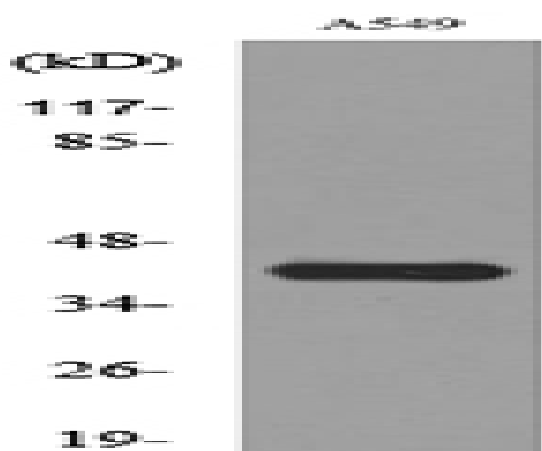
Catalog No :	YT5370
Reactivity :	Human;Mouse;Rat
Applications :	WB;ELISA;IHC
Target :	L-Selectin
Fields :	>>Cell adhesion molecules
Gene Name :	SELL
Protein Name :	L-selectin
Human Gene Id :	6402
Human Swiss Prot No :	P14151
Mouse Gene Id :	20343
Mouse Swiss Prot No :	P18337
Rat Swiss Prot No :	P30836
Immunogen :	The antiserum was produced against synthesized peptide derived from the Internal region of human SELL. AA range:91-140
Specificity :	L-Selectin Polyclonal Antibody detects endogenous levels of L-Selectin protein.
Formulation :	Liquid in PBS containing 50% glycerol, 0.5% BSA and 0.02% sodium azide.
Source :	Polyclonal, Rabbit,IgG
Dilution :	WB 1:500-2000;IHC 1:50-300; ELISA 2000-20000
Purification :	The antibody was affinity-purified from rabbit antiserum by affinity-chromatography using epitope-specific immunogen.

Concentration :	1 mg/ml
Storage Stability :	-15°C to -25°C/1 year(Do not lower than -25°C)
Observed Band :	42kD
Cell Pathway :	Cell adhesion molecules (CAMs);
Background :	<p>This gene encodes a cell surface adhesion molecule that belongs to a family of adhesion/homing receptors. The encoded protein contains a C-type lectin-like domain, a calcium-binding epidermal growth factor-like domain, and two short complement-like repeats. The gene product is required for binding and subsequent rolling of leucocytes on endothelial cells, facilitating their migration into secondary lymphoid organs and inflammation sites. Single-nucleotide polymorphisms in this gene have been associated with various diseases including immunoglobulin A nephropathy. Alternatively spliced transcript variants have been found for this gene. [provided by RefSeq, Oct 2009],</p>
Function :	<p>function:Cell surface adhesion protein. Mediates the adherence of lymphocytes to endothelial cells of high endothelial venules in peripheral lymph nodes. Promotes initial tethering and rolling of leukocytes in endothelia.,online information:L-selectin,similarity:Belongs to the selectin/LECAM family.,similarity:Contains 1 C-type lectin domain.,similarity:Contains 1 EGF-like domain.,similarity:Contains 2 Sushi (CCP/SCR) domains.,subunit:Interaction with PSGL1/SELPLG is required for promoting recruitment and rolling of leukocytes. This interaction is dependent on the sialyl Lewis X glycan and tyrosine sulfation modifications of PSGL1. Sulfation on Y-51 of PSGL1 is important for L-selectin binding.,tissue specificity:Expressed in B cell lines and T lymphocytes.,</p>
Subcellular Location :	Cell membrane ; Single-pass type I membrane protein .
Expression :	Expressed in B-cell lines and T-lymphocytes.
Tag :	hot
Sort :	9269
No4 :	1
Host :	Rabbit
Modifications :	Unmodified

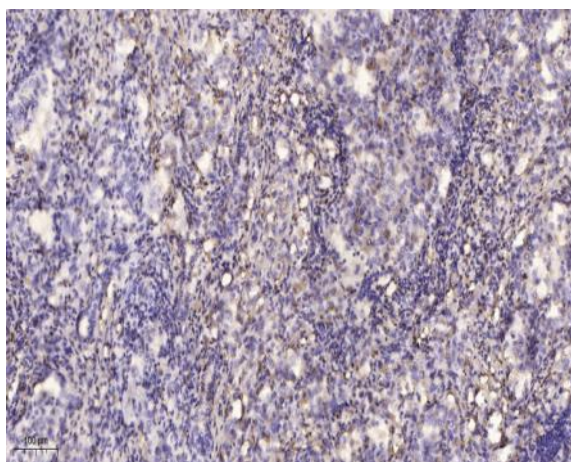
Products Images



Western Blot analysis of A549 cells using L-Selectin Polyclonal Antibody. Secondary antibody(catalog#:RS0002) was diluted at 1:20000



Western blot analysis of lysate from A549 cells, using SELL Antibody.



Immunohistochemical analysis of paraffin-embedded human lung cancer. 1, Antibody was diluted at 1:200(4° overnight). 2, Tris-EDTA,pH9.0 was used for antigen retrieval. 3,Secondary antibody was diluted at 1:200(room temperature, 45min).