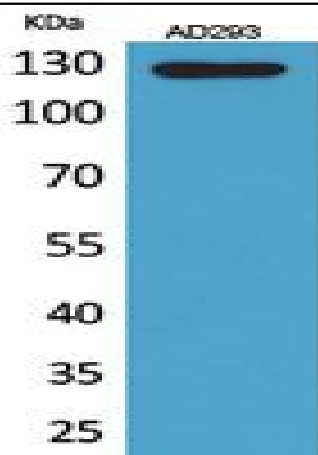


## Arg Polyclonal Antibody

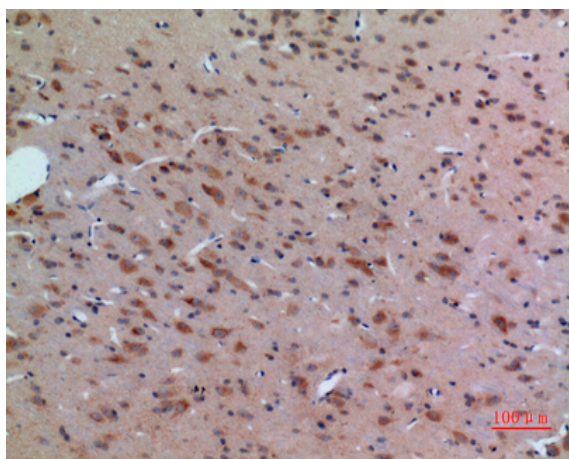
|                              |  |
|------------------------------|--|
| <b>Catalog No :</b>          | YT5358   |
| <b>Reactivity :</b>          | Human;Mouse;Rat  |
| <b>Applications :</b>        | WB;IHC;IF;ELISA  |
| <b>Target :</b>              | Arg  |
| <b>Fields :</b>              | >>ErbB signaling pathway;>>Ras signaling pathway;>>Chemical carcinogenesis - reactive oxygen species;>>Viral myocarditis |
| <b>Gene Name :</b>           | ABL2   |
| <b>Protein Name :</b>        | Abelson tyrosine-protein kinase 2  |
| <b>Human Gene Id :</b>       | 27   |
| <b>Human Swiss Prot No :</b> | P42684   |
| <b>Mouse Swiss Prot No :</b> | Q4JIM5   |
| <b>Immunogen :</b>           | The antiserum was produced against synthesized peptide derived from the Internal region of human ABL2. AA range:601-650  |
| <b>Specificity :</b>         | Arg Polyclonal Antibody detects endogenous levels of Arg protein.  |
| <b>Formulation :</b>         | Liquid in PBS containing 50% glycerol, 0.5% BSA and 0.02% sodium azide.  |
| <b>Source :</b>              | Polyclonal, Rabbit,IgG   |
| <b>Dilution :</b>            | WB 1:500 - 1:2000. IHC: 1:100-1:300. ELISA: 1:20000.. IF 1:50-200  |
| <b>Purification :</b>        | The antibody was affinity-purified from rabbit antiserum by affinity-chromatography using epitope-specific immunogen.    |
| <b>Concentration :</b>       | 1 mg/ml  |
| <b>Storage Stability :</b>   | -15°C to -25°C/1 year(Do not lower than -25°C)   |

|                               |   |
|-------------------------------|---|
| <b>Observed Band :</b>        | 130kD   |
| <b>Cell Pathway :</b>         | ErbB_HER;Viral myocarditis;   |
| <b>Background :</b>           | <p>This gene encodes a member of the Abelson family of nonreceptor tyrosine protein kinases. The protein is highly similar to the c-abl oncogene 1 protein, including the tyrosine kinase, SH2 and SH3 domains, and it plays a role in cytoskeletal rearrangements through its C-terminal F-actin- and microtubule-binding sequences. This gene is expressed in both normal and tumor cells, and is involved in translocation with the ets variant 6 gene in leukemia. Multiple alternatively spliced transcript variants encoding different protein isoforms have been found for this gene. [provided by RefSeq, Nov 2009],</p>  |
| <b>Function :</b>             | <p>catalytic activity:ATP + a [protein]-L-tyrosine = ADP + a [protein]-L-tyrosine phosphate.,caution:The sequence shown here is derived from an Ensembl automatic analysis pipeline and should be considered as preliminary data.,cofactor:Magnesium or manganese.,enzyme regulation:Stabilized in the inactive form by an association between the SH3 domain and the SH2-TK linker region, interactions of the amino-terminal cap, and contributions from an amino-terminal myristoyl group and phospholipids. Activated by autophosphorylation as well as by SRC-family kinase-mediated phosphorylation. Activated by RIN1 binding to the SH2 and SH3 domains. Inhibited by imatinib mesylate (Gleevec) which is used for the treatment of chronic myeloid leukemia (CML).,function:Regulates cytoskeleton remodeling during cell differentiation, cell division and cell adhesion. Localizes to dynamic actin structures, and phosph</p> |
| <b>Subcellular Location :</b> | Cytoplasm, cytoskeleton.  |
| <b>Expression :</b>           | Widely expressed.   |
| <b>Sort :</b>                 | 2221  |
| <b>No4 :</b>                  | 1   |
| <b>Host :</b>                 | Rabbit  |
| <b>Modifications :</b>        | Unmodified  |

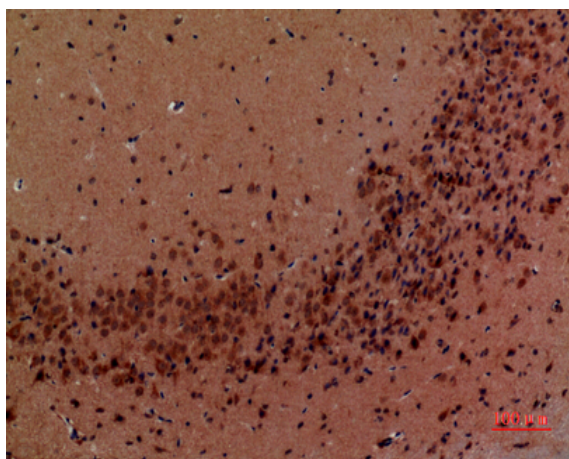
## Products Images



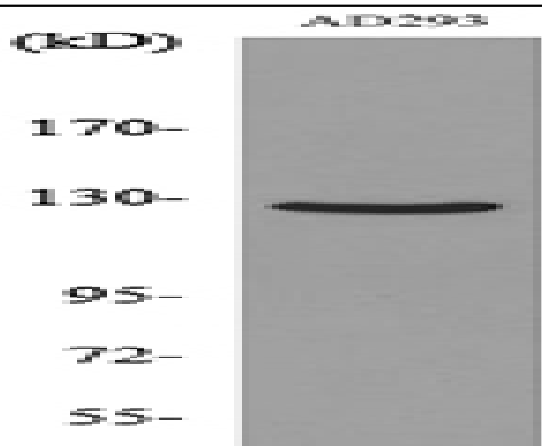
Western Blot analysis of AD293 cells using Arg Polyclonal Antibody. Secondary antibody(catalog#:RS0002) was diluted at 1:20000



Immunohistochemical analysis of paraffin-embedded rat-brain, antibody was diluted at 1:100



Immunohistochemical analysis of paraffin-embedded mouse-brain, antibody was diluted at 1:100



Western blot analysis of lysate from AD293 cells, using ABL2 Antibody.