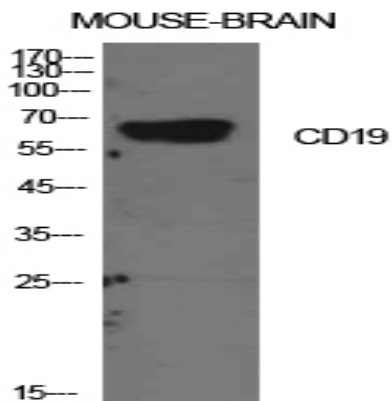


CD19 Polyclonal Antibody

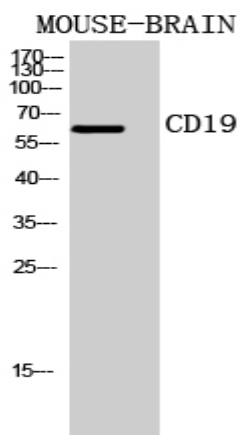
Catalog No :	YT5580
Reactivity :	Human;Rat;Mouse;
Applications :	WB;FCM;IHC;IF;ELISA
Target :	CD19
Fields :	>>PI3K-Akt signaling pathway;>>Hematopoietic cell lineage;>>B cell receptor signaling pathway;>>Epstein-Barr virus infection;>>Primary immunodeficiency
Gene Name :	CD19
Protein Name :	B-lymphocyte antigen CD19
Human Gene Id :	930
Human Swiss Prot No :	P15391
Mouse Swiss Prot No :	P25918
Immunogen :	Synthesized peptide derived from B-lymphocyte antigen CD19 at AA range: 191-240
Specificity :	CD19 Polyclonal Antibody detects endogenous levels of CD19 protein.
Formulation :	Liquid in PBS containing 50% glycerol, 0.5% BSA and 0.02% sodium azide.
Source :	Polyclonal, Rabbit,IgG
Dilution :	WB 1:500-2000;Flow Cyt 1:50-200;IHC 1:100-500;IF(paraffin section);ELISA 1:5000-20000
Purification :	The antibody was affinity-purified from rabbit antiserum by affinity-chromatography using epitope-specific immunogen.
Concentration :	1 mg/ml

Storage Stability :	<u>-15°C to -25°C/1 year(Do not lower than -25°C)</u>
Observed Band :	<u>61kD</u>
Cell Pathway :	<u>Hematopoietic cell lineage;B_Cell_Antigen;Primary immunodeficiency;</u>
Background :	<u>Lymphocytes proliferate and differentiate in response to various concentrations of different antigens. The ability of the B cell to respond in a specific, yet sensitive manner to the various antigens is achieved with the use of low-affinity antigen receptors. This gene encodes a cell surface molecule which assembles with the antigen receptor of B lymphocytes in order to decrease the threshold for antigen receptor-dependent stimulation. [provided by RefSeq, Jul 2008],</u>
Function :	<u>disease:Defects in CD19 are a cause of hypogammaglobulinemia [MIM:107265].,function:Assembles with the antigen receptor of B lymphocytes in order to decrease the threshold for antigen receptor-dependent stimulation.,online information:CD19 mutation db,PTM:Phosphorylated on serine and threonine upon DNA damage, probably by ATM or ATR. Phosphorylated on tyrosine following B-cell activation.,similarity:Contains 2 Ig-like C2-type (immunoglobulin-like) domains.,subunit:Forms a complex with CD21, CD81 and CD225 in the membrane of mature B cells. Interacts with VAV. Interacts with GRB2 and SOS when phosphorylated on Tyr-348 and/or Tyr-378. Interacts with PLCG2 when phosphorylated on Tyr-409.,</u>
Subcellular Location :	<u>Cell membrane ; Single-pass type I membrane protein . Membrane raft ; Single-pass type I membrane protein .</u>
Expression :	<u>Detected on marginal zone and germinal center B cells in lymph nodes (PubMed:2463100). Detected on blood B cells (at protein level) (PubMed:2463100, PubMed:16672701).</u>
Tag :	<u>orthogonal</u>
Sort :	<u>3436</u>
No4 :	<u>1</u>
Host :	<u>Rabbit</u>
Modifications :	<u>Unmodified</u>

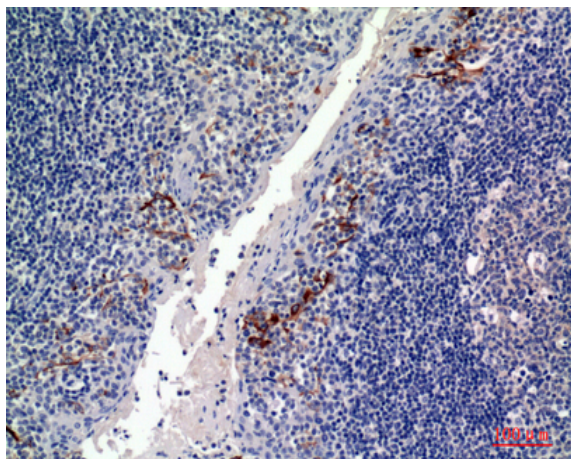
Products Images



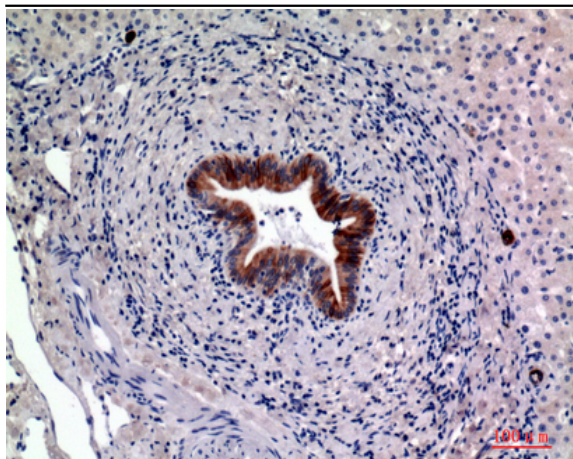
Western Blot analysis of mouse brain cells using CD19 Polyclonal Antibody. Antibody was diluted at 1:2000. Secondary antibody(catalog#:RS0002) was diluted at 1:20000



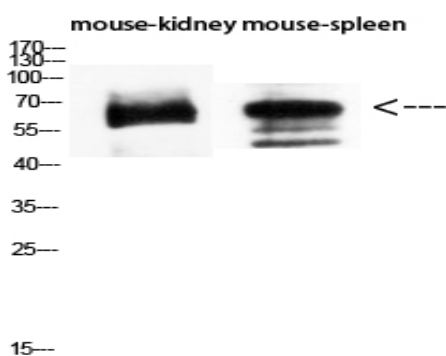
Western Blot analysis of MOUSE-BRAIN cells using CD19 Polyclonal Antibody diluted at 1:2000. Secondary antibody(catalog#:RS0002) was diluted at 1:20000



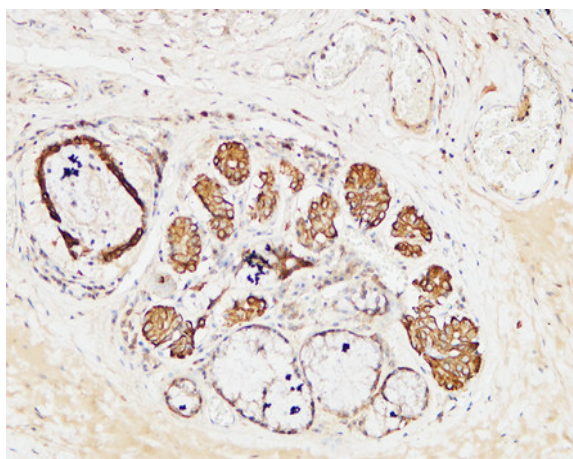
Immunohistochemical analysis of paraffin-embedded human-tonsils, antibody was diluted at 1:100



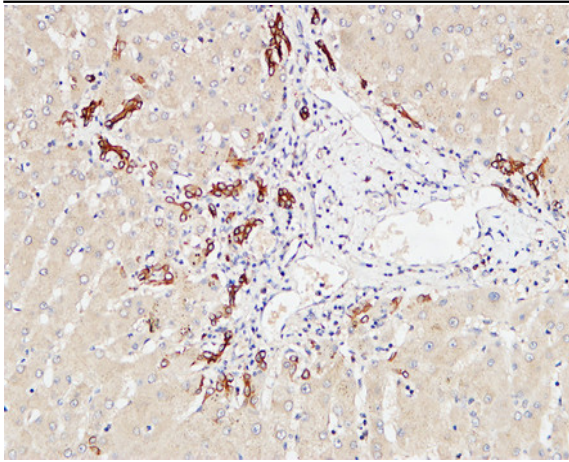
Immunohistochemical analysis of paraffin-embedded human-liver, antibody was diluted at 1:100



Western Blot analysis of mouse-kidney mouse-spleen using CD19 Polyclonal Antibody diluted at 1:1500. Secondary antibody(catalog#:RS0002) was diluted at 1:20000



Immunohistochemical analysis of paraffin-embedded Human Amygdala. 1, Antibody was diluted at 1:200(4° overnight). 2, High-pressure and temperature EDTA, pH8.0 was used for antigen retrieval. 3,Secondary antibody was diluted at 1:200(room temperature, 30min).



Immunohistochemical analysis of paraffin-embedded Human liver. 1, Antibody was diluted at 1:100(4° overnight). 2, High-pressure and temperature EDTA, pH8.0 was used for antigen retrieval. 3,Secondary antibody was diluted at 1:200(room temperature, 30min).