

## IGFBP1 Polyclonal Antibody

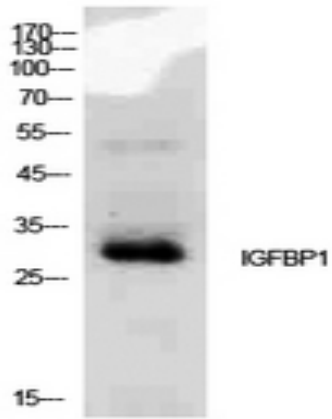
<b>Catalog No :</b>	YT5567
<b>Reactivity :</b>	Human;Rat;Mouse;
<b>Applications :</b>	WB;IHC;IF;ELISA
<b>Target :</b>	IGFBP1
<b>Gene Name :</b>	IGFBP1
<b>Protein Name :</b>	Insulin-like growth factor-binding protein 1
<b>Human Gene Id :</b>	3484
<b>Human Swiss Prot No :</b>	P08833
<b>Mouse Gene Id :</b>	16006
<b>Mouse Swiss Prot No :</b>	P47876
<b>Rat Gene Id :</b>	25685
<b>Rat Swiss Prot No :</b>	P21743
<b>Immunogen :</b>	The antiserum was produced against synthesized peptide derived from the Internal region of human IGFBP1. AA range:91-140
<b>Specificity :</b>	IGFBP1 Polyclonal Antibody detects endogenous levels of IGFBP1 protein.
<b>Formulation :</b>	Liquid in PBS containing 50% glycerol, 0.5% BSA and 0.02% sodium azide.
<b>Source :</b>	Polyclonal, Rabbit,IgG
<b>Dilution :</b>	WB 1:500 - 1:2000. IHC: 1:100-1:300. ELISA: 1:10000.. IF 1:50-200
<b>Purification :</b>	The antibody was affinity-purified from rabbit antiserum by affinity-chromatography using epitope-specific immunogen.

---

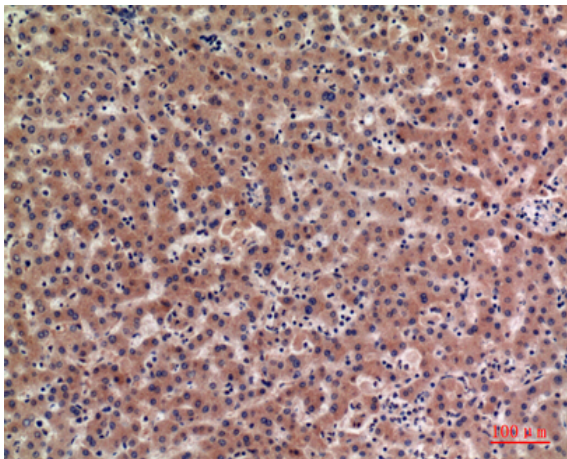
<b>Concentration :</b>	1 mg/ml
<b>Storage Stability :</b>	-15°C to -25°C/1 year(Do not lower than -25°C)
<b>Observed Band :</b>	28kD
<b>Background :</b>	This gene is a member of the insulin-like growth factor binding protein (IGFBP) family and encodes a protein with an IGFBP domain and a thyroglobulin type-I domain. The protein binds both insulin-like growth factors (IGFs) I and II and circulates in the plasma. Binding of this protein prolongs the half-life of the IGFs and alters their interaction with cell surface receptors. [provided by RefSeq, Jul 2008],
<b>Function :</b>	function:IGF-binding proteins prolong the half-life of the IGFs and have been shown to either inhibit or stimulate the growth promoting effects of the IGFs on cell culture. They alter the interaction of IGFs with their cell surface receptors. Promotes cell migration.,PTM:Phosphorylated; probably by casein kinase II. Alters the affinity of the protein for IGFs.,similarity:Contains 1 IGFBP N-terminal domain.,similarity:Contains 1 thyroglobulin type-1 domain.,subunit:Binds equally well IGF1 and IGF2.,
<b>Subcellular Location :</b>	Secreted.
<b>Expression :</b>	Amniotic fluid,Decidua,Liver,Placenta,Skin,
<b>Tag :</b>	hot
<b>Sort :</b>	8350
<b>No4 :</b>	1
<b>Host :</b>	Rabbit
<b>Modifications :</b>	Unmodified

---

## Products Images



Western Blot analysis of MCF7 cells using IGFBP1 Polyclonal Antibody. Secondary antibody(catalog#:RS0002) was diluted at 1:20000



Immunohistochemical analysis of paraffin-embedded human-liver, antibody was diluted at 1:100