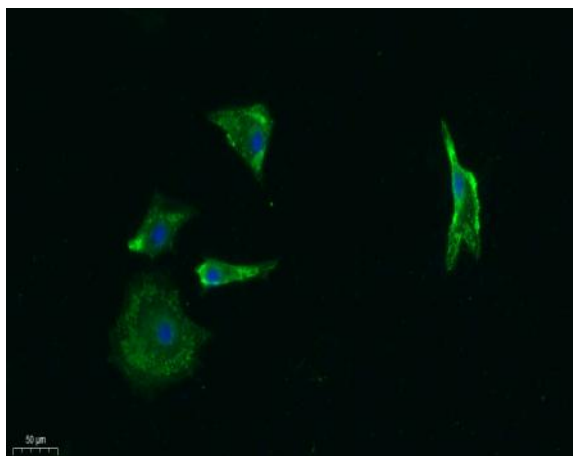


AChR α 1 Polyclonal Antibody

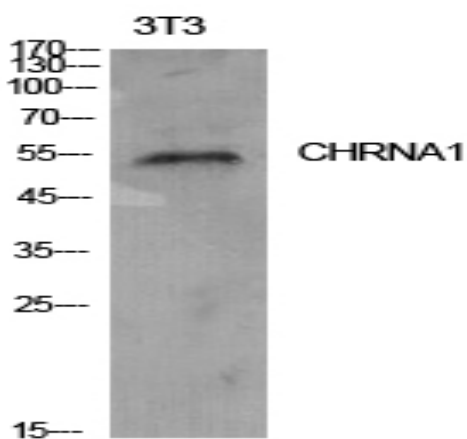
Catalog No :	YT5555
Reactivity :	Human;Mouse;Rat
Applications :	WB;IF;ELISA
Target :	AChR α 1
Fields :	>>Neuroactive ligand-receptor interaction
Gene Name :	CHRNA1
Protein Name :	Acetylcholine receptor subunit alpha
Human Gene Id :	1134
Human Swiss Prot No :	P02708
Mouse Gene Id :	11435
Mouse Swiss Prot No :	P04756
Rat Gene Id :	79557
Rat Swiss Prot No :	P25108
Immunogen :	The antiserum was produced against synthesized peptide derived from the Internal region of human CHRNA1. AA range:171-220
Specificity :	AChR α 1 Polyclonal Antibody detects endogenous levels of AChR α 1 protein.
Formulation :	Liquid in PBS containing 50% glycerol, 0.5% BSA and 0.02% sodium azide.
Source :	Polyclonal, Rabbit,IgG
Dilution :	WB 1:500 - 1:2000. ELISA: 1:5000. IF 1:100-300 Not yet tested in other applications.

Purification :	The antibody was affinity-purified from rabbit antiserum by affinity-chromatography using epitope-specific immunogen.
Concentration :	1 mg/ml
Storage Stability :	-15°C to -25°C/1 year(Do not lower than -25°C)
Observed Band :	55kD
Background :	The muscle acetylcholine receptor consists of 5 subunits of 4 different types: 2 alpha subunits and 1 each of the beta, gamma, and delta subunits. This gene encodes an alpha subunit that plays a role in acetylcholine binding/channel gating. Alternatively spliced transcript variants encoding different isoforms have been identified. [provided by RefSeq, Nov 2012],
Function :	disease:Defects in CHRNA1 are a cause of congenital myasthenic syndrome fast-channel type (FCCMS) [MIM:608930]. FCCMS is a congenital myasthenic syndrome characterized by kinetic abnormalities of the AChR. In most cases, FCCMS is due to mutations that decrease activity of the AChR by slowing the rate of opening of the receptor channel, speeding the rate of closure of the channel, or decreasing the number of openings of the channel during ACh occupancy. The result is failure to achieve threshold depolarization of the endplate and consequent failure to fire an action potential.,disease:Defects in CHRNA1 are a cause of congenital myasthenic syndrome slow-channel type (SCCMS) [MIM:601462]. SCCMS is the most common congenital myasthenic syndrome. Congenital myasthenic syndromes are characterized by muscle weakness affecting the axial and limb muscles (with hypotonia in early-onset forms), the
Subcellular Location :	Cell junction, synapse, postsynaptic cell membrane ; Multi-pass membrane protein . Cell membrane ; Multi-pass membrane protein .
Expression :	Isoform 1 is only expressed in skeletal muscle. Isoform 2 is constitutively expressed in skeletal muscle, brain, heart, kidney, liver, lung and thymus.
Tag :	orthogonal
Sort :	669
No4 :	1
Host :	Rabbit
Modifications :	Unmodified

Products Images



Immunofluorescence analysis of A549. 1,primary Antibody was diluted at 1:200(4°C overnight). 2, Goat Anti Rabbit IgG (H&L) - Alexa Fluor 488 Secondary antibody was diluted at 1:1000(room temperature, 50min).3, Picture B: DAPI(blue) 10min.



Western Blot analysis of NIH-3T3 cells using AChR α 1 Polyclonal Antibody. Secondary antibody(catalog#:RS0002) was diluted at 1:20000