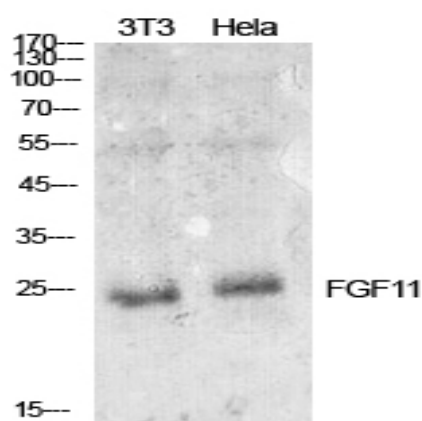


FGF-11 Polyclonal Antibody

Catalog No :	YT5547
Reactivity :	Human;Mouse;Rat
Applications :	WB;ELISA
Target :	FGF-11
Gene Name :	FGF11
Protein Name :	Fibroblast growth factor 11
Human Gene Id :	2256
Human Swiss Prot No :	Q92914
Mouse Gene Id :	14166
Mouse Swiss Prot No :	P70378
Immunogen :	The antiserum was produced against synthesized peptide derived from the Internal region of human FGF11. AA range:21-70
Specificity :	FGF-11 Polyclonal Antibody detects endogenous levels of FGF-11 protein.
Formulation :	Liquid in PBS containing 50% glycerol, 0.5% BSA and 0.02% sodium azide.
Source :	Polyclonal, Rabbit,IgG
Dilution :	WB 1:500 - 1:2000. ELISA: 1:10000. Not yet tested in other applications.
Purification :	The antibody was affinity-purified from rabbit antiserum by affinity-chromatography using epitope-specific immunogen.
Concentration :	1 mg/ml
Storage Stability :	-15°C to -25°C/1 year(Do not lower than -25°C)

Observed Band :	25kD
Cell Pathway :	MAPK_ERK_Growth;MAPK_G_Protein;Regulates Actin and Cytoskeleton;Pathways in cancer;Melanoma;
Background :	The protein encoded by this gene is a member of the fibroblast growth factor (FGF) family. FGF family members possess broad mitogenic and cell survival activities, and are involved in a variety of biological processes, including embryonic development, cell growth, morphogenesis, tissue repair, tumor growth and invasion. The function of this gene has not yet been determined. The expression pattern of the mouse homolog implies a role in nervous system development. Alternative splicing results in multiple transcript variants. [provided by RefSeq, Jan 2015],
Function :	function:Probably involved in nervous system development and function.,similarity:Belongs to the heparin-binding growth factors family.,tissue specificity:Nervous system.,
Subcellular Location :	extracellular region,
Expression :	Nervous system.
Sort :	6009
No4 :	1
Host :	Rabbit
Modifications :	Unmodified

Products Images



Western Blot analysis of NIH-3T3, HeLa cells using FGF-11 Polyclonal Antibody. Secondary antibody(catalog#:RS0002) was diluted at 1:20000