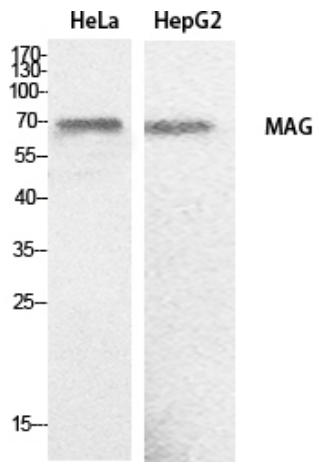


**MAG Polyclonal Antibody**

<b>Catalog No :</b>	YT5517
<b>Reactivity :</b>	Human;Mouse;Rat
<b>Applications :</b>	WB;ELISA
<b>Target :</b>	MAG
<b>Fields :</b>	>>Cell adhesion molecules
<b>Gene Name :</b>	MAG
<b>Protein Name :</b>	Myelin-associated glycoprotein
<b>Human Gene Id :</b>	4099
<b>Human Swiss Prot No :</b>	P20916
<b>Mouse Gene Id :</b>	17136
<b>Mouse Swiss Prot No :</b>	P20917
<b>Rat Gene Id :</b>	29409
<b>Rat Swiss Prot No :</b>	P07722
<b>Immunogen :</b>	The antiserum was produced against synthesized peptide derived from the C-terminal region of human MAG. AA range:501-550
<b>Specificity :</b>	MAG Polyclonal Antibody detects endogenous levels of MAG protein.
<b>Formulation :</b>	Liquid in PBS containing 50% glycerol, 0.5% BSA and 0.02% sodium azide.
<b>Source :</b>	Polyclonal, Rabbit,IgG
<b>Dilution :</b>	WB 1:500 - 1:2000. ELISA: 1:20000. Not yet tested in other applications.

<b>Purification :</b>	The antibody was affinity-purified from rabbit antiserum by affinity-chromatography using epitope-specific immunogen.
<b>Concentration :</b>	1 mg/ml
<b>Storage Stability :</b>	-15°C to -25°C/1 year(Do not lower than -25°C)
<b>Observed Band :</b>	70kD
<b>Cell Pathway :</b>	Cell adhesion molecules (CAMs);
<b>Background :</b>	The protein encoded by this gene is a type I membrane protein and member of the immunoglobulin superfamily. It is thought to be involved in the process of myelination. It is a lectin that binds to sialylated glycoconjugates and mediates certain myelin-neuron cell-cell interactions. Three alternatively spliced transcripts encoding different isoforms have been described for this gene. [provided by RefSeq, Nov 2010],
<b>Function :</b>	function:Adhesion molecule in postnatal neural development that mediates sialic-acid dependent cell-cell interactions between neuronal and myelinating cells. Preferentially binds to alpha-2,3-linked sialic acid.,online information:Siglec-4,similarity:Belongs to the immunoglobulin superfamily. SIGLEC (sialic acid binding Ig-like lectin) family.,similarity:Contains 1 Ig-like V-type (immunoglobulin-like) domain.,similarity:Contains 4 Ig-like C2-type (immunoglobulin-like) domains.,subunit:Binds to RTN4R.,
<b>Subcellular Location :</b>	Cell membrane ; Single-pass type I membrane protein . Membrane raft .
<b>Expression :</b>	Both isoform 1 and isoform 2 are detected in myelinated structures in the central and peripheral nervous system, in periaxonal myelin and at Schmidt-Lanterman incisures (PubMed:9495552, PubMed:6200494). Detected in optic nerve, in oligodendroglia and in periaxonal myelin sheaths (PubMed:6200494). Detected in compact myelin (at protein level) (PubMed:6200494). Both isoform 1 and isoform 2 are detected in the central and peripheral nervous system (PubMed:9495552).
<b>Sort :</b>	9333
<b>No4 :</b>	1
<b>Host :</b>	Rabbit
<b>Modifications :</b>	Unmodified

## Products Images



Western Blot analysis of HeLa, HepG2 cells using MAG Polyclonal Antibody. Secondary antibody(catalog#:RS0002) was diluted at 1:20000