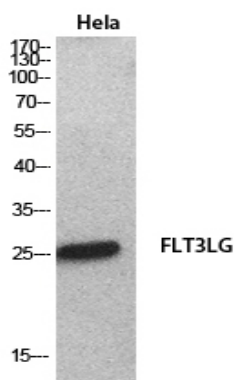


Flt3-L Polyclonal Antibody

Catalog No :	YT5516
Reactivity :	Human;Rat;Mouse;
Applications :	WB;ELISA
Target :	Flt3-L
Fields :	>>MAPK signaling pathway;>>Ras signaling pathway;>>PI3K-Akt signaling pathway;>>Hematopoietic cell lineage;>>Pathways in cancer
Gene Name :	FLT3LG
Protein Name :	Fms-related tyrosine kinase 3 ligand
Human Gene Id :	2323
Human Swiss Prot No :	P49771
Mouse Swiss Prot No :	P49772
Immunogen :	The antiserum was produced against synthesized peptide derived from the C-terminal region of human FLT3LG. AA range:171-220
Specificity :	Flt3-L Polyclonal Antibody detects endogenous levels of Flt3-L protein.
Formulation :	Liquid in PBS containing 50% glycerol, 0.5% BSA and 0.02% sodium azide.
Source :	Polyclonal, Rabbit,IgG
Dilution :	WB 1:500 - 1:2000. ELISA: 1:20000. Not yet tested in other applications.
Purification :	The antibody was affinity-purified from rabbit antiserum by affinity-chromatography using epitope-specific immunogen.
Concentration :	1 mg/ml
Storage Stability :	-15°C to -25°C/1 year(Do not lower than -25°C)

Observed Band :	26kD
Cell Pathway :	Cytokine-cytokine receptor interaction;Hematopoietic cell lineage;Pathways in cancer;
Background :	Dendritic cells (DCs) provide the key link between innate and adaptive immunity by recognizing pathogens and priming pathogen-specific immune responses. FLT3LG controls the development of DCs and is particularly important for plasmacytoid DCs and CD8 (see MIM 186910)-positive classical DCs and their CD103 (ITGAE; MIM 604682)-positive tissue counterparts (summary by Sathaliyawala et al., 2010 [PubMed 20933441]).[supplied by OMIM, Jan 2011],
Function :	function:Stimulates the proliferation of early hematopoietic cells. Synergizes well with a number of other colony stimulating factors and interleukins.,subunit:Homodimer (isoform 2).,
Subcellular Location :	[Isoform 1]: Cell membrane; Single-pass type I membrane protein.; [Isoform 2]: Secreted.
Expression :	Brain,Spleen,
Sort :	6193
No4 :	1
Host :	Rabbit
Modifications :	Unmodified

Products Images



Western Blot analysis of HeLa cells using Flt3-L Polyclonal Antibody. Secondary antibody(catalog#:RS0002) was diluted at 1:20000