

CD203c Polyclonal Antibody

Catalog No :	YT5274
Reactivity :	Human;Mouse;Rat
Applications :	WB;IHC;IF;ELISA
Target :	CD203c
Fields :	>>Purine metabolism;>>Pyrimidine metabolism;>>Starch and sucrose metabolism;>>Riboflavin metabolism;>>Nicotinate and nicotinamide metabolism;>>Pantothenate and CoA biosynthesis;>>Metabolic pathways;>>Nucleotide metabolism
Gene Name :	ENPP3
Protein Name :	Ectonucleotide pyrophosphatase/phosphodiesterase family member 3
Human Gene Id :	5169
Human Swiss Prot No :	O14638
Mouse Gene Id :	209558
Mouse Swiss Prot No :	Q6DYE8
Rat Gene Id :	54410
Rat Swiss Prot No :	P97675
Immunogen :	The antiserum was produced against synthesized peptide derived from the Internal region of human ENPP3. AA range:281-330
Specificity :	CD203c Polyclonal Antibody detects endogenous levels of CD203c protein.
Formulation :	Liquid in PBS containing 50% glycerol, 0.5% BSA and 0.02% sodium azide.
Source :	Polyclonal, Rabbit,IgG

Dilution :	WB 1:500 - 1:2000. IHC: 1:100-300 ELISA: 1:20000.. IF 1:50-200
Purification :	The antibody was affinity-purified from rabbit antiserum by affinity-chromatography using epitope-specific immunogen.
Concentration :	1 mg/ml
Storage Stability :	-15°C to -25°C/1 year(Do not lower than -25°C)
Observed Band :	100kD
Cell Pathway :	Purine metabolism;Starch and sucrose metabolism;Riboflavin metabolism;Nicotinate and nicotinamide metabolism;Pantothenate and CoA biosynthesis;
Background :	The protein encoded by this gene belongs to a series of ectoenzymes that are involved in hydrolysis of extracellular nucleotides. These ectoenzymes possess ATPase and ATP pyrophosphatase activities and are type II transmembrane proteins. Expression of the related rat mRNA has been found in a subset of immature glial cells and in the alimentary tract. The corresponding rat protein has been detected in the pancreas, small intestine, colon, and liver. The human mRNA is expressed in glioma cells, prostate, and uterus. Expression of the human protein has been detected in uterus, basophils, and mast cells. Two transcript variants, one protein coding and the other non-protein coding, have been found for this gene. [provided by RefSeq, Oct 2015],
Function :	catalytic activity:A dinucleotide + H(2)O = 2 mononucleotides.,catalytic activity:Hydrolytically removes 5'-nucleotides successively from the 3'-hydroxy termini of 3'-hydroxy-terminated oligonucleotides.,cofactor:Binds 2 divalent metal cations per subunit.,enzyme regulation:At low concentrations of ATP, a phosphorylated active site intermediate is formed which inhibits further ATP hydrolysis.,function:Cleaves a variety of phosphodiester and phosphosulfate bonds including deoxynucleotides, nucleotide sugars, and NAD.,induction:Up-regulated by stimulation by allergen or by cross-linking with IgE. The IgE-mediated activation is enhanced by tetradecanoyl phorbol acetate (TPA), a stimulator of the PKC pathway, and inhibited by the P13 kinase inhibitors, LY294002 and wortmannin. Up-regulated in invasive bile duct cancers.,PTM:It has been suggested that the active SMB domain may be permitted co
Subcellular Location :	Cell membrane ; Single-pass type II membrane protein . Apical cell membrane ; Single-pass type II membrane protein . Secreted . Detected at the cell surface of basophils (PubMed:11342463). Detected at the apical plasma membrane of bile duct cells (PubMed:15072822). Located to the apical surface in intestinal and kidney epithelial cells. Secreted in serum, and in lumen of epithelial cells. .
Expression :	Detected on bile ducts in liver, and in blood serum (at protein level) (PubMed:15072822). Detected in prostate and uterus (PubMed:9344668).

Detected on basophils, but not neutrophils (PubMed:11342463).

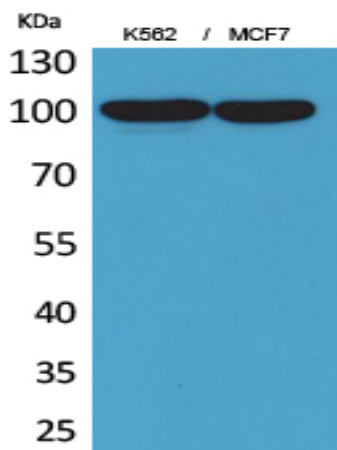
Sort : 3452

No4 : 1

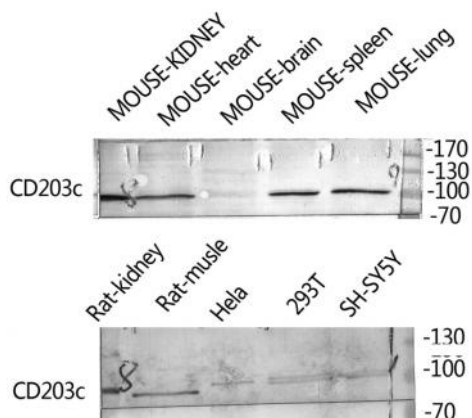
Host : Rabbit

Modifications : Unmodified

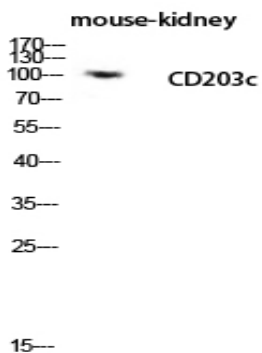
Products Images



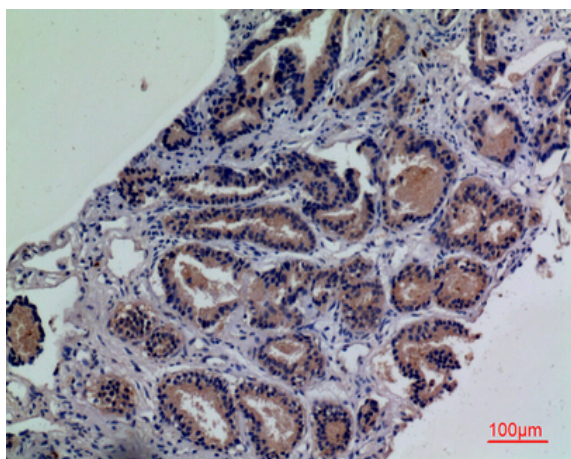
Western Blot analysis of K562, MCF7 cells using CD203c Polyclonal Antibody. Antibody was diluted at 1:2000. Secondary antibody(catalog#:RS0002) was diluted at 1:20000



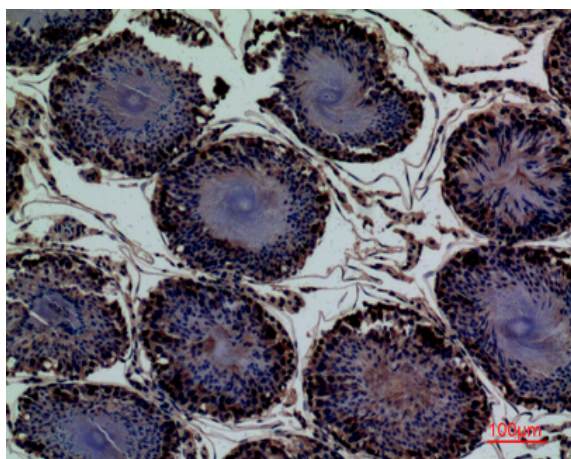
Western Blot analysis of rat-kidney hela 293T SH-SY5Y MOUSE-KIDNEY MOUSE-SPLEEN MOUSE-LUNG using ENPP3 Polyclonal Antibody. Antibody was diluted at 1:2000. Secondary antibody(catalog#:RS0002) was diluted at 1:20000



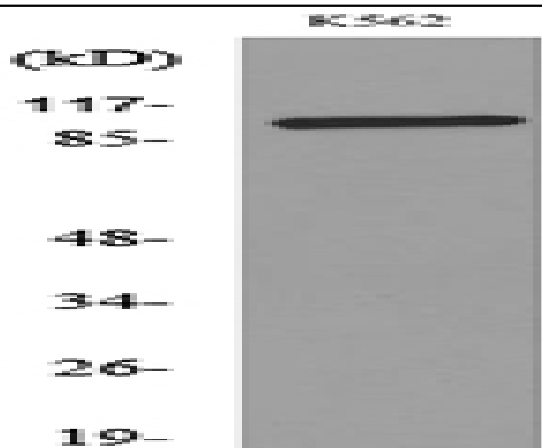
Western blot analysis of mouse-kidney lysis using CD203c antibody. Antibody was diluted at 1:2000. Secondary antibody(catalog#:RS0002) was diluted at 1:20000



Immunohistochemical analysis of paraffin-embedded human-prostate-cancer, antibody was diluted at 1:100



Immunohistochemical analysis of paraffin-embedded rat-testis, antibody was diluted at 1:100



Western blot analysis of lysate from K562 cells, using ENPP3 Antibody.