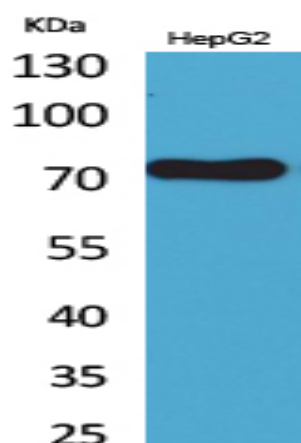


## CD229 Polyclonal Antibody

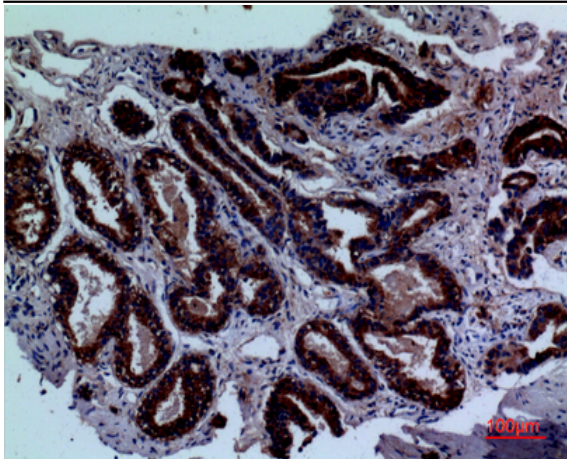
<b>Catalog No :</b>	YT5271
<b>Reactivity :</b>	Human;Mouse
<b>Applications :</b>	WB;IHC;IF;ELISA
<b>Target :</b>	CD229
<b>Gene Name :</b>	LY9
<b>Protein Name :</b>	T-lymphocyte surface antigen Ly-9
<b>Human Gene Id :</b>	4063
<b>Human Swiss Prot No :</b>	Q9HBG7
<b>Mouse Gene Id :</b>	17085
<b>Mouse Swiss Prot No :</b>	Q01965
<b>Immunogen :</b>	The antiserum was produced against synthesized peptide derived from the Internal region of human LY9. AA range:261-310
<b>Specificity :</b>	CD229 Polyclonal Antibody detects endogenous levels of CD229 protein.
<b>Formulation :</b>	Liquid in PBS containing 50% glycerol, 0.5% BSA and 0.02% sodium azide.
<b>Source :</b>	Polyclonal, Rabbit,IgG
<b>Dilution :</b>	WB 1:500 - 1:2000. IHC: 1:100-300 ELISA: 1:20000.. IF 1:50-200
<b>Purification :</b>	The antibody was affinity-purified from rabbit antiserum by affinity-chromatography using epitope-specific immunogen.
<b>Concentration :</b>	1 mg/ml
<b>Storage Stability :</b>	-15°C to -25°C/1 year(Do not lower than -25°C)

**Observed Band :** 72kD**Background :** LY9 belongs to the SLAM family of immunomodulatory receptors (see SLAMF1; MIM 603492) and interacts with the adaptor molecule SAP (SH2D1A; MIM 300490) (Graham et al., 2006 [PubMed 16365421]).[supplied by OMIM, Mar 2008],**Function :** alternative products:Experimental confirmation may be lacking for some isoforms,function:May participate in adhesion reactions between T lymphocytes and accessory cells by homophilic interaction.,similarity:Contains 2 Ig-like C2-type (immunoglobulin-like) domains.,similarity:Contains 2 Ig-like V-type (immunoglobulin-like) domains.,**Subcellular Location :** Membrane; Single-pass type I membrane protein. Cell membrane .**Expression :** Increased surface expression on T-cells of systemic lupus erythematosus (SLE) patients.**Sort :** 3472**No4 :** 1**Host :** Rabbit**Modifications :** Unmodified

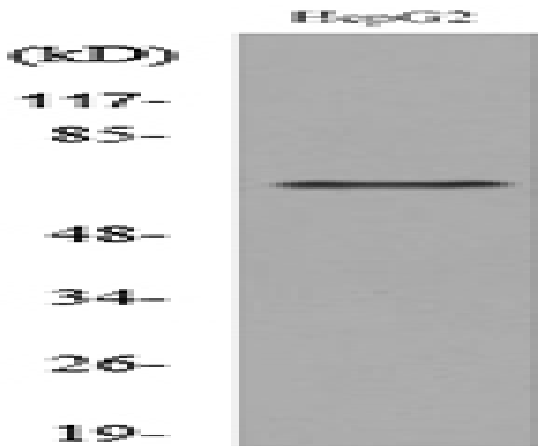
## Products Images



Western Blot analysis of HepG2 cells using CD229 Polyclonal Antibody. Secondary antibody(catalog#:RS0002) was diluted at 1:20000



Immunohistochemical analysis of paraffin-embedded human-prostate-cancer, antibody was diluted at 1:100



Western blot analysis of lysate from HepG2 cells, using LY9 Antibody.