

## CD116 Polyclonal Antibody

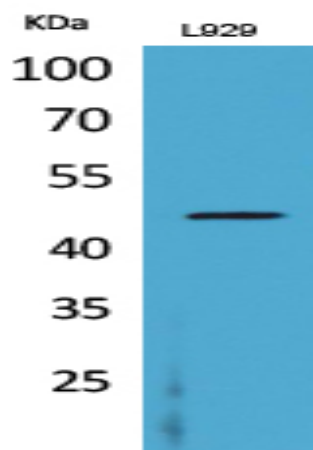
<b>Catalog No :</b>	YT5262
<b>Reactivity :</b>	Human;Mouse
<b>Applications :</b>	WB;IHC;IF;ELISA
<b>Target :</b>	CD116
<b>Fields :</b>	>>Cytokine-cytokine receptor interaction;>>JAK-STAT signaling pathway;>>Hematopoietic cell lineage;>>Pathways in cancer
<b>Gene Name :</b>	CSF2RA
<b>Protein Name :</b>	Granulocyte-macrophage colony-stimulating factor receptor subunit alpha
<b>Human Gene Id :</b>	1438
<b>Human Swiss Prot No :</b>	P15509
<b>Mouse Swiss Prot No :</b>	Q00941
<b>Immunogen :</b>	The antiserum was produced against synthesized peptide derived from the Internal region of human CSF2RA. AA range:121-170
<b>Specificity :</b>	CD116 Polyclonal Antibody detects endogenous levels of CD116 protein.
<b>Formulation :</b>	Liquid in PBS containing 50% glycerol, 0.5% BSA and 0.02% sodium azide.
<b>Source :</b>	Polyclonal, Rabbit,IgG
<b>Dilution :</b>	WB 1:500 - 1:2000. IHC: 1:100-300 ELISA: 1:20000.. IF 1:50-200
<b>Purification :</b>	The antibody was affinity-purified from rabbit antiserum by affinity-chromatography using epitope-specific immunogen.
<b>Concentration :</b>	1 mg/ml
<b>Storage Stability :</b>	-15°C to -25°C/1 year(Do not lower than -25°C)

---

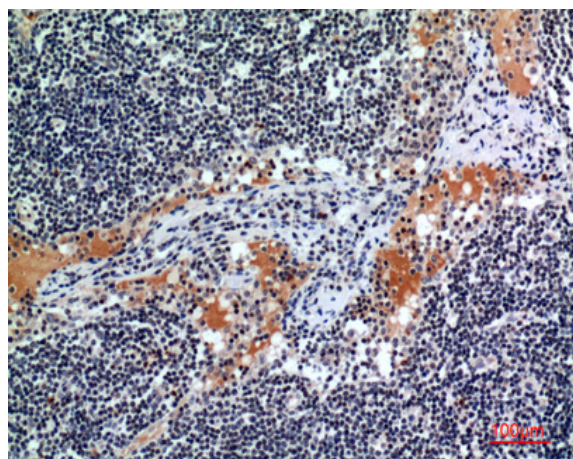
<b>Observed Band :</b>	44kD
<b>Cell Pathway :</b>	Cytokine-cytokine receptor interaction;Jak_STAT;Hematopoietic cell lineage;Pathways in cancer;
<b>Background :</b>	The protein encoded by this gene is the alpha subunit of the heterodimeric receptor for colony stimulating factor 2, a cytokine which controls the production, differentiation, and function of granulocytes and macrophages. The encoded protein is a member of the cytokine family of receptors. This gene is found in the pseudoautosomal region (PAR) of the X and Y chromosomes. Multiple transcript variants encoding different isoforms have been found for this gene, with some of the isoforms being membrane-bound and others being soluble. [provided by RefSeq, Jul 2008],
<b>Function :</b>	domain:The box 1 motif is required for JAK interaction and/or activation.,domain:The WSXWS motif appears to be necessary for proper protein folding and thereby efficient intracellular transport and cell-surface receptor binding.,function:Low affinity receptor for granulocyte-macrophage colony-stimulating factor. Transduces a signal that results in the proliferation, differentiation, and functional activation of hematopoietic cells.,miscellaneous:The gene encoding for this protein is located in the pseudoautosomal region 1 (PAR1) of X and Y chromosomes.,similarity:Belongs to the type I cytokine receptor family. Type 5 subfamily.,subunit:Heterodimer of an alpha and a beta subunit. The beta subunit is common to the IL3, IL5 and GM-CSF receptors.,
<b>Subcellular Location :</b>	Cell membrane; Single-pass type I membrane protein.; [Isoform 3]: Secreted .; [Isoform 4]: Secreted .; [Isoform 6]: Secreted .
<b>Expression :</b>	Blood,Placenta,Synovial membrane tissue,Uterus,
<b>Sort :</b>	3368
<b>No4 :</b>	1
<b>Host :</b>	Rabbit
<b>Modifications :</b>	Unmodified

---

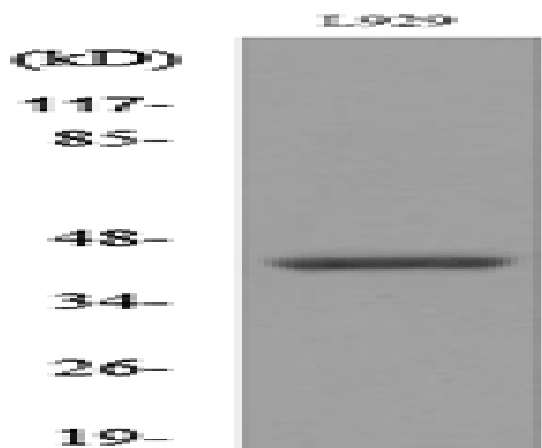
## Products Images



Western Blot analysis of L929 cells using CD116 Polyclonal Antibody. Secondary antibody(catalog#:RS0002) was diluted at 1:20000



Immunohistochemical analysis of paraffin-embedded human-lymph, antibody was diluted at 1:100



Western blot analysis of lysate from L929 cells, using CSF2RA Antibody.