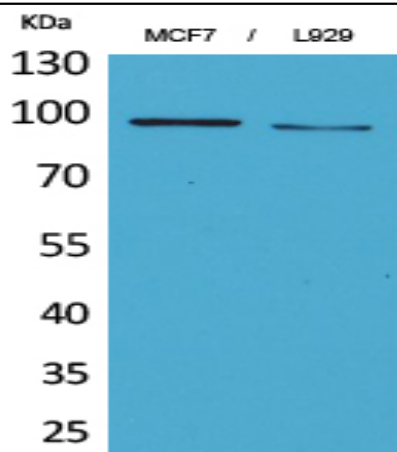


CD100 Polyclonal Antibody

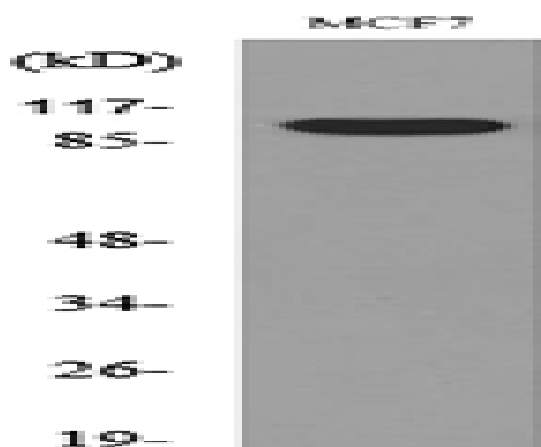
Catalog No :	YT5259
Reactivity :	Human;Mouse;Rat
Applications :	WB;ELISA
Target :	CD100
Fields :	>>Axon guidance
Gene Name :	SEMA4D
Protein Name :	Semaphorin-4D
Human Gene Id :	10507
Human Swiss Prot No :	Q92854
Mouse Gene Id :	20354
Mouse Swiss Prot No :	O09126
Immunogen :	The antiserum was produced against synthesized peptide derived from the N-terminal region of human SEMA4D. AA range:61-110
Specificity :	CD100 Polyclonal Antibody detects endogenous levels of CD100 protein.
Formulation :	Liquid in PBS containing 50% glycerol, 0.5% BSA and 0.02% sodium azide.
Source :	Polyclonal, Rabbit,IgG
Dilution :	WB 1:500 - 1:2000. ELISA: 1:20000. Not yet tested in other applications.
Purification :	The antibody was affinity-purified from rabbit antiserum by affinity-chromatography using epitope-specific immunogen.
Concentration :	1 mg/ml

Storage Stability :	<u>-15°C to -25°C/1 year(Do not lower than -25°C)</u>
Observed Band :	<u>95kD</u>
Cell Pathway :	<u>Axon guidance;</u>
Background :	<u>function:May play a functional role in the immune system, as well as in the nervous system. Induces B-cells to aggregate and improves their viability in vitro.,similarity:Belongs to the semaphorin family.,similarity:Contains 1 Ig-like C2-type (immunoglobulin-like) domain.,similarity:Contains 1 PSI domain.,similarity:Contains 1 Sema domain.,subunit:Homodimer. Binds PLXNB1.,tissue specificity:Strongly expressed in skeletal muscle, peripheral blood lymphocytes, spleen, and thymus and also expressed at lower levels in testes, brain, kidney, small intestine, prostate, heart, placenta, lung and pancreas, but not in colon and liver.,</u>
Function :	<u>function:May play a functional role in the immune system, as well as in the nervous system. Induces B-cells to aggregate and improves their viability in vitro.,similarity:Belongs to the semaphorin family.,similarity:Contains 1 Ig-like C2-type (immunoglobulin-like) domain.,similarity:Contains 1 PSI domain.,similarity:Contains 1 Sema domain.,subunit:Homodimer. Binds PLXNB1.,tissue specificity:Strongly expressed in skeletal muscle, peripheral blood lymphocytes, spleen, and thymus and also expressed at lower levels in testes, brain, kidney, small intestine, prostate, heart, placenta, lung and pancreas, but not in colon and liver.,</u>
Subcellular Location :	<u>Cell membrane ; Single-pass type I membrane protein .</u>
Expression :	<u>Strongly expressed in skeletal muscle, peripheral blood lymphocytes, spleen, and thymus and also expressed at lower levels in testes, brain, kidney, small intestine, prostate, heart, placenta, lung and pancreas, but not in colon and liver.</u>
Sort :	<u>3351</u>
No4 :	<u>1</u>
Host :	<u>Rabbit</u>
Modifications :	<u>Unmodified</u>

Products Images



Western blot analysis of MCF7, L929 cells using CD100 Polyclonal Antibody. Secondary antibody(catalog#:RS0002) was diluted at 1:20000



Western blot analysis of lysate from MCF7 cells, using SEMA4D Antibody.