

SAMHD1 Polyclonal Antibody

Catalog No :	YT5491
Reactivity :	Human;Rat;Mouse;
Applications :	WB;IHC;IF;ELISA
Target :	SAMHD1
Fields :	>>Viral life cycle - HIV-1;>>Human immunodeficiency virus 1 infection
Gene Name :	SAMHD1
Protein Name :	SAM domain and HD domain-containing protein 1
Human Gene Id :	25939
Human Swiss Prot No :	Q9Y3Z3
Mouse Gene Id :	56045
Mouse Swiss Prot No :	Q60710
Immunogen :	The antiserum was produced against synthesized peptide derived from the Internal region of human SAMHD1. AA range:431-480
Specificity :	SAMHD1 Polyclonal Antibody detects endogenous levels of SAMHD1 protein.
Formulation :	Liquid in PBS containing 50% glycerol, 0.5% BSA and 0.02% sodium azide.
Source :	Polyclonal, Rabbit,IgG
Dilution :	WB 1:500 - 1:2000. IHC: 1:100-1:300. ELISA: 1:20000.. IF 1:50-200
Purification :	The antibody was affinity-purified from rabbit antiserum by affinity-chromatography using epitope-specific immunogen.
Concentration :	1 mg/ml

Storage Stability : -15°C to -25°C/1 year(Do not lower than -25°C)

Observed Band : 72kD

Background : SAM and HD domain containing deoxynucleoside triphosphate triphosphohydrolase 1 (SAMHD1) Homo sapiens This gene may play a role in regulation of the innate immune response. The encoded protein is upregulated in response to viral infection and may be involved in mediation of tumor necrosis factor-alpha proinflammatory responses. Mutations in this gene have been associated with Aicardi-Goutieres syndrome. [provided by RefSeq, Mar 2010],

Function : function:May play a role in mediating proinflammatory responses to TNF-alpha signaling.,induction:By interferon gamma. Up-regulated in TNF-alpha treated lung fibroblasts.,similarity:Contains 1 HD domain.,similarity:Contains 1 SAM (sterile alpha motif) domain.,tissue specificity:Expressed in heart, skeletal muscle, spleen, liver, small intestine, placenta, lung and peripheral blood leukocytes. No expression is seen in brain and thymus.,

Subcellular Location : Nucleus . Chromosome . Localizes to sites of DNA double-strand breaks in response to DNA damage. .

Expression : Expressed in heart, skeletal muscle, spleen, liver, small intestine, placenta, lung and peripheral blood leukocytes (PubMed:11064105). No expression is seen in brain and thymus (PubMed:11064105).

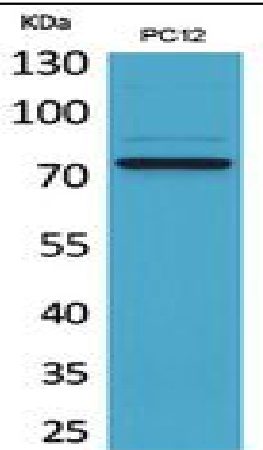
Sort : 14757

No4 : 1

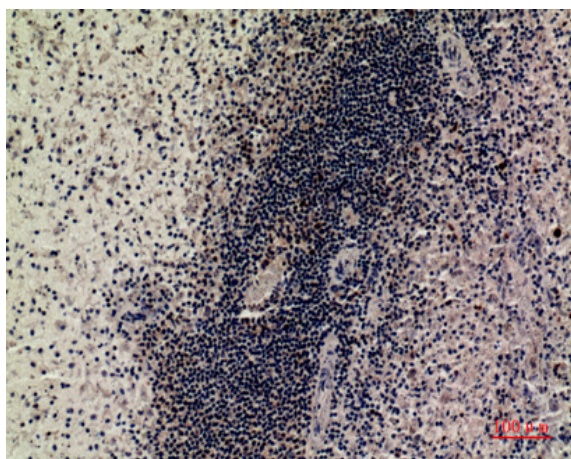
Host : Rabbit

Modifications : Unmodified

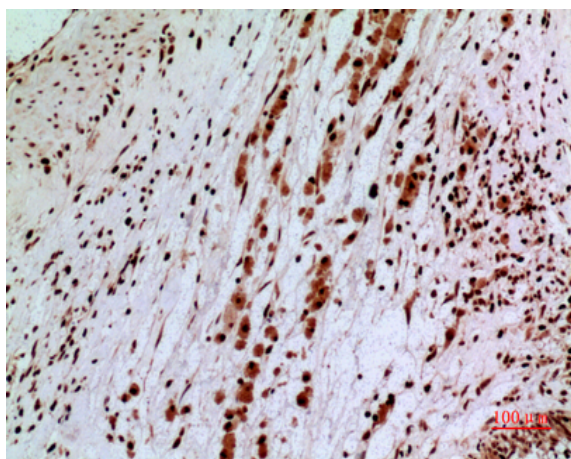
Products Images



Western Blot analysis of PC12 cells using SAMHD1 Polyclonal Antibody. Secondary antibody(catalog#:RS0002) was diluted at 1:20000 cells nucleus extracted by Minute TM Cytoplasmic and Nuclear Fractionation kit (SC-003, Inventbiotech, MN, USA).



Immunohistochemical analysis of paraffin-embedded human spleen, antibody was diluted at 1:100



Immunohistochemical analysis of paraffin-embedded human brain, antibody was diluted at 1:100