

## CD225 Polyclonal Antibody

|                              |  |
|------------------------------|--|
| <b>Catalog No :</b>          | YT5478   |
| <b>Reactivity :</b>          | Human;Rat;Mouse;   |
| <b>Applications :</b>        | WB;IHC;IF;ELISA  |
| <b>Target :</b>              | CD225  |
| <b>Fields :</b>              | >>B cell receptor signaling pathway  |
| <b>Gene Name :</b>           | IFITM1   |
| <b>Protein Name :</b>        | Interferon-induced transmembrane protein 1   |
| <b>Human Gene Id :</b>       | 8519   |
| <b>Human Swiss Prot No :</b> | P13164   |
| <b>Mouse Gene Id :</b>       | 68713  |
| <b>Mouse Swiss Prot No :</b> | Q9D103   |
| <b>Immunogen :</b>           | The antiserum was produced against synthesized peptide derived from the N-terminal region of human IFITM1. AA range:1-50 |
| <b>Specificity :</b>         | CD225 Polyclonal Antibody detects endogenous levels of CD225 protein.  |
| <b>Formulation :</b>         | Liquid in PBS containing 50% glycerol, 0.5% BSA and 0.02% sodium azide.  |
| <b>Source :</b>              | Polyclonal, Rabbit,IgG   |
| <b>Dilution :</b>            | WB 1:500 - 1:2000. IHC: 1:100-1:300. ELISA: 1:20000.. IF 1:50-200  |
| <b>Purification :</b>        | The antibody was affinity-purified from rabbit antiserum by affinity-chromatography using epitope-specific immunogen.    |
| <b>Concentration :</b>       | 1 mg/ml  |

**Storage Stability :** -15°C to -25°C/1 year(Do not lower than -25°C)

**Observed Band :** 15kD

**Cell Pathway :** B\_Cell\_Antigen;

**Background :** function:Implicated in the control of cell growth. Component of a multimeric complex involved in the transduction of antiproliferative and homotypic adhesion signals.,induction:By alpha and gamma interferons.,similarity:Belongs to the CD225 family.,

**Function :** function:Implicated in the control of cell growth. Component of a multimeric complex involved in the transduction of antiproliferative and homotypic adhesion signals.,induction:By alpha and gamma interferons.,similarity:Belongs to the CD225 family.,

**Subcellular Location :** Cell membrane ; Single-pass membrane protein . Lysosome membrane .

**Expression :** Bone (at protein level). Levels greatly elevated in colon cancer, cervical cancer, esophageal cancer and ovarian cancer. Expressed in glioma cell lines.

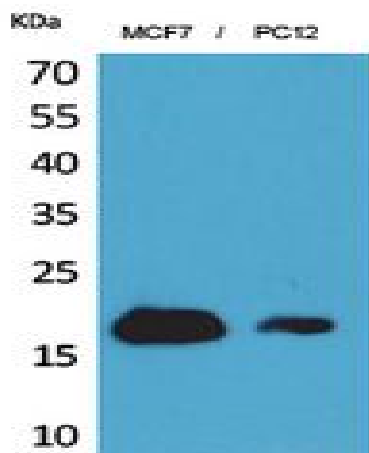
**Sort :** 3471

**No4 :** 1

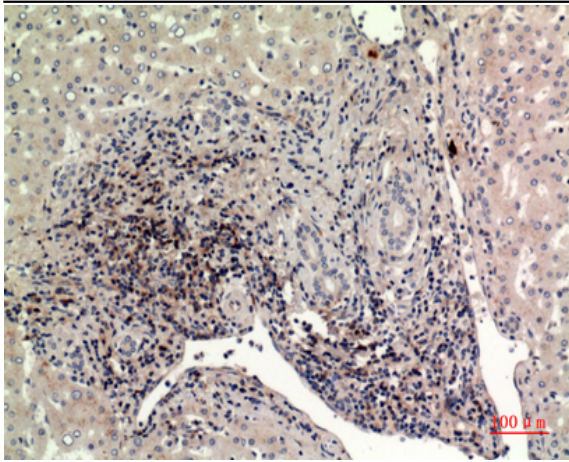
**Host :** Rabbit

**Modifications :** Unmodified

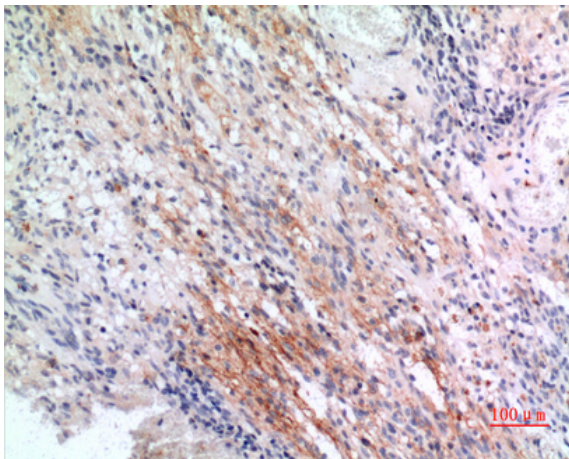
## Products Images



Western Blot analysis of MCF7, PC12 cells using CD225 Polyclonal Antibody. Secondary antibody(catalog#:RS0002) was diluted at 1:20000



Immunohistochemical analysis of paraffin-embedded human-liver, antibody was diluted at 1:100



Immunohistochemical analysis of paraffin-embedded human-brain, antibody was diluted at 1:100