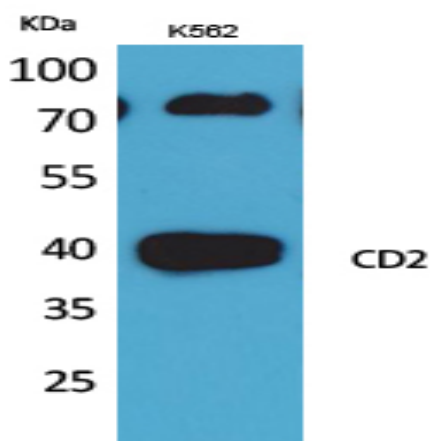


## CD2 Polyclonal Antibody

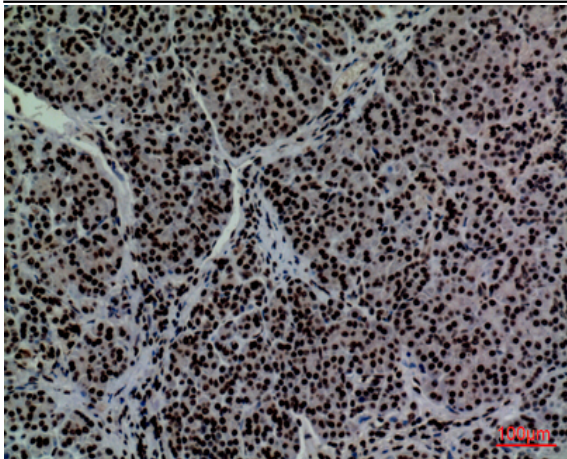
<b>Catalog No :</b>	YT5241
<b>Reactivity :</b>	Human;Rat;Mouse;
<b>Applications :</b>	WB;IHC;IF;ELISA
<b>Target :</b>	CD2
<b>Fields :</b>	>>Cell adhesion molecules;>>Hematopoietic cell lineage
<b>Gene Name :</b>	CD2
<b>Protein Name :</b>	T-cell surface antigen CD2
<b>Human Gene Id :</b>	914
<b>Human Swiss Prot No :</b>	P06729
<b>Mouse Swiss Prot No :</b>	P08920
<b>Immunogen :</b>	The antiserum was produced against synthesized peptide derived from the N-terminal region of human CD2. AA range:31-80
<b>Specificity :</b>	CD2 Polyclonal Antibody detects endogenous levels of CD2 protein.
<b>Formulation :</b>	Liquid in PBS containing 50% glycerol, 0.5% BSA and 0.02% sodium azide.
<b>Source :</b>	Polyclonal, Rabbit,IgG
<b>Dilution :</b>	WB 1:500 - 1:2000. IHC: 1:100-300 ELISA: 1:20000.. IF 1:50-200
<b>Purification :</b>	The antibody was affinity-purified from rabbit antiserum by affinity-chromatography using epitope-specific immunogen.
<b>Concentration :</b>	1 mg/ml
<b>Storage Stability :</b>	-15°C to -25°C/1 year(Do not lower than -25°C)

<b>Observed Band :</b>	39kD
<b>Cell Pathway :</b>	Cell adhesion molecules (CAMs);Hematopoietic cell lineage;
<b>Background :</b>	The protein encoded by this gene is a surface antigen found on all peripheral blood T-cells. The encoded protein interacts with LFA3 (CD58) on antigen presenting cells to optimize immune recognition. A locus control region (LCR) has been found in the 3' flanking sequence of this gene. [provided by RefSeq, Jun 2016],
<b>Function :</b>	function:CD2 interacts with lymphocyte function-associated antigen (LFA-3) and CD48/BCM1 to mediate adhesion between T-cells and other cell types. CD2 is implicated in the triggering of T-cells, the cytoplasmic domain is implicated in the signaling function.,online information:CD2 entry,similarity:Contains 1 Ig-like C2-type (immunoglobulin-like) domain.,similarity:Contains 1 Ig-like V-type (immunoglobulin-like) domain.,subunit:Interacts with CD2AP (By similarity). Interacts with PSTPIP1.,
<b>Subcellular Location :</b>	Cell membrane ; Single-pass type I membrane protein .
<b>Expression :</b>	Expressed in natural killer cells (at protein level).
<b>Sort :</b>	42
<b>No4 :</b>	1
<b>Host :</b>	Rabbit
<b>Modifications :</b>	Unmodified

## Products Images



Western Blot analysis of K562 cells using CD2 Polyclonal Antibody. Secondary antibody(catalog#:RS0002) was diluted at 1:20000



Immunohistochemical analysis of paraffin-embedded human-pancreas, antibody was diluted at 1:100