

CD200 Polyclonal Antibody

Catalog No :	YT5474
Reactivity :	Human;Rat;Mouse;
Applications :	WB;IHC;IF;ELISA
Target :	CD200
Gene Name :	CD200
Protein Name :	OX-2 membrane glycoprotein
Human Gene Id :	4345
Human Swiss Prot No :	P41217
Mouse Swiss Prot No :	O54901
Rat Swiss Prot No :	P04218
Immunogen :	The antiserum was produced against synthesized peptide derived from the Internal region of human CD200. AA range:171-220
Specificity :	CD200 Polyclonal Antibody detects endogenous levels of CD200 protein.
Formulation :	Liquid in PBS containing 50% glycerol, 0.5% BSA and 0.02% sodium azide.
Source :	Polyclonal, Rabbit,IgG
Dilution :	WB 1:500 - 1:2000. IHC: 1:100-1:300. ELISA: 1:20000.. IF 1:50-200
Purification :	The antibody was affinity-purified from rabbit antiserum by affinity-chromatography using epitope-specific immunogen.
Concentration :	1 mg/ml
Storage Stability :	-15°C to -25°C/1 year(Do not lower than -25°C)

Observed Band : 31kD

Background : This gene encodes a type I membrane glycoprotein containing two extracellular immunoglobulin domains, a transmembrane and a cytoplasmic domain. This gene is expressed by various cell types, including B cells, a subset of T cells, thymocytes, endothelial cells, and neurons. The encoded protein plays an important role in immunosuppression and regulation of anti-tumor activity. Alternative splicing results in multiple transcript variants encoding different isoforms. [provided by RefSeq, Jan 2016],

Function : function:Costimulates T-cell proliferation. May regulate myeloid cell activity in a variety of tissues.,similarity:Contains 1 Ig-like C2-type (immunoglobulin-like) domain.,similarity:Contains 1 Ig-like V-type (immunoglobulin-like) domain.,subunit:Interacts with CD200R1.,

Subcellular Location : Cell membrane; Single-pass type I membrane protein.

Expression : Blood,Brain,Fetal brain,

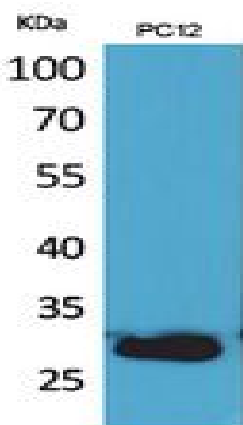
Sort : 3450

No4 : 1

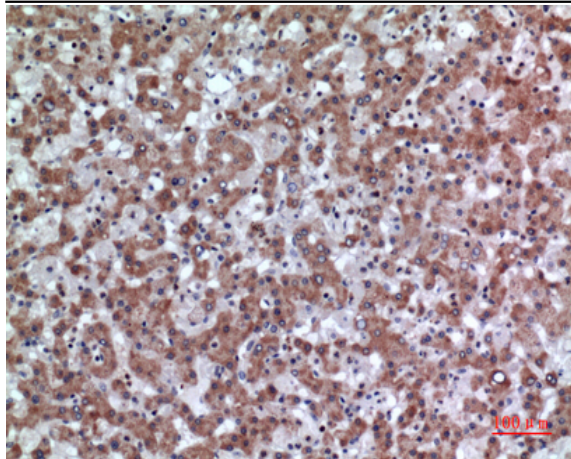
Host : Rabbit

Modifications : Unmodified

Products Images



Western Blot analysis of PC12 cells using CD200 Polyclonal Antibody. Secondary antibody(catalog#:RS0002) was diluted at 1:20000



Immunohistochemical analysis of paraffin-embedded human-liver, antibody was diluted at 1:100