

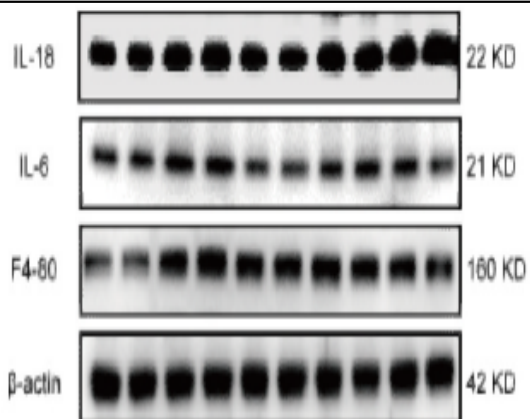
## IL-18R Polyclonal Antibody

<b>Catalog No :</b>	YT5472
<b>Reactivity :</b>	Human;Rat;Mouse;
<b>Applications :</b>	WB;ELISA
<b>Target :</b>	IL-18R
<b>Fields :</b>	>>Cytokine-cytokine receptor interaction;>>Viral protein interaction with cytokine and cytokine receptor;>>TNF signaling pathway;>>Inflammatory bowel disease
<b>Gene Name :</b>	IL18R1
<b>Protein Name :</b>	Interleukin-18 receptor 1
<b>Human Gene Id :</b>	8809
<b>Human Swiss Prot No :</b>	Q13478
<b>Mouse Swiss Prot No :</b>	Q61098
<b>Immunogen :</b>	The antiserum was produced against synthesized peptide derived from the Internal region of human IL18R1. AA range:231-280
<b>Specificity :</b>	IL-18R Polyclonal Antibody detects endogenous levels of IL-18R protein.
<b>Formulation :</b>	Liquid in PBS containing 50% glycerol, 0.5% BSA and 0.02% sodium azide.
<b>Source :</b>	Polyclonal, Rabbit,IgG
<b>Dilution :</b>	WB 1:500 - 1:2000. ELISA: 1:20000. Not yet tested in other applications.
<b>Purification :</b>	The antibody was affinity-purified from rabbit antiserum by affinity-chromatography using epitope-specific immunogen.
<b>Concentration :</b>	1 mg/ml

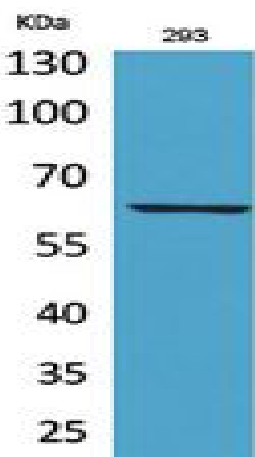
---

<b>Storage Stability :</b>	<u>-15°C to -25°C/1 year(Do not lower than -25°C)</u>
<b>Observed Band :</b>	<u>63kD</u>
<b>Cell Pathway :</b>	<u>Cytokine-cytokine receptor interaction;</u>
<b>Background :</b>	<p>The protein encoded by this gene is a cytokine receptor that belongs to the interleukin 1 receptor family. This receptor specifically binds interleukin 18 (IL18), and is essential for IL18 mediated signal transduction. IFN-alpha and IL12 are reported to induce the expression of this receptor in NK and T cells. This gene along with four other members of the interleukin 1 receptor family, including IL1R2, IL1R1, ILRL2 (IL-1Rrp2), and IL1RL1 (T1/ST2), form a gene cluster on chromosome 2q. Alternatively spliced transcript variants encoding different isoforms have been found for this gene. [provided by RefSeq, Sep 2013],</p>
<b>Function :</b>	<p>function:Receptor for interleukin 18 (IL-18). Binding to the agonist leads to the activation of NF-kappa-B.,miscellaneous:Does not bind interleukin 1 alpha (IL-1A) or interleukin 1 beta (IL-1B).,similarity:Belongs to the interleukin-1 receptor family.,similarity:Contains 1 TIR domain.,similarity:Contains 3 Ig-like C2-type (immunoglobulin-like) domains.,tissue specificity:Expressed in lung, leukocytes, spleen, liver, thymus, prostate, small intestine, colon, placenta, and heart, and is absent from brain, skeletal muscle, pancreas, and kidney. High level of expression in Hodgkin's disease cell lines.,</p>
<b>Subcellular Location :</b>	<u>Membrane ; Single-pass type I membrane protein .</u>
<b>Expression :</b>	<p>Highly expressed in leukocytes, spleen, lung. Also expressed, but at lower levels, in liver, small intestine, colon, prostate, thymus, placenta, and heart. Specifically coexpressed with IL18R1 in Th1 cells (PubMed:10925275, PubMed:11046021, PubMed:10653850).</p>
<b>Tag :</b>	<u>orthogonal</u>
<b>Sort :</b>	<u>8463</u>
<b>No4 :</b>	<u>1</u>
<b>Host :</b>	<u>Rabbit</u>
<b>Modifications :</b>	<u>Unmodified</u>

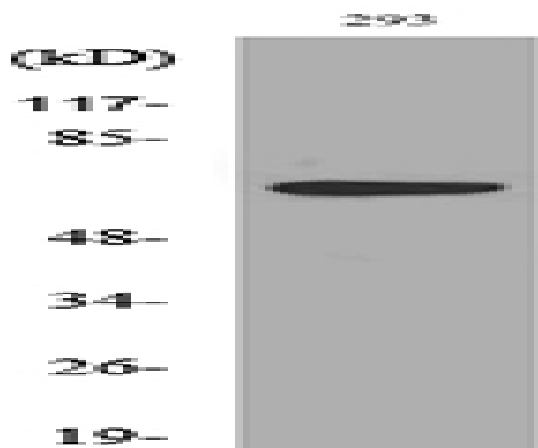
**Products Images**



Identification of CCR2 as a hub in septic myocardial injury and cardioprotection of silibinin  
 FREE RADICAL BIOLOGY AND MEDICINE Ye Tian WB Mouse cardiomyocytes



Western Blot analysis of 293 cells using IL-18R Polyclonal Antibody. Secondary antibody(catalog#:RS0002) was diluted at 1:20000



Western blot analysis of lysate from 293 cells, using IL18R1 Antibody.