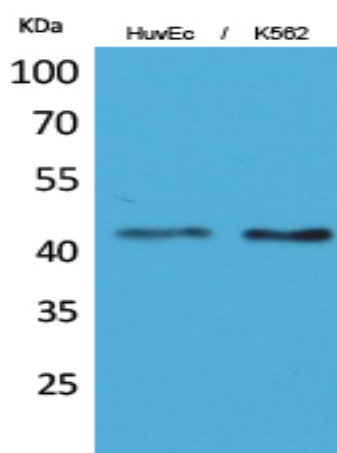


Layilin Polyclonal Antibody

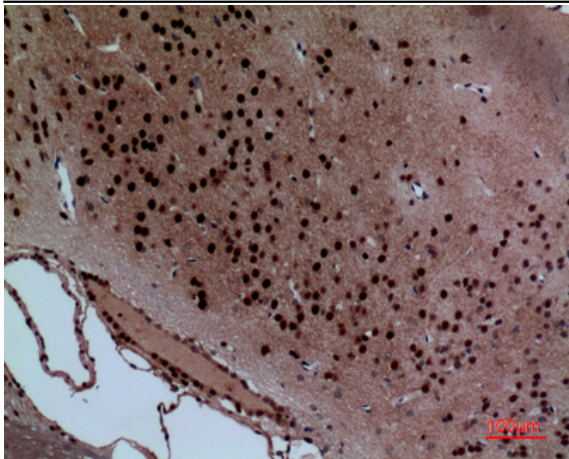
Catalog No :	YT5222
Reactivity :	Human;Mouse;Rat
Applications :	WB;IHC;IF;ELISA
Target :	Layilin
Gene Name :	LAYN
Protein Name :	Layilin
Human Gene Id :	143903
Human Swiss Prot No :	Q6UX15
Mouse Gene Id :	244864
Mouse Swiss Prot No :	Q8C351
Immunogen :	The antiserum was produced against synthesized peptide derived from the Internal region of human LAYN. AA range:71-120
Specificity :	Layilin Polyclonal Antibody detects endogenous levels of Layilin protein.
Formulation :	Liquid in PBS containing 50% glycerol, 0.5% BSA and 0.02% sodium azide.
Source :	Polyclonal, Rabbit,IgG
Dilution :	WB 1:500 - 1:2000. IHC: 1:100-300 ELISA: 1:20000.. IF 1:50-200
Purification :	The antibody was affinity-purified from rabbit antiserum by affinity-chromatography using epitope-specific immunogen.
Concentration :	1 mg/ml
Storage Stability :	-15°C to -25°C/1 year(Do not lower than -25°C)

Observed Band : 43kD**Background :** domain:The C-terminal domain interacts with the N-terminal domain of RDX.,function:Receptor for hyaluronate.,similarity:Contains 1 C-type lectin domain.,subcellular location:Colocalizes with TLN1 at the membrane ruffles.,subunit:Interacts with NF2, RDX and TLN1.,**Function :** domain:The C-terminal domain interacts with the N-terminal domain of RDX.,function:Receptor for hyaluronate.,similarity:Contains 1 C-type lectin domain.,subcellular location:Colocalizes with TLN1 at the membrane ruffles.,subunit:Interacts with NF2, RDX and TLN1.,**Subcellular Location :** Membrane ; Single-pass type I membrane protein . Colocalizes with TLN1 at the membrane ruffles. .**Expression :** Brain,**Sort :** 9137**No4 :** 1**Host :** Rabbit**Modifications :** Unmodified

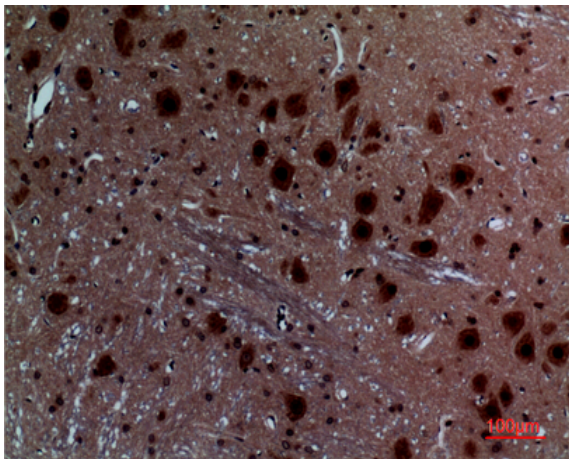
Products Images



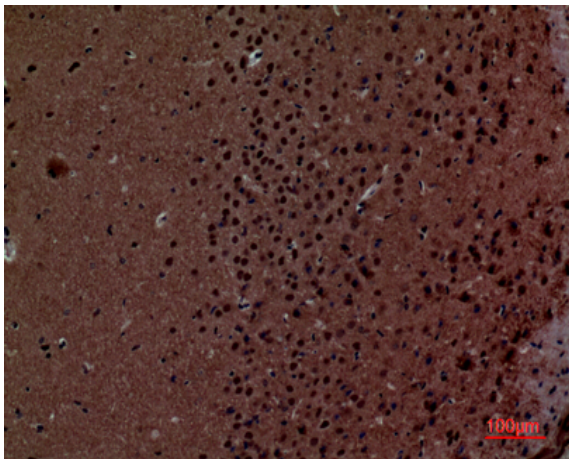
Western blot analysis of HuvEc, K562 cells using Layilin Polyclonal Antibody. Secondary antibody(catalog#:RS0002) was diluted at 1:20000



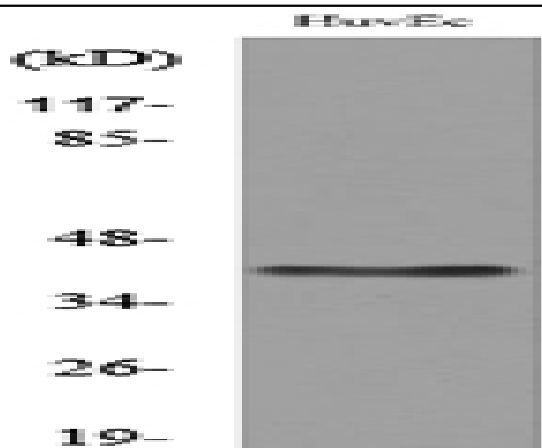
Immunohistochemical analysis of paraffin-embedded rat-brain, antibody was diluted at 1:100



Immunohistochemical analysis of paraffin-embedded rat-brain, antibody was diluted at 1:100



Immunohistochemical analysis of paraffin-embedded mouse-brain, antibody was diluted at 1:100



Western blot analysis of lysate from HUVEC cells, using LAYN Antibody.