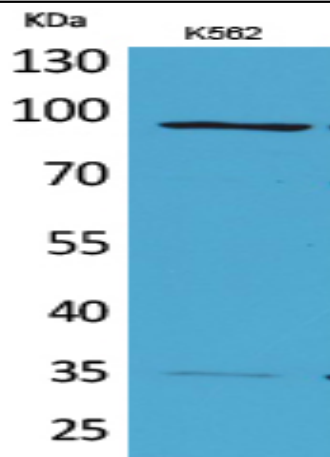


MCM3 Polyclonal Antibody

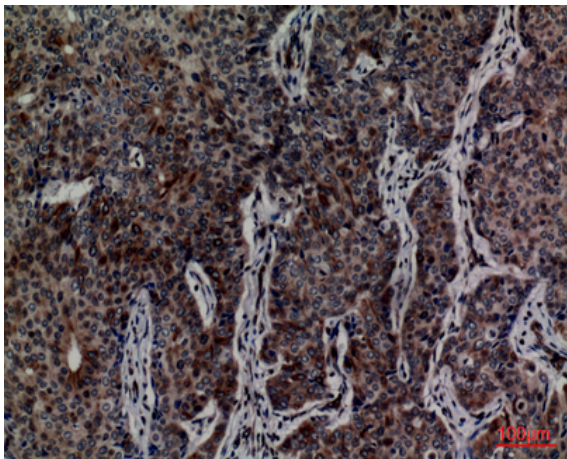
Catalog No :	YT5217
Reactivity :	Human;Mouse
Applications :	WB;IHC;IF;ELISA
Target :	MCM3
Fields :	>>DNA replication;>>Cell cycle
Gene Name :	MCM3
Protein Name :	DNA replication licensing factor MCM3
Human Gene Id :	4172
Human Swiss Prot No :	P25205
Mouse Swiss Prot No :	P25206
Immunogen :	The antiserum was produced against synthesized peptide derived from the Internal region of human MCM3. AA range:641-690
Specificity :	MCM3 Polyclonal Antibody detects endogenous levels of MCM3 protein.
Formulation :	Liquid in PBS containing 50% glycerol, 0.5% BSA and 0.02% sodium azide.
Source :	Polyclonal, Rabbit,IgG
Dilution :	WB 1:500 - 1:2000. IHC: 1:100-300 ELISA: 1:20000.. IF 1:50-200
Purification :	The antibody was affinity-purified from rabbit antiserum by affinity-chromatography using epitope-specific immunogen.
Concentration :	1 mg/ml
Storage Stability :	-15°C to -25°C/1 year(Do not lower than -25°C)

Observed Band :	89kD
Cell Pathway :	DNA replication;Cell_Cycle_G1S;Cell_Cycle_G2M_DNA;
Background :	<p>The protein encoded by this gene is one of the highly conserved mini-chromosome maintenance proteins (MCM) that are involved in the initiation of eukaryotic genome replication. The hexameric protein complex formed by MCM proteins is a key component of the pre-replication complex (pre_RC) and may be involved in the formation of replication forks and in the recruitment of other DNA replication related proteins. This protein is a subunit of the protein complex that consists of MCM2-7. It has been shown to interact directly with MCM5/CDC46. This protein also interacts with and is acetylated by MCM3AP, a chromatin-associated acetyltransferase. The acetylation of this protein inhibits the initiation of DNA replication and cell cycle progression. Two transcript variants encoding different isoforms have been found for this gene. [provided by RefSeq, Jul 2012],</p>
Function :	<p>function:Acts as a factor that allows the DNA to undergo a single round of replication per cell cycle. Required for DNA replication and cell proliferation.,miscellaneous:Associated with the replication-specific DNA polymerase alpha.,PTM:Phosphorylated upon DNA damage, probably by ATM or ATR.,similarity:Belongs to the MCM family.,similarity:Contains 1 MCM domain.,</p>
Subcellular Location :	Nucleus . Chromosome . Associated with chromatin before the formation of nuclei and detaches from it as DNA replication progresses. .
Expression :	Cervix,Coronary artery,Epithelium,Lymph,Osteosarcoma,Pancre
Tag :	hot
Sort :	9465
No4 :	1
Host :	Rabbit
Modifications :	Unmodified

Products Images



Western Blot analysis of K562 cells using MCM3 Polyclonal Antibody. Secondary antibody(catalog#:RS0002) was diluted at 1:20000



Immunohistochemical analysis of paraffin-embedded human-breast-cancer, antibody was diluted at 1:100