

P2X3 Polyclonal Antibody

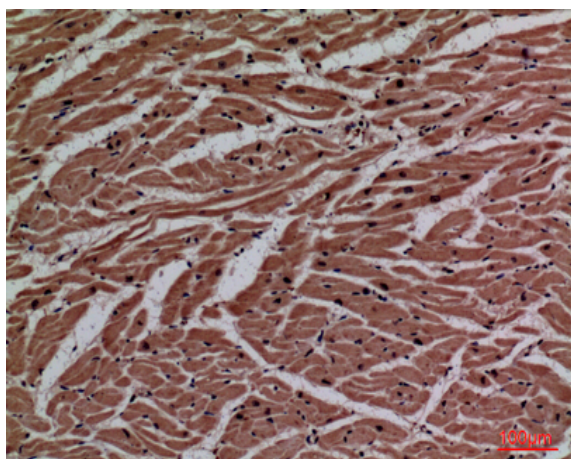
Catalog No :	YT5211
Reactivity :	Human;Mouse;Rat
Applications :	WB;IHC;IF;ELISA
Target :	P2X3
Fields :	>>Calcium signaling pathway;>>Neuroactive ligand-receptor interaction;>>Taste transduction
Gene Name :	P2RX3
Protein Name :	P2X purinoceptor 3
Human Gene Id :	5024
Human Swiss Prot No :	P56373
Mouse Gene Id :	228139
Mouse Swiss Prot No :	Q3UR32
Rat Gene Id :	81739
Rat Swiss Prot No :	P49654
Immunogen :	The antiserum was produced against synthesized peptide derived from the Internal region of human P2RX3. AA range:81-130
Specificity :	P2X3 Polyclonal Antibody detects endogenous levels of P2X3 protein.
Formulation :	Liquid in PBS containing 50% glycerol, 0.5% BSA and 0.02% sodium azide.
Source :	Polyclonal, Rabbit,IgG
Dilution :	WB 1:500 - 1:2000. IHC: 1:100-300 ELISA: 1:20000.. IF 1:50-200

Purification :	The antibody was affinity-purified from rabbit antiserum by affinity-chromatography using epitope-specific immunogen.
Concentration :	1 mg/ml
Storage Stability :	-15°C to -25°C/1 year(Do not lower than -25°C)
Observed Band :	44kD
Cell Pathway :	Calcium;Neuroactive ligand-receptor interaction;
Background :	The product of this gene belongs to the family of purinoceptors for ATP. This receptor functions as a ligand-gated ion channel and may transduce ATP-evoked nociceptor activation. Mouse studies suggest that this receptor is important for peripheral pain responses, and also participates in pathways controlling urinary bladder volume reflexes. It is possible that the development of selective antagonists for this receptor may have a therapeutic potential in pain relief and in the treatment of disorders of urine storage. [provided by RefSeq, Jul 2008],
Function :	function:Receptor for ATP that acts as a ligand gated ion channel.,online information:P2X receptor entry,similarity:Belongs to the P2X receptor family.,subunit:Homo- or heteropolymers.,
Subcellular Location :	Cell membrane ; Multi-pass membrane protein .
Expression :	Heart,
Sort :	11393
No4 :	1
Host :	Rabbit
Modifications :	Unmodified

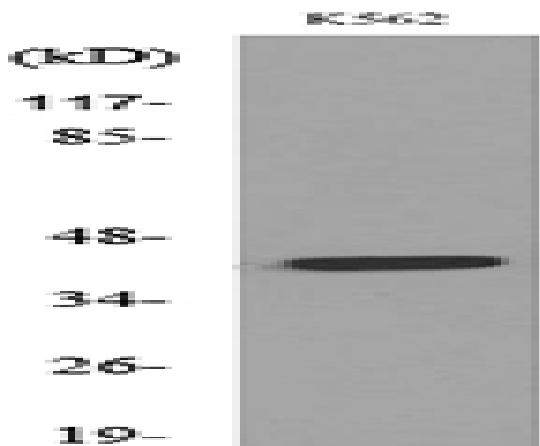
Products Images



Western Blot analysis of K562 cells using P2X3 Polyclonal Antibody. Secondary antibody(catalog#:RS0002) was diluted at 1:20000



Immunohistochemical analysis of paraffin-embedded human-heart, antibody was diluted at 1:100



Western blot analysis of lysate from K562 cells, using P2RX3 Antibody.