

## MIP-1 $\beta$ Polyclonal Antibody

<b>Catalog No :</b>	YT5207
<b>Reactivity :</b>	Human;Rat;Mouse;
<b>Applications :</b>	WB;IHC
<b>Target :</b>	MIP-1 $\beta$
<b>Fields :</b>	>>Cytokine-cytokine receptor interaction;>>Viral protein interaction with cytokine and cytokine receptor;>>Chemokine signaling pathway;>>NF-kappa B signaling pathway;>>Toll-like receptor signaling pathway;>>Cytosolic DNA-sensing pathway;>>Human cytomegalovirus infection
<b>Gene Name :</b>	CCL4
<b>Protein Name :</b>	C-C motif chemokine 4
<b>Human Gene Id :</b>	388372
<b>Human Swiss Prot No :</b>	P13236
<b>Mouse Swiss Prot No :</b>	P14097
<b>Immunogen :</b>	The antiserum was produced against synthesized peptide derived from the Internal region of human CCL4. AA range:41-90
<b>Specificity :</b>	MIP-1 $\beta$ Polyclonal Antibody detects endogenous levels of MIP-1 $\beta$ protein.
<b>Formulation :</b>	Liquid in PBS containing 50% glycerol, 0.5% BSA and 0.02% sodium azide.
<b>Source :</b>	Polyclonal, Rabbit,IgG
<b>Dilution :</b>	WB 1:500-2000;IHC 1:50-300
<b>Purification :</b>	The antibody was affinity-purified from rabbit antiserum by affinity-chromatography using epitope-specific immunogen.
<b>Concentration :</b>	1 mg/ml

**Storage Stability :** -15°C to -25°C/1 year(Do not lower than -25°C)

**Observed Band :** 16kD

**Background :** The protein encoded by this gene is a mitogen-inducible monokine and is one of the major HIV-suppressive factors produced by CD8+ T-cells. The encoded protein is secreted and has chemokinetic and inflammatory functions. [provided by RefSeq, Dec 2012],

**Function :** alternative products:CCL4L1 and CCL4L2 genes differ in their non-coding regions. Thus, alternative splicing events differ between the two genes,caution:Was originally (PubMed:9521068) thought to be a ligand for CCR8.,function:Chemokine that induces chemotaxis of cells expressing CCR5 or CCR1. Inhibits HIV replication in peripheral blood monocytes that express CCR5.,function:Monokine with inflammatory and chemokinetic properties. Binds to CCR5. One of the major HIV-suppressive factors produced by CD8+ T-cells. Recombinant MIP-1-beta induces a dose-dependent inhibition of different strains of HIV-1, HIV-2, and simian immunodeficiency virus (SIV). The processed form MIP-1-beta(3-69) retains the abilities to induce down-modulation of surface expression of the chemokine receptor CCR5 and to inhibit the CCR5-mediated entry of HIV-1 in T-cells. MIP-1-beta(3-69) is also a ligand for CCR1 and CCR

**Subcellular Location :** Secreted.

**Expression :** Blood,Brain,Lung,Natural killer cell,T-cell,

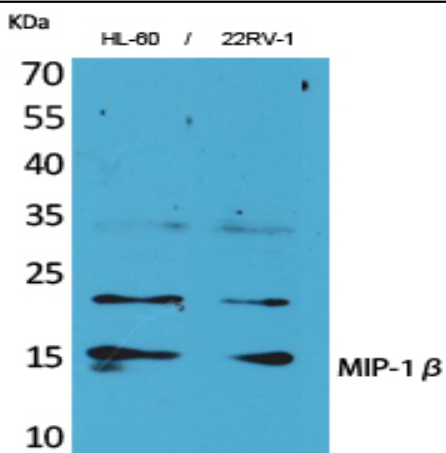
**Sort :** 9649

**No4 :** 1

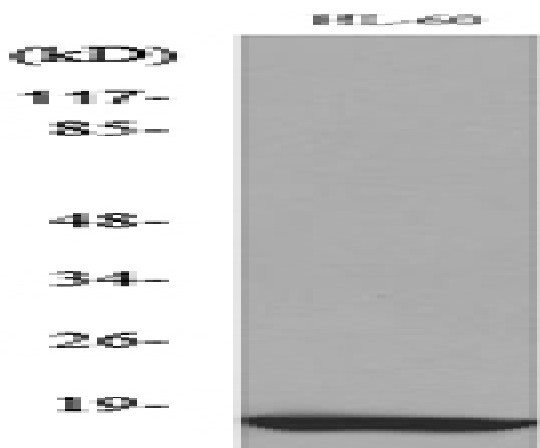
**Host :** Rabbit

**Modifications :** Unmodified

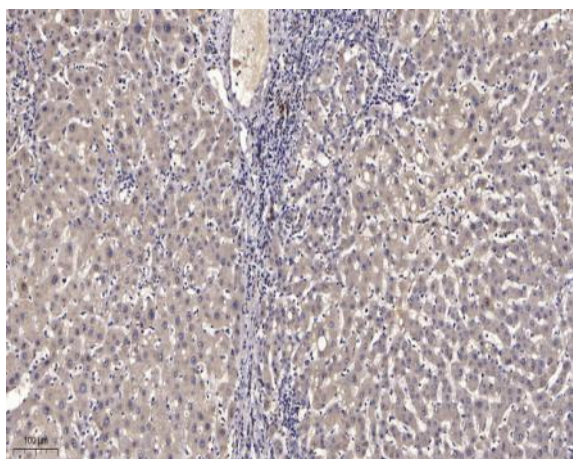
## Products Images



Western Blot analysis of HL-60, 22RV-1 cells using MIP-1 $\beta$  Polyclonal Antibody. Secondary antibody(catalog#:RS0002) was diluted at 1:20000



Western blot analysis of lysate from HL-60 cells, using CCL4 Antibody.



Immunohistochemical analysis of paraffin-embedded human liver cancer. 1, Antibody was diluted at 1:200(4° overnight). 2, Tris-EDTA,pH9.0 was used for antigen retrieval. 3,Secondary antibody was diluted at 1:200(room temperature, 45min).