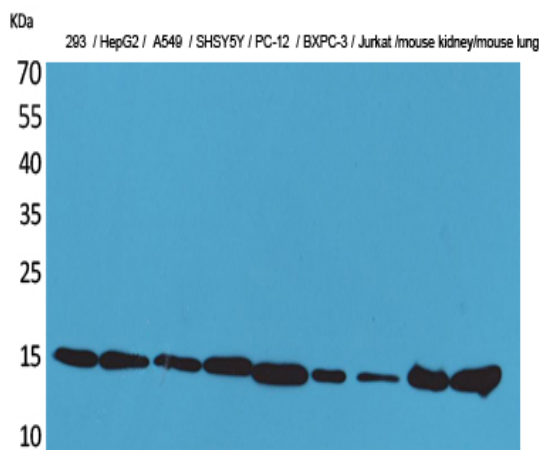


CyPA Polyclonal Antibody

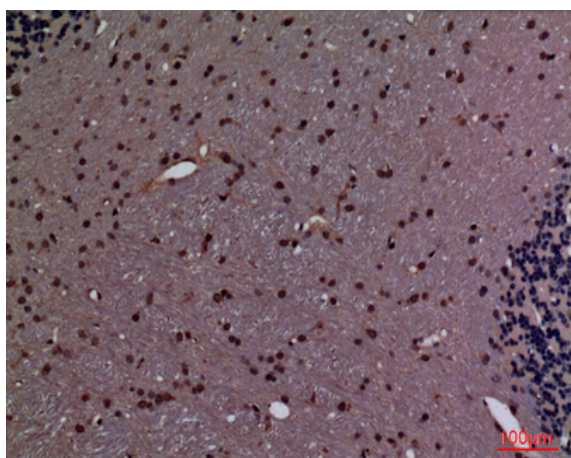
Catalog No :	YT5197
Reactivity :	Human;Mouse;Rat
Applications :	WB;IHC;IF;ELISA
Target :	CyPA
Fields :	>>Viral life cycle - HIV-1;>>Necroptosis
Gene Name :	PPIA
Protein Name :	Peptidyl-prolyl cis-trans isomerase A
Human Gene Id :	5478
Human Swiss Prot No :	P62937
Mouse Gene Id :	268373
Mouse Swiss Prot No :	P17742
Rat Gene Id :	100360977
Rat Swiss Prot No :	P10111
Immunogen :	The antiserum was produced against synthesized peptide derived from the Internal region of human PPIA. AA range:51-100
Specificity :	CyPA Polyclonal Antibody detects endogenous levels of CyPA protein.
Formulation :	Liquid in PBS containing 50% glycerol, 0.5% BSA and 0.02% sodium azide.
Source :	Polyclonal, Rabbit,IgG
Dilution :	WB 1:500 - 1:2000. IHC: 1:100-300 ELISA: 1:20000.. IF 1:50-200

Purification :	The antibody was affinity-purified from rabbit antiserum by affinity-chromatography using epitope-specific immunogen.
Concentration :	1 mg/ml
Storage Stability :	-15°C to -25°C/1 year(Do not lower than -25°C)
Observed Band :	18kD
Background :	This gene encodes a member of the peptidyl-prolyl cis-trans isomerase (PPIase) family. PPIases catalyze the cis-trans isomerization of proline imidic peptide bonds in oligopeptides and accelerate the folding of proteins. The encoded protein is a cyclosporin binding-protein and may play a role in cyclosporin A-mediated immunosuppression. The protein can also interact with several HIV proteins, including p55 gag, Vpr, and capsid protein, and has been shown to be necessary for the formation of infectious HIV virions. Multiple pseudogenes that map to different chromosomes have been reported. [provided by RefSeq, Jul 2008],
Function :	catalytic activity:Peptidylproline (omega=180) = peptidylproline (omega=0).,enzyme regulation:Binds cyclosporin A (CsA). CsA mediates some of its effects via an inhibitory action on PPIase.,function:PPIases accelerate the folding of proteins.,function:PPIases accelerate the folding of proteins. It catalyzes the cis-trans isomerization of proline imidic peptide bonds in oligopeptides.,online information:Cyclophilin entry,similarity:Belongs to the cyclophilin-type PPIase family.,similarity:Belongs to the cyclophilin-type PPIase family. PPIase A subfamily.,similarity:Contains 1 PPIase cyclophilin-type domain.,subunit:Interacts with HIV-1 Capsid protein.,
Subcellular Location :	Cytoplasm . Secreted . Nucleus . Secretion occurs in response to oxidative stress in vascular smooth muscle through a vesicular secretory pathway that includes Rho GTPase signaling, actin remodeling, and myosin II activation. .
Expression :	Blood,Bone marrow,Brain,Cajal-Retzius cell,Cervix,Colon,Epithelium,Fetal br
Sort :	4824
No4 :	1
Host :	Rabbit
Modifications :	Unmodified

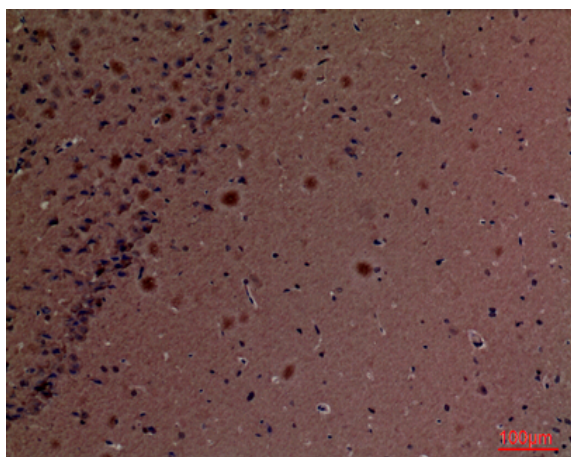
Products Images



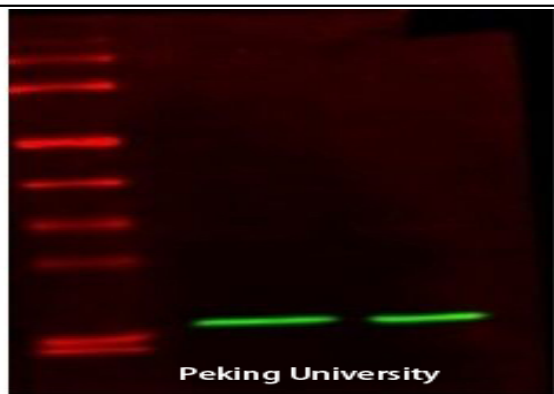
Western Blot analysis of 293, HepG2, A549, SHSY5Y, PC-12, BXP-3, Jurkat, mouse kidney, mouse lung cells using CyPA Polyclonal Antibody. Secondary antibody(catalog#:RS0002) was diluted at 1:20000



Immunohistochemical analysis of paraffin-embedded rat-brain, antibody was diluted at 1:100



Immunohistochemical analysis of paraffin-embedded mouse-brain, antibody was diluted at 1:100



Ppia

The picture was kindly provided by our customer