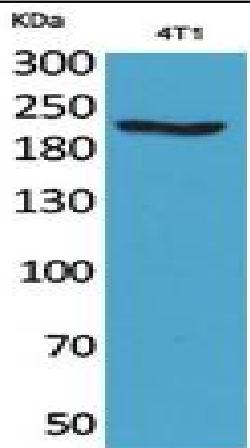


MYH-pan Polyclonal Antibody

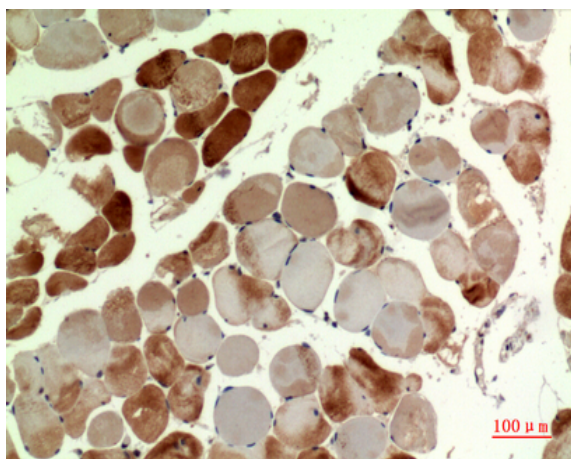
Catalog No :	YT5427
Reactivity :	Human;Mouse;Rat
Applications :	WB;IHC;IF;ELISA
Target :	MYH-pan
Gene Name :	MYH1/MYH2/MYH3/PTPRJ/MYH6/MYH7/MYH8
Protein Name :	Myosin-1/Myosin-2/Myosin-3/Receptor-type tyrosine-protein phosphatase eta/Myosin-6/Myosin-7/Myosin-8
Human Gene Id :	4619/4620/4621/5795/4624/4625/4626
Human Swiss Prot No :	P12882/Q9UKX2/P11055/Q9Y623/P13533/P12883/P13535
Mouse Gene Id :	17879/17883/17884
Rat Gene Id :	24583/360543
Rat Swiss Prot No :	P12847/Q29RW1
Immunogen :	The antiserum was produced against synthesized peptide derived from human MYH-pan around the non-acetylation site of Lys1394. AA range:1351-1400
Specificity :	MYH-pan Polyclonal Antibody detects endogenous levels of MYH-pan protein only when acetylation at K1394.
Formulation :	Liquid in PBS containing 50% glycerol, 0.5% BSA and 0.02% sodium azide.
Source :	Polyclonal, Rabbit,IgG
Dilution :	WB 1:500 - 1:2000. IHC: 1:100-1:300. ELISA: 1:20000.. IF 1:50-200
Purification :	The antibody was affinity-purified from rabbit antiserum by affinity-chromatography using epitope-specific immunogen.

Concentration :	1 mg/ml
Storage Stability :	-15°C to -25°C/1 year(Do not lower than -25°C)
Observed Band :	225kD
Cell Pathway :	Tight junction;Viral myocarditis;
Background :	<p>Myosin is a major contractile protein which converts chemical energy into mechanical energy through the hydrolysis of ATP. Myosin is a hexameric protein composed of a pair of myosin heavy chains (MYH) and two pairs of nonidentical light chains. Myosin heavy chains are encoded by a multigene family. In mammals at least 10 different myosin heavy chain (MYH) isoforms have been described from striated, smooth, and nonmuscle cells. These isoforms show expression that is spatially and temporally regulated during development. [provided by RefSeq, Jul 2008],</p>
Function :	<p>domain:The rodlike tail sequence is highly repetitive, showing cycles of a 28-residue repeat pattern composed of 4 heptapeptides, characteristic for alpha-helical coiled coils.,function:Muscle contraction.,miscellaneous:Each myosin heavy chain can be split into 1 light meromyosin (LMM) and 1 heavy meromyosin (HMM). It can later be split further into 2 globular subfragments (S1) and 1 rod-shaped subfragment (S2).,similarity:Contains 1 IQ domain.,similarity:Contains 1 myosin head-like domain.,subcellular location:Thick filaments of the myofibrils.,subunit:Muscle myosin is a hexameric protein that consists of 2 heavy chain subunits (MHC), 2 alkali light chain subunits (MLC) and 2 regulatory light chain subunits (MLC-2).,</p>
Subcellular Location :	Cytoplasm, myofibril. Thick filaments of the myofibrils.
Expression :	Skeletal muscle,
Sort :	10467
No4 :	1
Host :	Rabbit
Modifications :	Unmodified

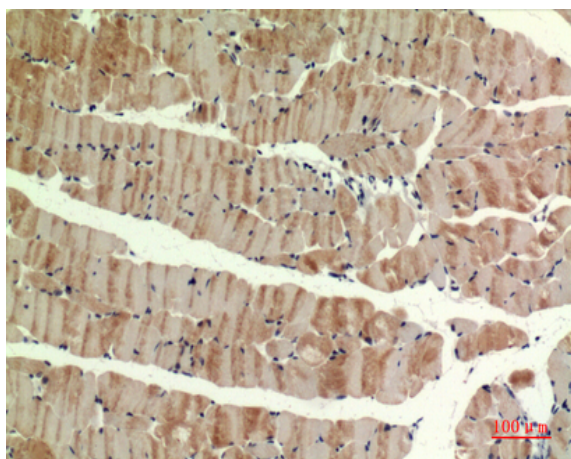
Products Images



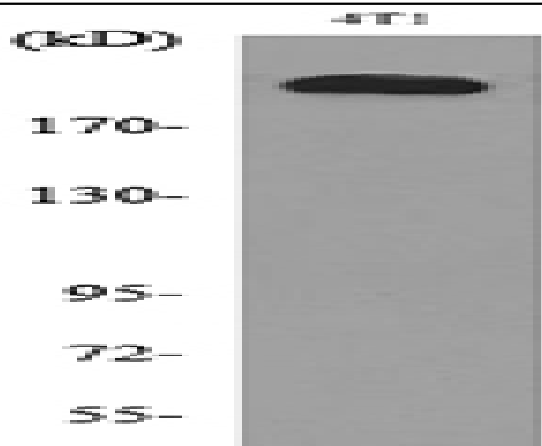
Western Blot analysis of 4T1 cells using MYH-pan Polyclonal Antibody. Secondary antibody(catalog#:RS0002) was diluted at 1:20000



Immunohistochemical analysis of paraffin-embedded human-muscle, antibody was diluted at 1:100



Immunohistochemical analysis of paraffin-embedded mouse-muscle, antibody was diluted at 1:100



Western blot analysis of lysate from 4T1 cells, using MYH-pan Antibody.