

HoxD3 Polyclonal Antibody

Catalog No :	YT5195
Reactivity :	Human;Mouse;Rat
Applications :	WB;IHC;IF;ELISA
Target :	HoxD3
Gene Name :	HOXD3
Protein Name :	Homeobox protein Hox-D3
Human Gene Id :	3232
Human Swiss Prot No :	P31249
Mouse Gene Id :	15434
Mouse Swiss Prot No :	P09027
Rat Swiss Prot No :	P18867
Immunogen :	The antiserum was produced against synthesized peptide derived from the Internal region of human HOXD3. AA range:211-260
Specificity :	HoxD3 Polyclonal Antibody detects endogenous levels of HoxD3 protein.
Formulation :	Liquid in PBS containing 50% glycerol, 0.5% BSA and 0.02% sodium azide.
Source :	Polyclonal, Rabbit,IgG
Dilution :	WB 1:500 - 1:2000. IHC: 1:100-300 ELISA: 1:20000.. IF 1:50-200
Purification :	The antibody was affinity-purified from rabbit antiserum by affinity-chromatography using epitope-specific immunogen.
Concentration :	1 mg/ml

Storage Stability : -15°C to -25°C/1 year(Do not lower than -25°C)

Observed Band : 45kD

Background : This gene belongs to the homeobox family of genes. The homeobox genes encode a highly conserved family of transcription factors that play an important role in morphogenesis in all multicellular organisms. Mammals possess four similar homeobox gene clusters, HOXA, HOXB, HOXC and HOXD, located on different chromosomes, consisting of 9 to 11 genes arranged in tandem. This gene is one of several homeobox HOXD genes located at 2q31-2q37 chromosome regions. Deletions that removed the entire HOXD gene cluster or 5' end of this cluster have been associated with severe limb and genital abnormalities. The protein encoded by this gene may play a role in the regulation of cell adhesion processes. [provided by RefSeq, Jul 2008],

Function : caution:It is uncertain whether Met-1 or Met-17 is the initiator.,function:Sequence-specific transcription factor which is part of a developmental regulatory system that provides cells with specific positional identities on the anterior-posterior axis.,similarity:Belongs to the Antp homeobox family.,similarity:Contains 1 homeobox DNA-binding domain.,

Subcellular Location : Nucleus.

Expression : Brain,Lung,

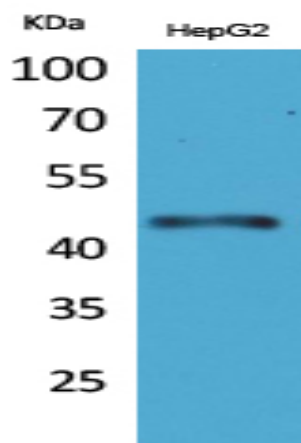
Sort : 7752

No4 : 1

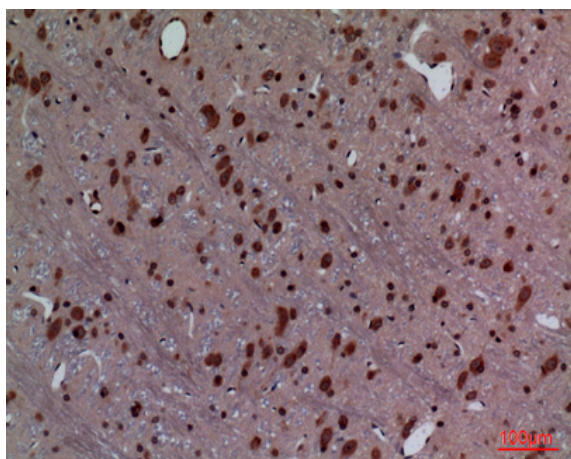
Host : Rabbit

Modifications : Unmodified

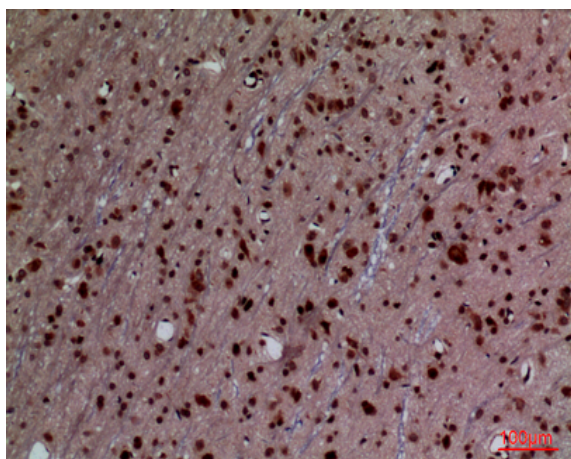
Products Images



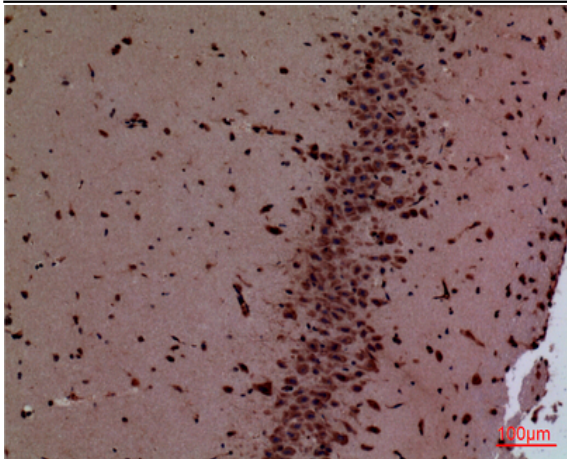
Western Blot analysis of HepG2 cells using HoxD3 Polyclonal Antibody. Secondary antibody(catalog#:RS0002) was diluted at 1:20000 cells nucleus extracted by Minute TM Cytoplasmic and Nuclear Fractionation kit (SC-003, Inventbiotech, MN, USA).



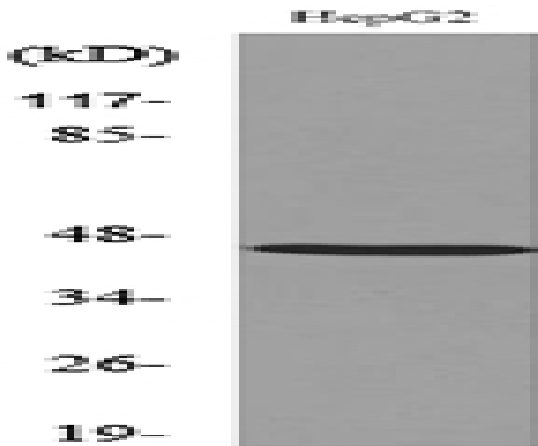
Immunohistochemical analysis of paraffin-embedded rat-brain, antibody was diluted at 1:100



Immunohistochemical analysis of paraffin-embedded rat-brain, antibody was diluted at 1:100



Immunohistochemical analysis of paraffin-embedded mouse-brain, antibody was diluted at 1:100



Western blot analysis of lysate from HepG2 cells, using HOXD3 Antibody.