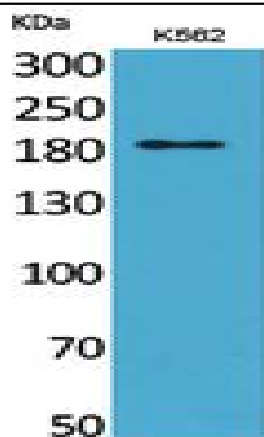


CD169 Polyclonal Antibody

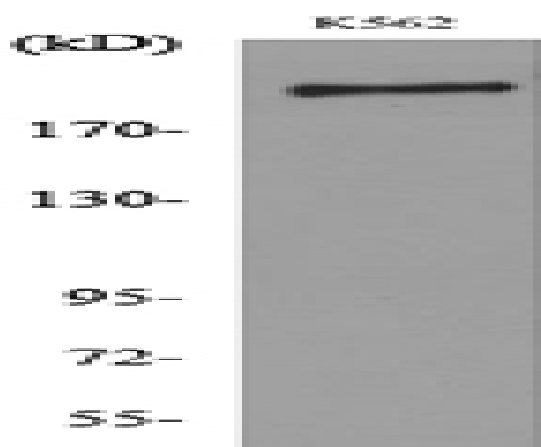
Catalog No :	YT5399
Reactivity :	Human;Rat;Mouse;
Applications :	WB;ELISA
Target :	CD169
Fields :	>>Cell adhesion molecules
Gene Name :	SIGLEC1
Protein Name :	Sialoadhesin
Human Gene Id :	6614
Human Swiss Prot No :	Q9BZZ2
Mouse Gene Id :	20612
Mouse Swiss Prot No :	Q62230
Immunogen :	The antiserum was produced against synthesized peptide derived from the Internal region of human SIGLEC1. AA range:1321-1370
Specificity :	CD169 Polyclonal Antibody detects endogenous levels of CD169 protein.
Formulation :	Liquid in PBS containing 50% glycerol, 0.5% BSA and 0.02% sodium azide.
Source :	Polyclonal, Rabbit,IgG
Dilution :	WB 1:500 - 1:2000. ELISA: 1:20000. Not yet tested in other applications.
Purification :	The antibody was affinity-purified from rabbit antiserum by affinity-chromatography using epitope-specific immunogen.
Concentration :	1 mg/ml

Storage Stability :	-15°C to -25°C/1 year(Do not lower than -25°C)
Observed Band :	190kD
Cell Pathway :	Cell adhesion molecules (CAMs);
Background :	<p>This gene encodes a member of the immunoglobulin superfamily. The encoded protein is a lectin-like adhesion molecule that binds glycoconjugate ligands on cell surfaces in a sialic acid-dependent manner. It is a type I transmembrane protein expressed only by a subpopulation of macrophages and is involved in mediating cell-cell interactions. Alternative splicing produces a transcript variant encoding an isoform that is soluble rather than membrane-bound; however, the full-length nature of this variant has not been determined. [provided by RefSeq, Jul 2008],</p>
Function :	<p>alternative products:Additional isoforms seem to exist,function:Macrophage-restricted adhesion molecule that mediates sialic-acid dependent binding to lymphocytes, including granulocytes, monocytes, natural killer cells, B-cells and CD8 T-cells. Preferentially binds to alpha-2,3-linked sialic acid (By similarity). Binds to SPN/CD43 on T-cells (By similarity). May play a role in hemopoiesis.,online information:Siglec-1,similarity:Belongs to the immunoglobulin superfamily. SIGLEC (sialic acid binding Ig-like lectin) family.,similarity:Contains 1 Ig-like V-type (immunoglobulin-like) domain.,similarity:Contains 16 Ig-like C2-type (immunoglobulin-like) domains.,tissue specificity:Expressed by macrophages in various tissues. High levels are found in spleen, lymph node, perivascular macrophages in brain and lower levels in bone marrow, liver Kupffer cells and lamina propria of colon and lung. A</p>
Subcellular Location :	[Isoform 1]: Cell membrane; Single-pass type I membrane protein.; [Isoform 2]: Secreted.
Expression :	<p>Expressed by macrophages in various tissues. High levels are found in spleen, lymph node, perivascular macrophages in brain and lower levels in bone marrow, liver Kupffer cells and lamina propria of colon and lung. Also expressed by inflammatory macrophages in rheumatoid arthritis.</p>
Sort :	3425
No4 :	1
Host :	Rabbit
Modifications :	Unmodified

Products Images



Western Blot analysis of K562 cells using CD169 Polyclonal Antibody. Secondary antibody(catalog#:RS0002) was diluted at 1:20000



Western blot analysis of lysate from K562 cells, using SIGLEC1 Antibody.