

CD66e Polyclonal Antibody

Catalog No :	YT5172
Reactivity :	Human;Mouse
Applications :	WB;IHC;IF;ELISA
Target :	CEA
Gene Name :	CEACAM5
Protein Name :	Carcinoembryonic antigen-related cell adhesion molecule 5
Human Gene Id :	1048
Human Swiss Prot No :	P06731
Mouse Swiss Prot No :	Q3UUK2
Immunogen :	The antiserum was produced against synthesized peptide derived from the Internal region of human CEACAM5. AA range:481-530
Specificity :	CD66e Polyclonal Antibody detects endogenous levels of CD66e protein.
Formulation :	Liquid in PBS containing 50% glycerol, 0.5% BSA and 0.02% sodium azide.
Source :	Polyclonal, Rabbit,IgG
Dilution :	WB 1:500 - 1:2000. IHC: 1:100-300 ELISA: 1:20000.. IF 1:50-200
Purification :	The antibody was affinity-purified from rabbit antiserum by affinity-chromatography using epitope-specific immunogen.
Concentration :	1 mg/ml
Storage Stability :	-15°C to -25°C/1 year(Do not lower than -25°C)
Observed Band :	76kD

Background : This gene encodes a cell surface glycoprotein that represents the founding member of the carcinoembryonic antigen (CEA) family of proteins. The encoded protein is used as a clinical biomarker for gastrointestinal cancers and may promote tumor development through its role as a cell adhesion molecule. Additionally, the encoded protein may regulate differentiation, apoptosis, and cell polarity. This gene is present in a CEA family gene cluster on chromosome 19. Alternative splicing results in multiple transcript variants. [provided by RefSeq, Jul 2015],

Function : function:Cell surface glycoprotein that plays a role in cell adhesion and in intracellular signaling. Receptor for E.coli Dr adhesins.,PTM:Complex immunoreactive glycoprotein with a MW of 180 kDa comprising 60% carbohydrate.,similarity:Belongs to the immunoglobulin superfamily. CEA family.,similarity:Contains 7 Ig-like (immunoglobulin-like) domains.,subunit:Homodimer. Binding of E.coli Dr adhesins leads to dissociation of the homodimer.,tissue specificity:Found in adenocarcinomas of endodermally derived digestive system epithelium and fetal colon.,

Subcellular Location : Cell membrane ; Lipid-anchor, GPI-anchor . Apical cell membrane . Cell surface . Localized to the apical glycocalyx surface. .

Expression : Expressed in columnar epithelial and goblet cells of the colon (at protein level) (PubMed:10436421). Found in adenocarcinomas of endodermally derived digestive system epithelium and fetal colon.

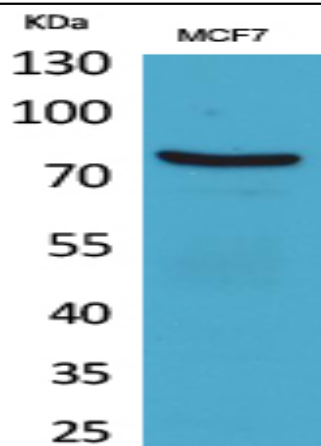
Sort : 3643

No4 : 1

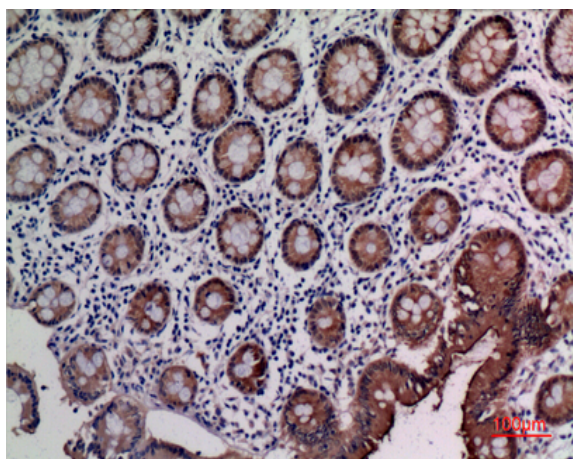
Host : Rabbit

Modifications : Unmodified

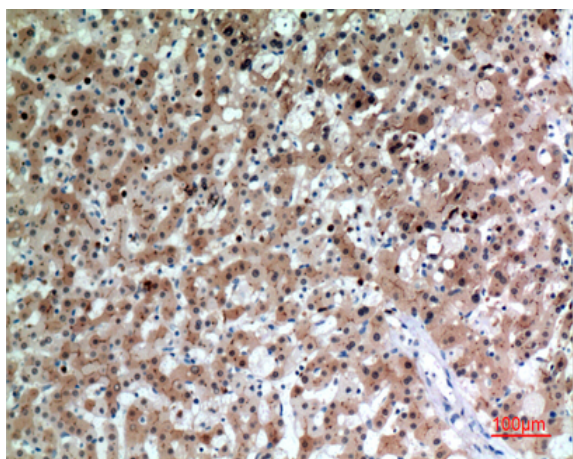
Products Images



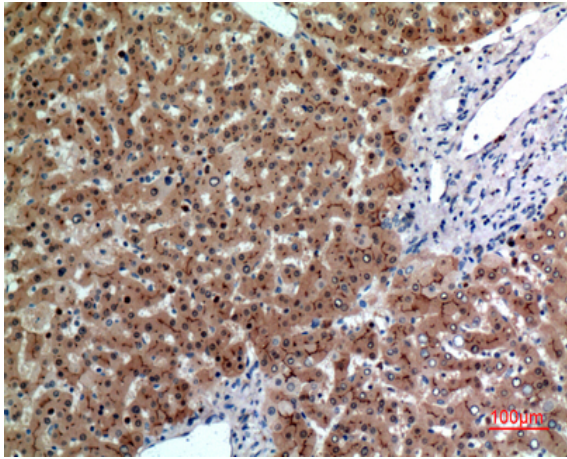
Western Blot analysis of MCF7 cells using CD66e Polyclonal Antibody. Secondary antibody(catalog#:RS0002) was diluted at 1:20000



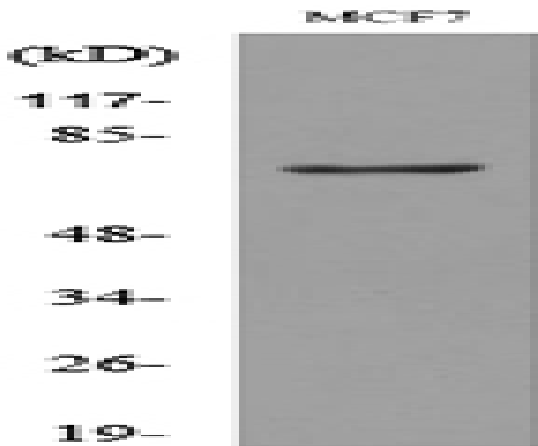
Immunohistochemical analysis of paraffin-embedded human-colon, antibody was diluted at 1:100



Immunohistochemical analysis of paraffin-embedded human-liver, antibody was diluted at 1:100



Immunohistochemical analysis of paraffin-embedded human-liver, antibody was diluted at 1:100



Western blot analysis of lysate from MCF7 cells, using CEACAM5 Antibody.