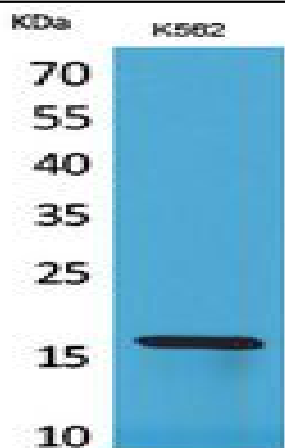


CRBP II Polyclonal Antibody

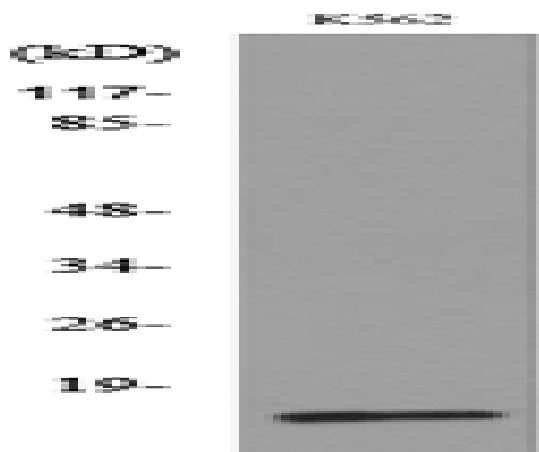
Catalog No :	YT5387
Reactivity :	Human;Mouse;Rat
Applications :	WB;ELISA
Target :	CRBP II
Fields :	>>Vitamin digestion and absorption
Gene Name :	RBP2
Protein Name :	Retinol-binding protein 2
Human Gene Id :	5948
Human Swiss Prot No :	P50120
Mouse Gene Id :	19660
Mouse Swiss Prot No :	Q08652
Rat Gene Id :	24710
Rat Swiss Prot No :	P06768
Immunogen :	The antiserum was produced against synthesized peptide derived from the Internal region of human RBP2. AA range:71-120
Specificity :	CRBP II Polyclonal Antibody detects endogenous levels of CRBP II protein.
Formulation :	Liquid in PBS containing 50% glycerol, 0.5% BSA and 0.02% sodium azide.
Source :	Polyclonal, Rabbit,IgG
Dilution :	WB 1:500 - 1:2000. ELISA: 1:20000. Not yet tested in other applications.

Purification :	The antibody was affinity-purified from rabbit antiserum by affinity-chromatography using epitope-specific immunogen.
Concentration :	1 mg/ml
Storage Stability :	-15°C to -25°C/1 year(Do not lower than -25°C)
Observed Band :	15kD
Background :	retinol binding protein 2(RBP2) Homo sapiens This gene encodes an abundant protein present in the small intestinal epithelium. It is thought to participate in the uptake and/or intracellular metabolism of vitamin A. Vitamin A is a fat-soluble vitamin necessary for growth, reproduction, differentiation of epithelial tissues, and vision. This protein may also modulate the supply of retinoic acid to the nuclei of endometrial cells during the menstrual cycle. [provided by RefSeq, Aug 2015],
Function :	domain:Forms a beta-barrel structure that accommodates hydrophobic ligands in its interior.,function:Intracellular transport of retinol.,similarity:Belongs to the calycin superfamily. Fatty-acid binding protein (FABP) family.,tissue specificity:Higher expression in adult small intestine and to a much lesser extent in fetal kidney.,
Subcellular Location :	Cytoplasm.
Expression :	Higher expression in adult small intestine and to a much lesser extent in fetal kidney.
Sort :	4538
No4 :	1
Host :	Rabbit
Modifications :	Unmodified

Products Images



Western Blot analysis of K562 cells using CRBP II Polyclonal Antibody. Secondary antibody(catalog#:RS0002) was diluted at 1:20000



Western blot analysis of lysate from K562 cells, using RBP2 Antibody.