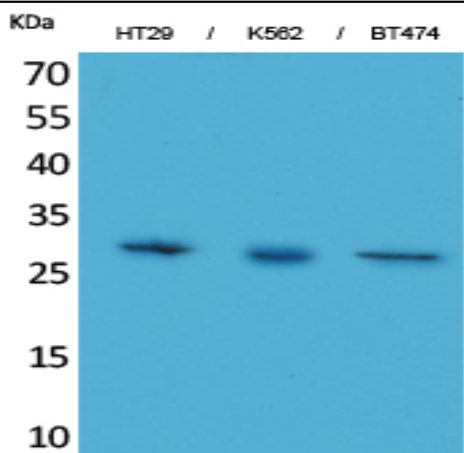


BRMS-1 Polyclonal Antibody

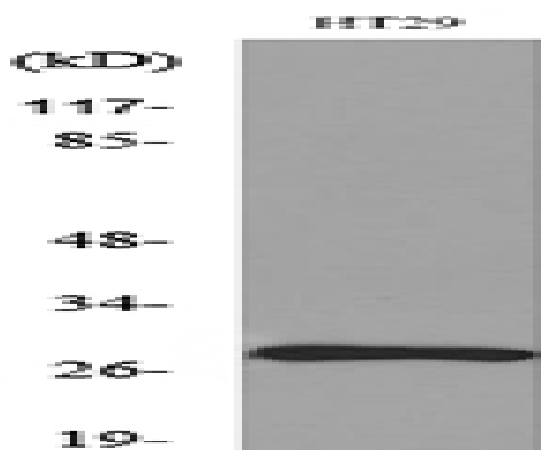
Catalog No :	YT5158
Reactivity :	Human;Mouse;Rat
Applications :	WB;ELISA
Target :	BRMS-1
Gene Name :	BRMS1
Protein Name :	Breast cancer metastasis-suppressor 1
Human Gene Id :	25855
Human Swiss Prot No :	Q9HCU9
Mouse Gene Id :	107392
Mouse Swiss Prot No :	Q99N20
Rat Gene Id :	100911841
Rat Swiss Prot No :	Q5M7T3
Immunogen :	The antiserum was produced against synthesized peptide derived from the C-terminal region of human BRMS1. AA range:197-246
Specificity :	BRMS-1 Polyclonal Antibody detects endogenous levels of BRMS-1 protein.
Formulation :	Liquid in PBS containing 50% glycerol, 0.5% BSA and 0.02% sodium azide.
Source :	Polyclonal, Rabbit,IgG
Dilution :	WB 1:500 - 1:2000. ELISA: 1:20000. Not yet tested in other applications.
Purification :	The antibody was affinity-purified from rabbit antiserum by affinity-chromatography using epitope-specific immunogen.

Concentration :	<u>1 mg/ml</u>
Storage Stability :	<u>-15°C to -25°C/1 year(Do not lower than -25°C)</u>
Observed Band :	<u>28kD</u>
Background :	<u>This gene reduces the metastatic potential, but not the tumorigenicity, of human breast cancer and melanoma cell lines. The protein encoded by this gene localizes primarily to the nucleus and is a component of the mSin3a family of histone deacetylase complexes (HDAC). The protein contains two coiled-coil motifs and several imperfect leucine zipper motifs. Alternative splicing results in two transcript variants encoding different isoforms. [provided by RefSeq, Jul 2008],</u>
Function :	<u>function:May be a mediator of metastasis suppression in breast carcinoma.,similarity:Belongs to the BRMS1 family.,tissue specificity:Expression levels are higher in term placentas than in early placentas. Low levels of expression observed in normal pregnancies and in molar pregnancies.,</u>
Subcellular Location :	<u>Nucleus. Cytoplasm. Predominantly nuclear.</u>
Expression :	<u>Expression levels are higher in term placentas than in early placentas. Low levels of expression observed in normal pregnancies and in molar pregnancies.</u>
Sort :	<u>2870</u>
No4 :	<u>1</u>
Host :	<u>Rabbit</u>
Modifications :	<u>Unmodified</u>

Products Images



Western Blot analysis of HT29, K562, BT474 cells using BRMS-1 Polyclonal Antibody. Secondary antibody(catalog#:RS0002) was diluted at 1:20000



Western blot analysis of lysate from HT29 cells, using BRMS1 Antibody.