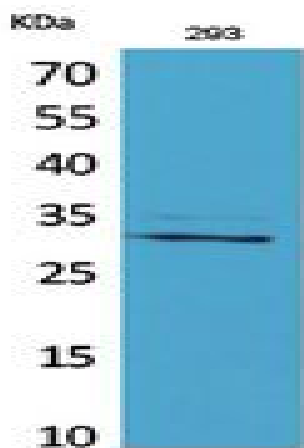


CGREF1 Polyclonal Antibody

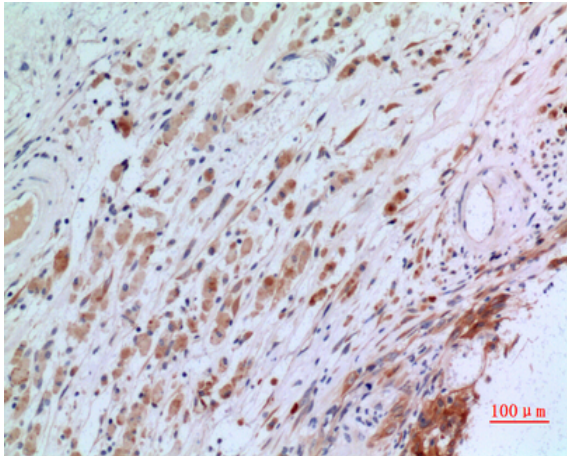
Catalog No :	YT5376
Reactivity :	Human;Rat;Mouse;
Applications :	WB;IHC;IF;ELISA
Target :	CGREF1
Gene Name :	CGREF1
Protein Name :	Cell growth regulator with EF hand domain protein 1
Human Gene Id :	10669
Human Swiss Prot No :	Q99674
Mouse Swiss Prot No :	Q8R1U2
Immunogen :	The antiserum was produced against synthesized peptide derived from the N-terminal region of human CGREF1. AA range:1-50
Specificity :	CGREF1 Polyclonal Antibody detects endogenous levels of CGREF1 protein.
Formulation :	Liquid in PBS containing 50% glycerol, 0.5% BSA and 0.02% sodium azide.
Source :	Polyclonal, Rabbit,IgG
Dilution :	WB 1:500 - 1:2000. IHC: 1:100-1:300. ELISA: 1:20000.. IF 1:50-200
Purification :	The antibody was affinity-purified from rabbit antiserum by affinity-chromatography using epitope-specific immunogen.
Concentration :	1 mg/ml
Storage Stability :	-15°C to -25°C/1 year(Do not lower than -25°C)
Observed Band :	32kD

Background :	caution:The sequence shown here is derived from an Ensembl automatic analysis pipeline and should be considered as preliminary data.,function:Able to inhibit growth in several cell lines.,induction:By p53.,similarity:Contains 2 EF-hand domains.,
Function :	caution:The sequence shown here is derived from an Ensembl automatic analysis pipeline and should be considered as preliminary data.,function:Able to inhibit growth in several cell lines.,induction:By p53.,similarity:Contains 2 EF-hand domains.,
Subcellular Location :	Secreted .
Expression :	Brain,Fetal brain,Testis,Thalamus,
Sort :	3920
No4 :	1
Host :	Rabbit
Modifications :	Unmodified

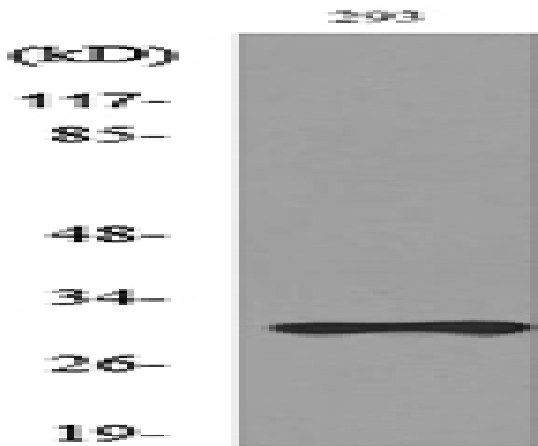
Products Images



Western Blot analysis of 293 cells using CGREF1 Polyclonal Antibody. Secondary antibody(catalog#:RS0002) was diluted at 1:20000



Immunohistochemical analysis of paraffin-embedded human-brain, antibody was diluted at 1:100



Western blot analysis of lysate from 293 cells, using CGREF1 Antibody.