

Sg III Polyclonal Antibody

Catalog No :	YT5142
Reactivity :	Human;Rat
Applications :	WB;IHC;IF;ELISA
Target :	Sg III
Gene Name :	SCG3
Protein Name :	Secretogranin-3
Human Gene Id :	29106
Human Swiss Prot No :	Q8WXD2
Mouse Swiss Prot No :	P47867
Rat Gene Id :	116635
Rat Swiss Prot No :	P47868
Immunogen :	The antiserum was produced against synthesized peptide derived from the N-terminal region of human SCG3. AA range:21-70
Specificity :	Sg III Polyclonal Antibody detects endogenous levels of Sg III protein.
Formulation :	Liquid in PBS containing 50% glycerol, 0.5% BSA and 0.02% sodium azide.
Source :	Polyclonal, Rabbit,IgG
Dilution :	WB 1:500 - 1:2000. IHC: 1:100-300 ELISA: 1:20000.. IF 1:50-200
Purification :	The antibody was affinity-purified from rabbit antiserum by affinity-chromatography using epitope-specific immunogen.
Concentration :	1 mg/ml

Storage Stability : -15°C to -25°C/1 year (Do not lower than -25°C)

Observed Band : 53kD

Background : secretogranin III (SCG3) Homo sapiens The protein encoded by this gene is a member of the chromogranin/secretogranin family of neuroendocrine secretory proteins. Granins may serve as precursors for biologically active peptides. Some granins have been shown to function as helper proteins in sorting and proteolytic processing of prohormones; however, the function of this protein is unknown. Two transcript variants encoding different isoforms have been found for this gene. [provided by RefSeq, Sep 2009],

Function : subcellular location: Neuroendocrine and endocrine secretory granules., tissue specificity: Expressed in brain, heart, kidney, liver and skeletal muscle.,

Subcellular Location : Cytoplasmic vesicle, secretory vesicle . Cytoplasmic vesicle, secretory vesicle membrane ; Peripheral membrane protein . Secreted . Associated with the secretory granule membrane through direct binding to cholesterol-enriched lipid rafts. .

Expression : Expressed in brain, heart, kidney, liver and skeletal muscle.

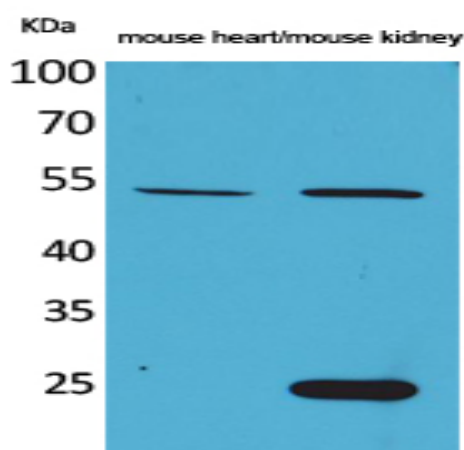
Sort : 16265

No4 : 1

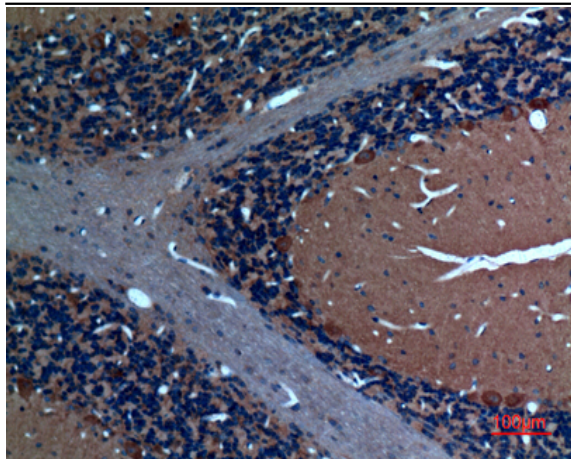
Host : Rabbit

Modifications : Unmodified

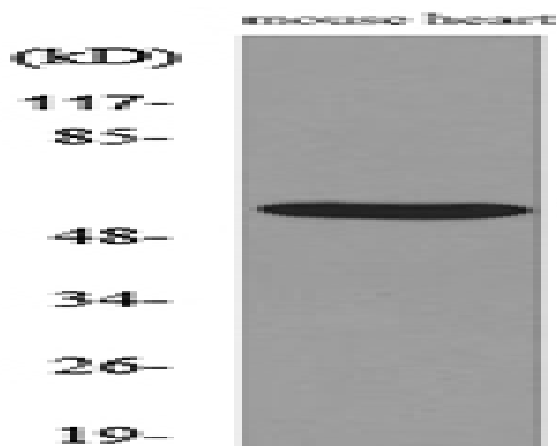
Products Images



Western Blot analysis of mouse heart, mouse kidney cells using Sg III Polyclonal Antibody. Secondary antibody (catalog#: RS0002) was diluted at 1:20000



Immunohistochemical analysis of paraffin-embedded rat-brain, antibody was diluted at 1:100



Western blot analysis of lysate from mouse heart cells, using SCG3 Antibody.