

## MCM7 Polyclonal Antibody

<b>Catalog No :</b>	YT5371
<b>Reactivity :</b>	Human;Mouse;Rat
<b>Applications :</b>	WB;IHC;IF;ELISA
<b>Target :</b>	MCM7
<b>Fields :</b>	>>DNA replication;>>Cell cycle
<b>Gene Name :</b>	MCM7
<b>Protein Name :</b>	DNA replication licensing factor MCM7
<b>Human Gene Id :</b>	4176
<b>Human Swiss Prot No :</b>	P33993
<b>Mouse Gene Id :</b>	17220
<b>Mouse Swiss Prot No :</b>	Q61881
<b>Immunogen :</b>	The antiserum was produced against synthesized peptide derived from the Internal region of human MCM7. AA range:491-540
<b>Specificity :</b>	MCM7 Polyclonal Antibody detects endogenous levels of MCM7 protein.
<b>Formulation :</b>	Liquid in PBS containing 50% glycerol, 0.5% BSA and 0.02% sodium azide.
<b>Source :</b>	Polyclonal, Rabbit,IgG
<b>Dilution :</b>	WB 1:500 - 1:2000. IHC: 1:100-1:300. ELISA: 1:20000.. IF 1:50-200
<b>Purification :</b>	The antibody was affinity-purified from rabbit antiserum by affinity-chromatography using epitope-specific immunogen.
<b>Concentration :</b>	1 mg/ml

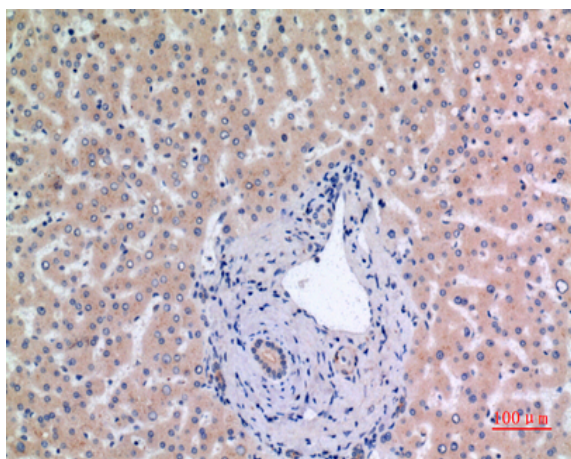
---

<b>Storage Stability :</b>	<u>-15°C to -25°C/1 year(Do not lower than -25°C)</u>
<b>Observed Band :</b>	<u>81kD</u>
<b>Cell Pathway :</b>	<u>DNA replication;Cell_Cycle_G1S;Cell_Cycle_G2M_DNA;</u>
<b>Background :</b>	<u>The protein encoded by this gene is one of the highly conserved mini-chromosome maintenance proteins (MCM) that are essential for the initiation of eukaryotic genome replication. The hexameric protein complex formed by the MCM proteins is a key component of the pre-replication complex (pre_RC) and may be involved in the formation of replication forks and in the recruitment of other DNA replication related proteins. The MCM complex consisting of this protein and MCM2, 4 and 6 proteins possesses DNA helicase activity, and may act as a DNA unwinding enzyme. Cyclin D1-dependent kinase, CDK4, is found to associate with this protein, and may regulate the binding of this protein with the tumorsuppressor protein RB1/RB. Alternatively spliced transcript variants encoding distinct isoforms have been reported. [provided by RefSeq, Jul 2008],</u>
<b>Function :</b>	<u>function:Acts as a factor that allows the DNA to undergo a single round of replication per cell cycle. Required for DNA replication and cell proliferation. Required for S-phase checkpoint activation upon UV-induced damage.,PTM:Phosphorylated upon DNA damage, probably by ATM or ATR.,similarity:Belongs to the MCM family.,similarity:Contains 1 MCM domain.,subunit:Interacts with the ATR-ATRIP complex and with RAD17. Interacts with TIPIN.,</u>
<b>Subcellular Location :</b>	<u>Nucleus . Chromosome . Associated with chromatin before the formation of nuclei and detaches from it as DNA replication progresses. .</u>
<b>Expression :</b>	<u>Brain,Cervix,Chronic myeloid leukemia cell,Lung,</u>
<b>Tag :</b>	<u>orthogonal</u>
<b>Sort :</b>	<u>9469</u>
<b>No4 :</b>	<u>1</u>
<b>Host :</b>	<u>Rabbit</u>
<b>Modifications :</b>	<u>Unmodified</u>

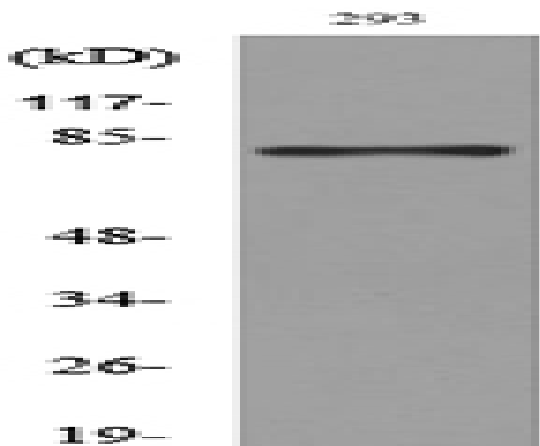
## Products Images



Western Blot analysis of 293 cells using MCM7 Polyclonal Antibody. Secondary antibody(catalog#:RS0002) was diluted at 1:20000



Immunohistochemical analysis of paraffin-embedded human-liver, antibody was diluted at 1:100



Western blot analysis of lysate from 293 cells, using MCM7 Antibody.