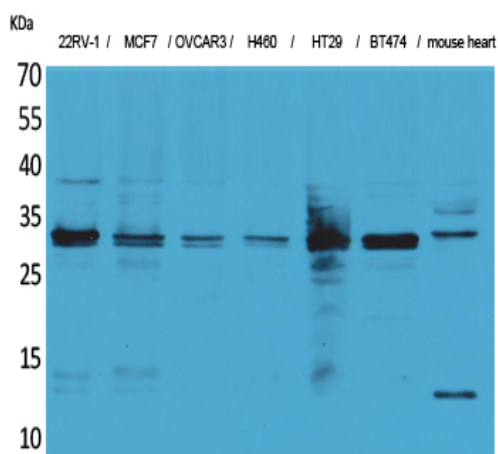


Latexin Polyclonal Antibody

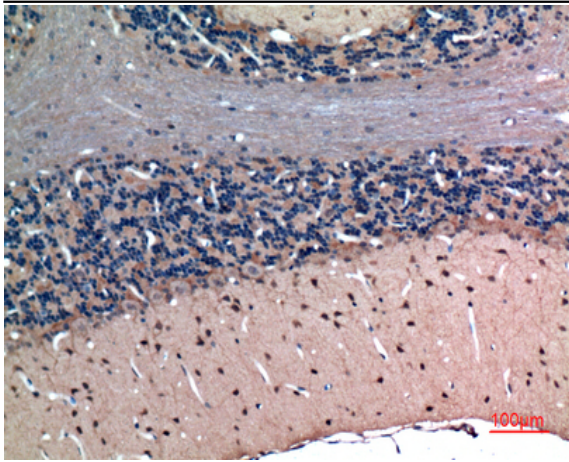
Catalog No :	YT5134
Reactivity :	Human;Mouse;Rat
Applications :	WB;IHC;IF;ELISA
Target :	Latexin
Gene Name :	LXN
Protein Name :	Latexin
Human Gene Id :	56925
Human Swiss Prot No :	Q9BS40
Mouse Gene Id :	17035
Mouse Swiss Prot No :	P70202
Rat Gene Id :	59073
Rat Swiss Prot No :	Q64361
Immunogen :	Synthesized peptide derived from Latexin . at AA range: 90-170
Specificity :	Latexin Polyclonal Antibody detects endogenous levels of Latexin protein.
Formulation :	Liquid in PBS containing 50% glycerol, 0.5% BSA and 0.02% sodium azide.
Source :	Polyclonal, Rabbit,IgG
Dilution :	WB 1:500 - 1:2000. IHC: 1:100-300 ELISA: 1:20000.. IF 1:50-200
Purification :	The antibody was affinity-purified from rabbit antiserum by affinity-chromatography using epitope-specific immunogen.

Concentration :	1 mg/ml
Storage Stability :	-15°C to -25°C/1 year(Do not lower than -25°C)
Observed Band :	25kD
Background :	This gene encodes the only known protein inhibitor of zinc-dependent metalloproteinases. [provided by RefSeq, Oct 2008],
Function :	function:Hardly reversible, non-competitive, and potent inhibitor of CPA1, CPA2 and CPA4.,similarity:Belongs to the protease inhibitor I47 (latexin) family.,tissue specificity:Highly expressed in heart, prostate, ovary, kidney, pancreas, and colon, moderate or low in other tissues including brain.,
Subcellular Location :	Cytoplasm .
Expression :	Highly expressed in heart, prostate, ovary, kidney, pancreas, and colon, moderate or low in other tissues including brain.
Sort :	9130
No4 :	1
Host :	Rabbit
Modifications :	Unmodified

Products Images



Western Blot analysis of 22RV-1, MCF7, OVCAR3, H460, HT29, BT474, mouse heart cells using Latexin Polyclonal Antibody. Secondary antibody(catalog#:RS0002) was diluted at 1:20000



Immunohistochemical analysis of paraffin-embedded rat-brain,
antibody was diluted at 1:100