

Angptl1 Polyclonal Antibody

Catalog No :	YT5364
Reactivity :	Human;Mouse;Rat
Applications :	WB;IHC;IF;ELISA
Target :	Angptl1
Gene Name :	ANGPTL1
Protein Name :	Angiopoietin-related protein 1
Human Gene Id :	9068
Human Swiss Prot No :	O95841
Mouse Gene Id :	72713
Mouse Swiss Prot No :	Q640P2
Immunogen :	The antiserum was produced against synthesized peptide derived from the Internal region of human ANGPTL1. AA range:11-60
Specificity :	Angptl1 Polyclonal Antibody detects endogenous levels of Angptl1 protein.
Formulation :	Liquid in PBS containing 50% glycerol, 0.5% BSA and 0.02% sodium azide.
Source :	Polyclonal, Rabbit,IgG
Dilution :	WB 1:500 - 1:2000. IHC: 1:100-1:300. ELISA: 1:20000.. IF 1:50-200
Purification :	The antibody was affinity-purified from rabbit antiserum by affinity-chromatography using epitope-specific immunogen.
Concentration :	1 mg/ml
Storage Stability :	-15°C to -25°C/1 year(Do not lower than -25°C)

Observed Band : 57kD

Background :

Angiopoietins are members of the vascular endothelial growth factor family and the only known growth factors largely specific for vascular endothelium. Angiopoietin-1, angiopoietin-2, and angiopoietin-4 participate in the formation of blood vessels. The protein encoded by this gene is another member of the angiopoietin family that is widely expressed in adult tissues with mRNA levels highest in highly vascularized tissues. This protein was found to be a secretory protein that does not act as an endothelial cell mitogen in vitro. [provided by RefSeq, Jul 2008],

Function :

similarity:Contains 1 fibrinogen C-terminal domain.,tissue specificity:Highly expressed in adrenal gland, placenta, thyroid gland, heart, skeletal muscle and small intestine. Weakly expressed in testis, ovary, colon, pancreas, kidney and stomach.,

Subcellular Location : Secreted .

Expression :

Highly expressed in adrenal gland, placenta, thyroid gland, heart, skeletal muscle and small intestine. Weakly expressed in testis, ovary, colon, pancreas, kidney and stomach.

Tag : hot

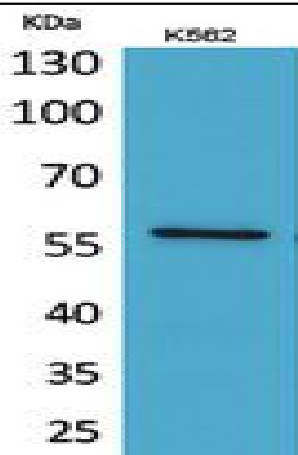
Sort : 2026

No4 : 1

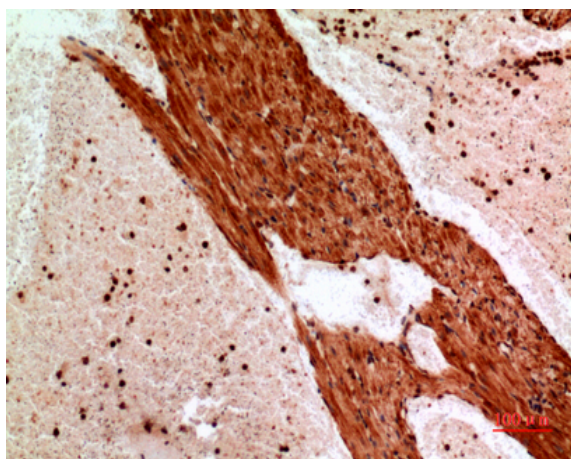
Host : Rabbit

Modifications : Unmodified

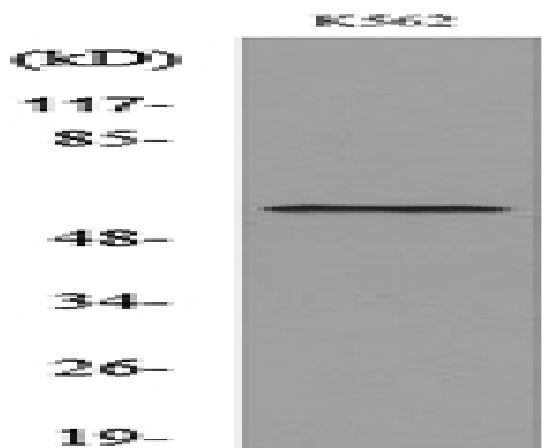
Products Images



Western Blot analysis of K562 cells using Angptl1 Polyclonal Antibody. Secondary antibody(catalog#:RS0002) was diluted at 1:20000



Immunohistochemical analysis of paraffin-embedded mouse-heart, antibody was diluted at 1:100



Western blot analysis of lysate from K562 cells, using ANGPTL1 Antibody.