

DPP7 Polyclonal Antibody

Catalog No :	YT5125
Reactivity :	Human;Rat;Mouse;
Applications :	WB;IHC;IF;ELISA
Target :	DPP7
Gene Name :	DPP7
Protein Name :	Dipeptidyl peptidase 2
Human Gene Id :	29952
Human Swiss Prot No :	Q9UHL4
Mouse Swiss Prot No :	Q9ET22
Immunogen :	Synthesized peptide derived from the C-terminal region of human DPP7.
Specificity :	DPP7 Polyclonal Antibody detects endogenous levels of DPP7 protein.
Formulation :	Liquid in PBS containing 50% glycerol, 0.5% BSA and 0.02% sodium azide.
Source :	Polyclonal, Rabbit,IgG
Dilution :	WB 1:500 - 1:2000. IHC: 1:100-300 ELISA: 1:20000.. IF 1:50-200
Purification :	The antibody was affinity-purified from rabbit antiserum by affinity-chromatography using epitope-specific immunogen.
Concentration :	1 mg/ml
Storage Stability :	-15°C to -25°C/1 year(Do not lower than -25°C)
Observed Band :	54kD

Background : The protein encoded by this gene is a post-proline cleaving aminopeptidase expressed in quiescent lymphocytes. The resting lymphocytes are maintained through suppression of apoptosis, a state which is disrupted by inhibition of this novel serine protease. The enzyme has strong sequence homology with prolylcarboxypeptidase and is active at both acidic and neutral pH. [provided by RefSeq, Jul 2008],

Function : catalytic activity:Release of an N-terminal dipeptide, Xaa-Yaa-|-, preferentially when Yaa is Ala or Pro. Substrates are oligopeptides, preferentially tripeptides.,function:Plays an important role in the degradation of some oligopeptides.,PTM:N-glycosylated.,similarity:Belongs to the peptidase S28 family.,subunit:Homodimer.,

Subcellular Location : Lysosome . Cytoplasmic vesicle . Secreted .

Expression : Detected in seminal plasma (at protein level).

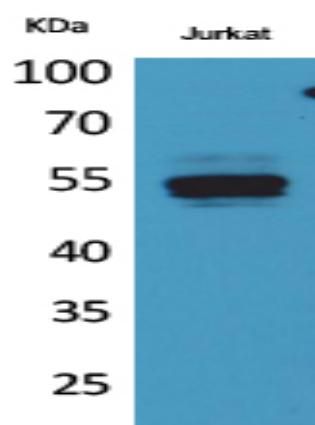
Sort : 5243

No4 : 1

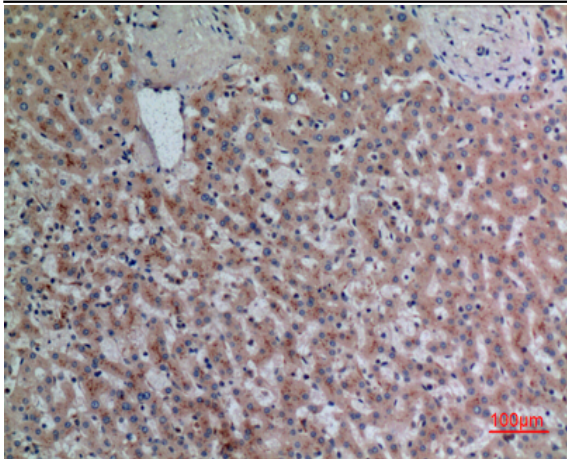
Host : Rabbit

Modifications : Unmodified

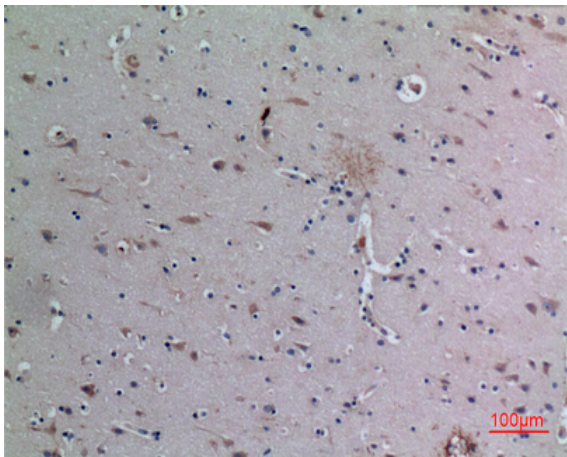
Products Images



Western Blot analysis of Jurkat cells using DPP7 Polyclonal Antibody. Secondary antibody(catalog#:RS0002) was diluted at 1:20000



Immunohistochemical analysis of paraffin-embedded human-liver, antibody was diluted at 1:100



Immunohistochemical analysis of paraffin-embedded human-brain, antibody was diluted at 1:100