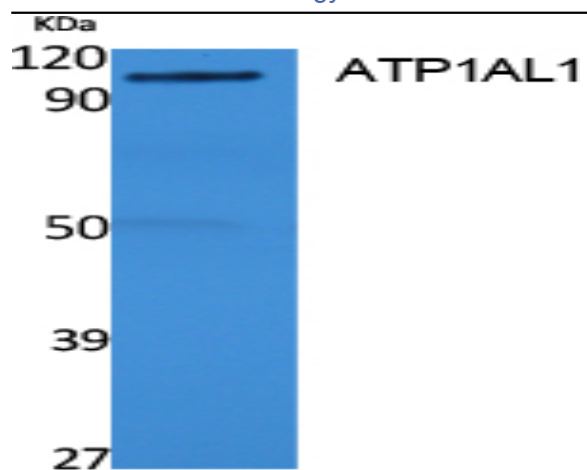


ATP1AL1 Polyclonal Antibody

Catalog No :	YT5099
Reactivity :	Human;Rat
Applications :	WB;ELISA
Target :	ATP1AL1
Fields :	>>Oxidative phosphorylation;>>Metabolic pathways
Gene Name :	ATP12A
Protein Name :	Potassium-transporting ATPase alpha chain 2
Human Gene Id :	479
Human Swiss Prot No :	P54707
Mouse Swiss Prot No :	Q9Z1W8
Rat Swiss Prot No :	P54708
Immunogen :	Synthesized peptide derived from ATP1AL1 . at AA range: 380-460
Specificity :	ATP1AL1 Polyclonal Antibody detects endogenous levels of ATP1AL1 protein.
Formulation :	Liquid in PBS containing 50% glycerol, 0.5% BSA and 0.02% sodium azide.
Source :	Polyclonal, Rabbit,IgG
Dilution :	WB 1:500 - 1:2000. ELISA: 1:20000. Not yet tested in other applications.
Purification :	The antibody was affinity-purified from rabbit antiserum by affinity-chromatography using epitope-specific immunogen.
Concentration :	1 mg/ml

Storage Stability :	<u>-15°C to -25°C/1 year(Do not lower than -25°C)</u>
Observed Band :	<u>115kD</u>
Cell Pathway :	<u>Oxidative phosphorylation;</u>
Background :	<u>The protein encoded by this gene belongs to the family of P-type cation transport ATPases. This gene encodes a catalytic subunit of the ouabain-sensitive H⁺/K⁺-ATPase that catalyzes the hydrolysis of ATP coupled with the exchange of H⁽⁺⁾ and K⁽⁺⁾ ions across the plasma membrane. It is also responsible for potassium absorption in various tissues. Two transcript variants encoding different isoforms have been found for this gene. [provided by RefSeq, Jun 2010],</u>
Function :	<u>catalytic activity:ATP + H₂O + H⁽⁺⁾(In) + K⁽⁺⁾(Out) = ADP + phosphate + H⁽⁺⁾(Out) + K⁽⁺⁾(In).,function:Catalyzes the hydrolysis of ATP coupled with the exchange of H⁽⁺⁾ and K⁽⁺⁾ ions across the plasma membrane. Responsible for potassium absorption in various tissues.,similarity:Belongs to the cation transport ATPase (P-type) family. Type IIC subfamily.,subunit:Composed of two subunits: alpha (catalytic) and beta.,tissue specificity:Found in skin and kidney.,</u>
Subcellular Location :	<u>Apical cell membrane ; Multi-pass membrane protein .</u>
Expression :	<u>Expressed in airway epithelial cells (at protein level) (PubMed:29391451). Found in skin and kidney. Detected in prostate basal cells (at protein level). Expression is increased in benign prostate hyperplasia and tumor tissues (at protein level).</u>
Sort :	<u>2423</u>
No4 :	<u>1</u>
Host :	<u>Rabbit</u>
Modifications :	<u>Unmodified</u>

Products Images



Western Blot analysis of extracts from rat stomach, using ATP1AL1 Polyclonal Antibody. Secondary antibody(catalog#:RS0002) was diluted at 1:20000