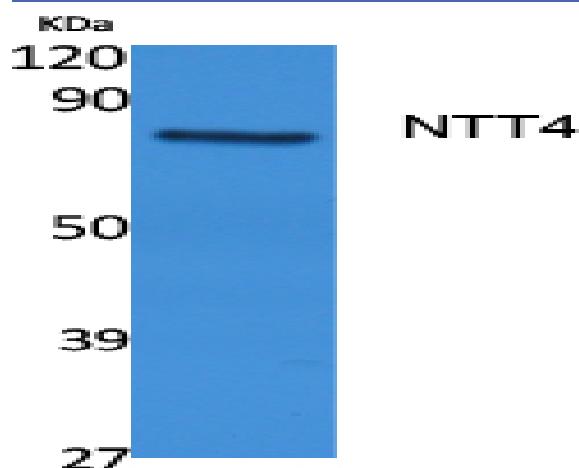


NTT4 Polyclonal Antibody

| | |
|------------------------------|---|
| Catalog No : | YT5097 |
| Reactivity : | Human;Mouse;Rat |
| Applications : | WB;ELISA |
| Target : | NTT4 |
| Gene Name : | SLC6A17 |
| Protein Name : | Sodium-dependent neutral amino acid transporter SLC6A17 |
| Human Gene Id : | 388662 |
| Human Swiss Prot No : | Q9H1V8 |
| Mouse Gene Id : | 229706 |
| Mouse Swiss Prot No : | Q8BJI1 |
| Rat Gene Id : | 613226 |
| Rat Swiss Prot No : | P31662 |
| Immunogen : | Synthesized peptide derived from NTT4 . at AA range: 240-320 |
| Specificity : | NTT4 Polyclonal Antibody detects endogenous levels of NTT4 protein. |
| Formulation : | Liquid in PBS containing 50% glycerol, 0.5% BSA and 0.02% sodium azide. |
| Source : | Polyclonal, Rabbit,IgG |
| Dilution : | WB 1:500 - 1:2000. ELISA: 1:5000. Not yet tested in other applications. |
| Purification : | The antibody was affinity-purified from rabbit antiserum by affinity-chromatography using epitope-specific immunogen. |

| | |
|-------------------------------|--|
| Concentration : | 1 mg/ml |
| Storage Stability : | -15°C to -25°C/1 year(Do not lower than -25°C) |
| Observed Band : | 81kD |
| Background : | The SLC6 family of proteins, which includes SLC6A17, acts as specific transporters for neurotransmitters, amino acids, and osmolytes like betaine, taurine, and creatine. SLC6 proteins are sodium cotransporters that derive the energy for solute transport from the electrochemical gradient for sodium ions (Hoglund et al., 2005 [PubMed 16125675]).[supplied by OMIM, Mar 2008], |
| Function : | function:Not yet known, orphan transporter.,similarity:Belongs to the sodium:neurotransmitter symporter (SNF) family., |
| Subcellular Location : | Cytoplasmic vesicle, secretory vesicle, synaptic vesicle membrane ; Multi-pass membrane protein . Cell junction, synapse, postsynapse . Cell junction, synapse, presynapse . Localizes at synaptic junctions - at both pre- and post-synaptic sites - particularly in excitatory glutamatergic terminals. . |
| Expression : | Hippocampus, |
| Sort : | 10986 |
| No4 : | 1 |
| Host : | Rabbit |
| Modifications : | Unmodified |

Products Images



Western Blot analysis of extracts from rat stomach, using NTT4 Polyclonal Antibody. Secondary antibody(catalog#:RS0002) was diluted at 1:20000