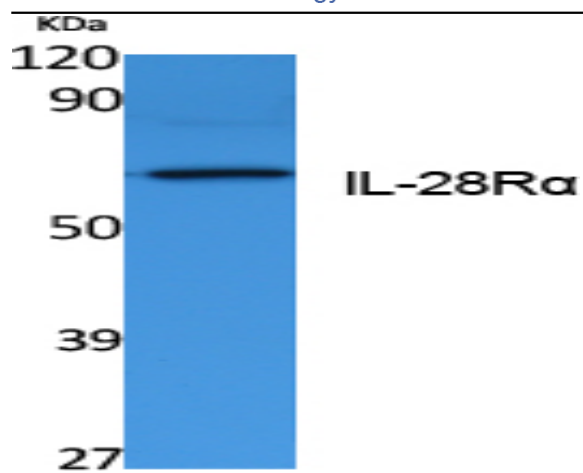


IL-28R α Polyclonal Antibody

Catalog No :	YT5089
Reactivity :	Human;Mouse
Applications :	WB;ELISA
Target :	IL-28R α
Fields :	>>Cytokine-cytokine receptor interaction;>>JAK-STAT signaling pathway
Gene Name :	IL28RA
Protein Name :	Interleukin-28 receptor subunit alpha
Human Gene Id :	163702
Human Swiss Prot No :	Q8IU57
Mouse Swiss Prot No :	Q8CGK5
Immunogen :	Synthesized peptide derived from the Internal region of human IL-28R α .
Specificity :	IL-28R α Polyclonal Antibody detects endogenous levels of IL-28R α protein.
Formulation :	Liquid in PBS containing 50% glycerol, 0.5% BSA and 0.02% sodium azide.
Source :	Polyclonal, Rabbit,IgG
Dilution :	WB 1:500 - 1:2000. ELISA: 1:40000. Not yet tested in other applications.
Purification :	The antibody was affinity-purified from rabbit antiserum by affinity-chromatography using epitope-specific immunogen.
Concentration :	1 mg/ml
Storage Stability :	-15°C to -25°C/1 year(Do not lower than -25°C)

Observed Band :	57kD
Cell Pathway :	Cytokine-cytokine receptor interaction;Jak_STAT;
Background :	<p>The protein encoded by this gene belongs to the class II cytokine receptor family. This protein forms a receptor complex with interleukine 10 receptor, beta (IL10RB). The receptor complex has been shown to interact with three closely related cytokines, including interleukin 28A (IL28A), interleukin 28B (IL28B), and interleukin 29 (IL29). The expression of all three cytokines can be induced by viral infection. The cells overexpressing this protein have been found to have enhanced responses to IL28A and IL29, but decreased response to IL28B. Three alternatively spliced transcript variants encoding distinct isoforms have been reported. [provided by RefSeq, Jul 2008],</p>
Function :	<p>function:The IL28RA/IL10RB dimer is a receptor for IL28A, IL28B and IL29. The ligand/receptor complex seems to signal through the Jak-STAT pathway.,similarity:Belongs to the type II cytokine receptor family.,similarity:Contains 1 fibronectin type-III domain.,subunit:Heterodimer with IL10RB.,tissue specificity:Widely expressed.,</p>
Subcellular Location :	Membrane ; Single-pass type I membrane protein .
Expression :	Widely expressed.
Sort :	8489
No4 :	1
Host :	Rabbit
Modifications :	Unmodified

Products Images



Western Blot analysis of extracts from K562 cells, using IL-28Rα Polyclonal Antibody. Secondary antibody(catalog#:RS0002) was diluted at 1:20000