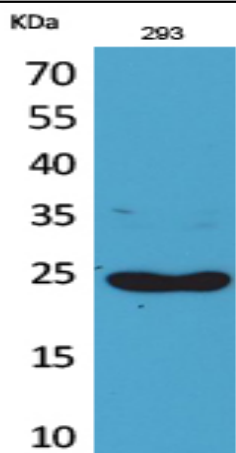


Lymphotactin Polyclonal Antibody

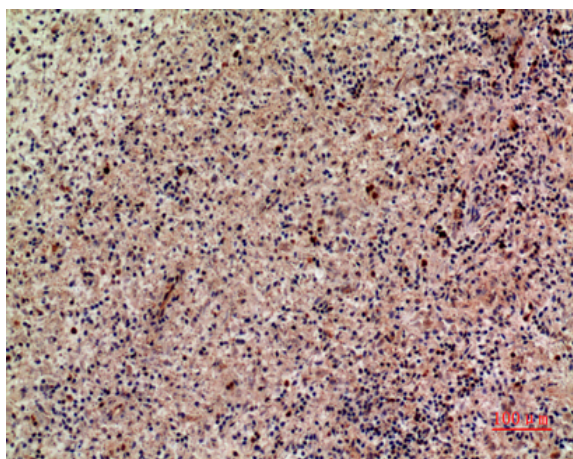
Catalog No :	YT5307
Reactivity :	Human;Rat;Mouse;
Applications :	WB;IHC;IF;ELISA
Target :	Lymphotactin
Fields :	>>Cytokine-cytokine receptor interaction;>>Viral protein interaction with cytokine and cytokine receptor;>>Chemokine signaling pathway
Gene Name :	XCL1/XCL2
Protein Name :	Lymphotactin/Cytokine SCM-1 beta
Human Gene Id :	6375
Human Swiss Prot No :	P47992
Mouse Swiss Prot No :	P47993
Immunogen :	The antiserum was produced against synthesized peptide derived from the Internal region of human XCL1/XCL2. AA range:51-100
Specificity :	Lymphotactin Polyclonal Antibody detects endogenous levels of Lymphotactin protein.
Formulation :	Liquid in PBS containing 50% glycerol, 0.5% BSA and 0.02% sodium azide.
Source :	Polyclonal, Rabbit,IgG
Dilution :	WB 1:500 - 1:2000. IHC: 1:100-1:300. ELISA: 1:20000.. IF 1:50-200
Purification :	The antibody was affinity-purified from rabbit antiserum by affinity-chromatography using epitope-specific immunogen.
Concentration :	1 mg/ml

Storage Stability :	<u>-15°C to -25°C/1 year(Do not lower than -25°C)</u>
Observed Band :	<u>25kD</u>
Cell Pathway :	<u>Cytokine-cytokine receptor interaction;Chemokine;</u>
Background :	<u>This antimicrobial gene encodes a member of the chemokine superfamily. Chemokines function in inflammatory and immunological responses, inducing leukocyte migration and activation. The encoded protein is a member of the C-chemokine subfamily, retaining only two of four cysteines conserved in other chemokines, and is thought to be specifically chemotactic for T cells. This gene and a closely related family member are located on the long arm of chromosome 1. [provided by RefSeq, Sep 2014],</u>
Function :	<u>function:Chemotactic activity for lymphocytes but not for monocytes or neutrophils.,online information:XCL1 entry,similarity:Belongs to the intercrine gamma family.,tissue specificity:Highest level in spleen, lower in peripheral leukocytes and very low levels in lung, colon and small intestine.,</u>
Subcellular Location :	<u>Secreted.</u>
Expression :	<u>Highest level in spleen, lower in peripheral leukocytes and very low levels in lung, colon and small intestine.</u>
Sort :	<u>9301</u>
No4 :	<u>1</u>
Host :	<u>Rabbit</u>
Modifications :	<u>Unmodified</u>

Products Images



Western Blot analysis of 293 cells using Lymphotactin Polyclonal Antibody. Secondary antibody(catalog#:RS0002) was diluted at 1:20000



Immunohistochemical analysis of paraffin-embedded human-liver, antibody was diluted at 1:100