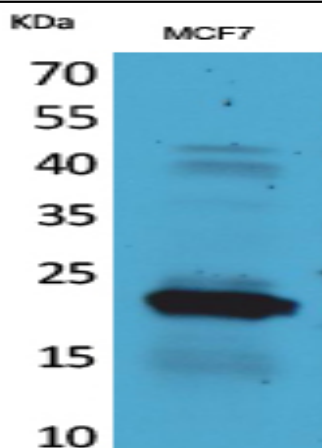


IL-28 Polyclonal Antibody

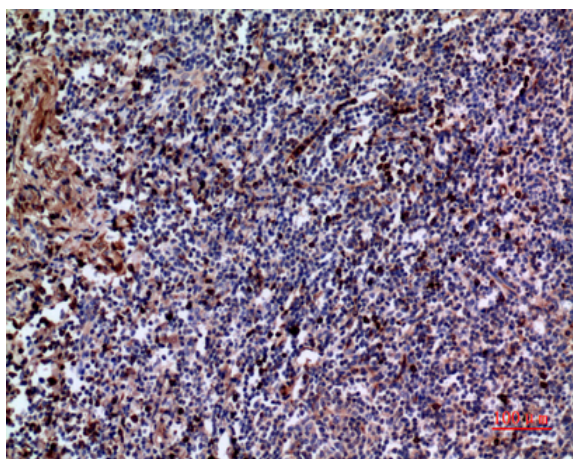
Catalog No :	YT5305
Reactivity :	Human;Rat;Mouse;
Applications :	WB;IHC;IF;ELISA
Target :	IL-28
Fields :	>>Cytokine-cytokine receptor interaction;>>JAK-STAT signaling pathway
Gene Name :	IL28A
Protein Name :	Interleukin-28A
Human Gene Id :	282616
Human Swiss Prot No :	Q8IZJ0
Mouse Gene Id :	330496
Mouse Swiss Prot No :	Q4VK74
Immunogen :	The antiserum was produced against synthesized peptide derived from the C-terminal region of human IL28A. AA range:131-180
Specificity :	IL-28 Polyclonal Antibody detects endogenous levels of IL-28 protein.
Formulation :	Liquid in PBS containing 50% glycerol, 0.5% BSA and 0.02% sodium azide.
Source :	Polyclonal, Rabbit,IgG
Dilution :	WB 1:500 - 1:2000. IHC: 1:100-1:300. ELISA: 1:20000.. IF 1:50-200
Purification :	The antibody was affinity-purified from rabbit antiserum by affinity-chromatography using epitope-specific immunogen.
Concentration :	1 mg/ml

Storage Stability :	<u>-15°C to -25°C/1 year(Do not lower than -25°C)</u>
Observed Band :	<u>25kD</u>
Cell Pathway :	<u>Cytokine-cytokine receptor interaction;Jak_STAT;</u>
Background :	<p>This gene encodes a cytokine distantly related to type I interferons and the IL-10 family. This gene, interleukin 28B (IL28B), and interleukin 29 (IL29) are three closely related cytokine genes that form a cytokine gene cluster on a chromosomal region mapped to 19q13. Expression of the cytokines encoded by the three genes can be induced by viral infection. All three cytokines have been shown to interact with a heterodimeric class II cytokine receptor that consists of interleukin 10 receptor, beta (IL10RB) and interleukin 28 receptor, alpha (IL28RA). [provided by RefSeq, Jul 2008],</p>
Function :	<p>caution:It is uncertain whether Met-1 or Met-5 is the initiator.,function:Cytokine with immunomodulatory activity. Up-regulates MHC class I antigen expression. Displays potent antiviral activity. Also displays antitumor activity. Ligand for the heterodimeric class II cytokine receptor composed of IL10RB and IL28RA. The ligand/receptor complex seems to signal through the Jak-STAT pathway.,induction:By viral infections or double stranded RNA.,online information:Interleukin-28 entry,similarity:Belongs to the IL-28/IL-29 family.,</p>
Subcellular Location :	<u>Secreted .</u>
Expression :	<u>Pooled,</u>
Sort :	<u>8488</u>
No4 :	<u>1</u>
Host :	<u>Rabbit</u>
Modifications :	<u>Unmodified</u>

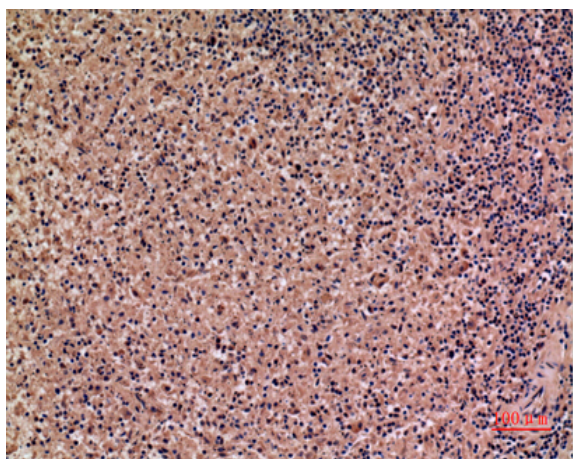
Products Images



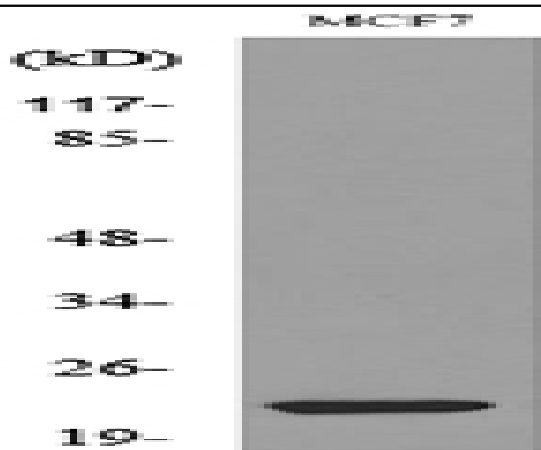
Western Blot analysis of MCF7 cells using IL-28 Polyclonal Antibody. Secondary antibody(catalog#:RS0002) was diluted at 1:20000



Immunohistochemical analysis of paraffin-embedded human-tonsil, antibody was diluted at 1:100



Immunohistochemical analysis of paraffin-embedded human-spleen, antibody was diluted at 1:100



Western blot analysis of lysate from MCF7 cells, using IL28A Antibody.