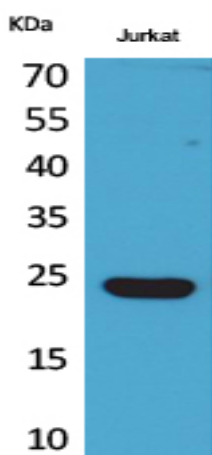


## IFN- $\epsilon$ Polyclonal Antibody

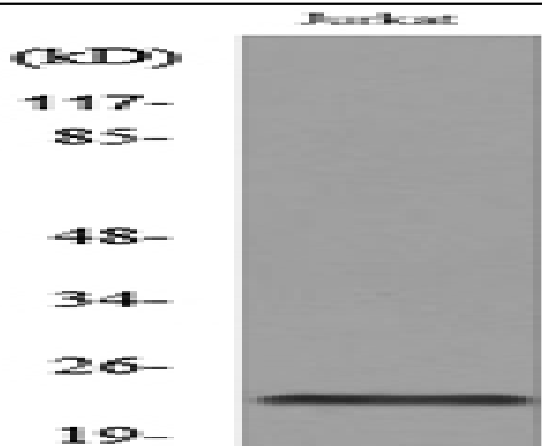
<b>Catalog No :</b>	YT5304
<b>Reactivity :</b>	Human;Mouse
<b>Applications :</b>	WB;ELISA
<b>Target :</b>	IFN- $\epsilon$
<b>Fields :</b>	>>Cytokine-cytokine receptor interaction;>>RIG-I-like receptor signaling pathway;>>JAK-STAT signaling pathway
<b>Gene Name :</b>	IFNE
<b>Protein Name :</b>	Interferon epsilon
<b>Human Gene Id :</b>	338376
<b>Human Swiss Prot No :</b>	Q86WN2
<b>Mouse Gene Id :</b>	230405
<b>Mouse Swiss Prot No :</b>	Q80ZF2
<b>Immunogen :</b>	The antiserum was produced against synthesized peptide derived from the C-terminal region of human IFNE. AA range:159-208
<b>Specificity :</b>	IFN- $\epsilon$ Polyclonal Antibody detects endogenous levels of IFN- $\epsilon$ protein.
<b>Formulation :</b>	Liquid in PBS containing 50% glycerol, 0.5% BSA and 0.02% sodium azide.
<b>Source :</b>	Polyclonal, Rabbit,IgG
<b>Dilution :</b>	WB 1:500 - 1:2000. ELISA: 1:20000. Not yet tested in other applications.
<b>Purification :</b>	The antibody was affinity-purified from rabbit antiserum by affinity-chromatography using epitope-specific immunogen.
<b>Concentration :</b>	1 mg/ml

<b>Storage Stability :</b>	<u>-15°C to -25°C/1 year(Do not lower than -25°C)</u>
<b>Observed Band :</b>	<u>24kD</u>
<b>Cell Pathway :</b>	<u>Cytokine-cytokine receptor interaction;RIG-I-like receptor;Jak_STAT;</u>
<b>Background :</b>	<u>similarity:Belongs to the alpha/beta interferon family.,tissue specificity:Expressed in prostate cancer cell line PC-3, amnion-derived WISH cells, SK-MEL28 melanoma cells and Daudi cells and very weakly in MCF-7 human breast cancer cells. Not detected in Namalwa cells (Burkitt's lymphoma) or in Jurkat (T) cells.,</u>
<b>Function :</b>	<u>similarity:Belongs to the alpha/beta interferon family.,tissue specificity:Expressed in prostate cancer cell line PC-3, amnion-derived WISH cells, SK-MEL28 melanoma cells and Daudi cells and very weakly in MCF-7 human breast cancer cells. Not detected in Namalwa cells (Burkitt's lymphoma) or in Jurkat (T) cells.,</u>
<b>Subcellular Location :</b>	<u>Secreted .</u>
<b>Expression :</b>	<u>Endometrium-specific.</u>
<b>Sort :</b>	<u>8333</u>
<b>No4 :</b>	<u>1</u>
<b>Host :</b>	<u>Rabbit</u>
<b>Modifications :</b>	<u>Unmodified</u>

## Products Images



Western Blot analysis of Jurkat cells using IFN- $\epsilon$  Polyclonal Antibody. Secondary antibody(catalog#:RS0002) was diluted at 1:20000



Western blot analysis of lysate from Jurkat cells, using IFNE Antibody.